

Self-propelled sprayer

User manual v0.1

(Original user manual)

XENON PRO



▶ GET THE POWER - BE EFFICIENT ◀

Foreword

Thank you for choosing a MATROT Xénon self-propelled sprayer. We are proud of the confidence you place in us.

Please read this user manual and the maintenance log carefully. These two documents contain all the information you need to use, adjust and maintain your self-propelled machine.

Field of application

Reserved for professional use, this machine is designed exclusively for the application of phytosanitary products (fungicides, herbicides and insecticides) and liquid nitrogen fertiliser in the fields. It must only be used for its intended purpose. Any other use is considered as contrary to normal use of the machine and is therefore prohibited.

General safety instructions



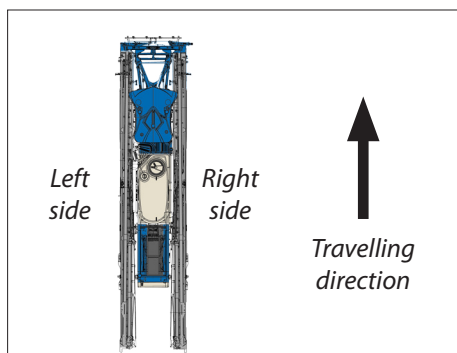
This machine must be used in compliance with the safety instructions included in the user manual. Negligence or error by the user could result in serious injury.

Failure to respect these instructions may cause serious and possibly fatal bodily injury.

OWNER'S LIABILITY: This machine may only be used by persons who have read, understand and respect the warnings and instructions included in this user manual.

- 1** The MATROT Xénon self-propelled sprayer must be used by personnel trained in its handling and use, and in the use of the treatments or fertilisers used with it.
- 2** Before using the equipment, the operator must read, understand and integrate all of the instructions and danger warnings included in this manual. This manual aims to indicate situations which could cause serious damage and the necessary precautions to avoid these situations. Keep the manual at hand for easy reference. A storage drawer under the seat is provided for this purpose.
- 3** When handling products or using equipment, the operator must always wear personal protection equipment to limit the risks inherent to contact with and/or inhaling toxic products, gases, vapours, mist and dust possibly created by the sprayer. The operator must comply with the recommendations of the manufacturer of the treatment product.
- 4** Get to know the commands and how they operate before using them. You must know how to stop the commands and the machine quickly.
- 5** Only responsible adults fully aware of how the machine operates must be allowed to use it.
- 6** Do not allow anyone other than the operator to stand on the machine.
- 7** When using hydraulic or electric commands, etc., make sure that no-one lies within the sprayer radius of action. Disengage the machine commands if someone approaches.
- 8** Never wear loose clothing when working on the machine, since it could be caught by moving parts.
- 9** Never place the hands or feet near a moving part. Risk of serious, possibly irreversible, bodily injury.

- 10** Always show good sense and anticipate in any situations not described in this user manual.
- 11** The MATROT Xénon self-propelled sprayer must be inspected and maintained in strict compliance with the inspection and maintenance schedule defined in this manual.
- 12** The machine must only be maintained and repaired by personnel familiar with its special characteristics.
- 13** Some of the illustrations in this manual may show parts of the MATROT Xénon self-propelled sprayer without casing, grille or guard for simplification and/or visibility purposes. The MATROT Xénon self-propelled sprayer must never be used without these guards.
- 14** The MATROT Xénon self-propelled sprayer is homologated for road use and ensures optimum safety for the user. The user must nevertheless know and respect applicable regulations concerning:
 - safety at work (see Labour Code)
 - public highway traffic regulations.
- 15** The left side is the side on the left of the user when the machine is travelling in the normal direction forwards.
The right side is the side on the right of the user when the machine is travelling in the normal direction forwards



Starting the machine

- 16** Press the horn several times to provide a warning that the machine is about to be started.
- 16** Never run the engine in a closed area without appropriate ventilation. Exhaust gases are toxic and may cause asphyxiation.

Driving on the road

- 17** Adapt the machine speed to road and traffic conditions.
- 18** When going downhill, reduce the engine speed or the machine speed, using the joystick.
- 19** Check the condition of the road lights and rotating beacons before going on the public highway.
- 20** Whenever possible, avoid using the work floodlights on the road, since they could dazzle the other road users.

Using the machine

- 21 Before using the machine, make sure that all safety components are in position.
- 22 **Never** leave the driver's seat when the machine is moving.
- 23 Before leaving the driver's seat, apply the parking brake, switch off the engine and remove the ignition keys.
- 24 Before working on the machine components, **YOU MUST**:
 - apply the parking brake;
 - switch off the engine;
 - remove the ignition keys.
- 25 Make the settings and a spraying test with water before preparing the mixture.
- 25 When working on sloping ground:
 - Be vigilant and careful
 - Adapt your speed to the ground conditions, especially when turning
 - Avoid changing direction suddenly
 - Do not brake or accelerate sharply when going up or down a slope
- 25 Respect all installation, operation, adjustment, maintenance and repair instructions included in this manual.

Environment

- 26 As stipulated in directive 2009/128/EC, the MATROT Xénon self-propelled sprayer is subject to periodic inspections by an approved organisation.

The first inspection must be carried out 5 years after the sprayer is first registered (invoice date). The validity duration is then 5 years from the date of the report certifying correct operation of the sprayer.

Recommendations to users of treatment products

This sprayer was designed and manufactured by our company to operate using the treatment products you select. To ensure the sprayer operates correctly, please strictly comply with the recommendations included in the user manual you received when you purchased the sprayer.

However, as the user, you are solely responsible for strictly applying the recommendations given by the manufacturers of the treatment products you are using.

In particular, all users are strongly recommended to:

- Carefully read the label(s) on the treatment product(s) and respect the indications mentioned (proportions, personal protection equipment, etc.);
- Only mix products expressly recognised as compatible by the manufacturer of the phytosanitary products;
- Avoid incorporating air when filling the sprayer tank, to avoid the formation of foam and possible overflowing;
- Respect the precautions for use and the warnings indicated by the manufacturer of the phytosanitary product concerning storage of treatment products. If possible, products should always be stored in locked rooms out of the reach of children and animals;
- Respect the precautions concerning recycling of packaging, in compliance with the recommendations provided by the manufacturers of phytosanitary products;
- Respect non-treated areas;
- Contact the manufacturer of the phytosanitary product (or its representative) in case of doubt or missing information.

Warranty

The proper operation of the equipment is only guaranteed if original MATROT ÉQUIPEMENTS spare parts are used.

The contractual warranty will not cover modified equipment or equipment used in a manner which fails to comply with the technical recommendations included in this manual or equipment used in a negligent manner or not maintained on a regular basis.

Your machine and its accessories (mechanical, electric, hydraulic, pneumatic characteristics) must not be modified by you or anyone else without obtaining prior written approval from MATROT ÉQUIPEMENTS.

Your machine could become dangerous if these rules are not respected. The manufacturer will not be liable in the event of damage or injury:

Miscellaneous

MATROT ÉQUIPEMENTS will not accept liability for any incorrect information included in this manual if caused by transcription or printing errors.










The transfer or copying of this document is prohibited, in any form, as well as the use or disclosure of content, without the explicit written authorisation of MATROT ÉQUIPEMENTS.

All the information, illustrations and characteristics contained in this documentation are correct at the time of going to press. MATROT ÉQUIPEMENTS reserves the right to make any modifications considered necessary without prior notification.

This manual and the maintenance log are an integral part of the machine. They must be provided with the self-propelled sprayer to each new owner, or when it is loaned.

Warning symbols

Symbols are included throughout this manual to draw the reader's attention to specific points. Pictograms and meanings are listed below.

	<p>This symbol will be used for all safety notices, where non-compliance would lead to a direct risk for the health or mortality of the people concerned. Strict compliance is necessary. Pass these safety instructions on to operators.</p>
	<p>This symbol indicates a risk for the machine in the event of incorrect use or handling (risk of irrevocable mechanical damage). Please comply with the instructions in this manual.</p>
	<p>Important information. This symbol does not indicate a danger, but brings the operator's attention to important information or a specific setting required for optimum use of the machine.</p>
	<p>Symbol indicating that additional information can be found in the DEUTZ <i>instruction manual</i>.</p>
	<p>Symbol indicating that additional information can be found in the Xénon <i>maintenance log</i>.</p>
	<p>Maintenance symbol. Information on maintenance intervals and references for consumables is indicated where appropriate.</p>
	<p>This symbol indicates that some maintenance operations must be carried out by a MATROT technician or other member of personnel, or can be carried out by the user, possibly with the agreement of MATROT Équipements.</p>
 <p><i>Huiles claires</i></p>	<p>Symbol referring to the necessary precautions for the recovery and recycling of bright oils (e.g. hydraulic oil).</p>
 <p><i>Huiles noires</i></p>	<p>Symbol referring to the necessary precautions for the recovery and recycling of black oils (mainly engine oil).</p>

**DECLARATION OF CONFORMITY WITH THE "MACHINERY" DIRECTIVE
(Directive 89/392/CE, modified, code number 2006/42/CE)
and the regulations concerning its transposition.**

THE MANUFACTURER: MATROT ÉQUIPEMENTS
116 RUE DES POMMIERS
60480 NOYERS SAINT MARTIN
FRANCE

DECLARES THAT THE MACHINE DESIGNATED BELOW

Designation: Self-propelled sprayer XENON A21 4300- B21 4300- C21 4300- D21 4300
XENON A23 4300- B23 4300- C23 4300- D23 4300
XENON A23 5200- B23 5200- C23 5200- D23 5200
Serial number: -
Brand: MATROT

COMPLIES WITH THE PROVISIONS OF THE MODIFIED "MACHINERY" DIRECTIVE
(DIRECTIVE 89/392/EC, CODE NUMBER 2006/42/EC) AND THE NATIONAL LAWS TRANSPOSING IT.

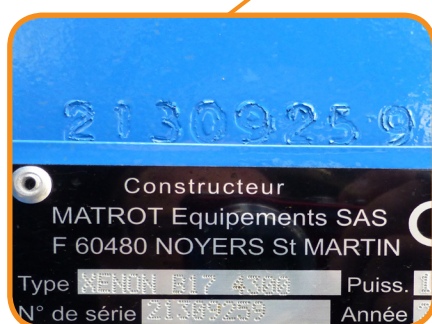
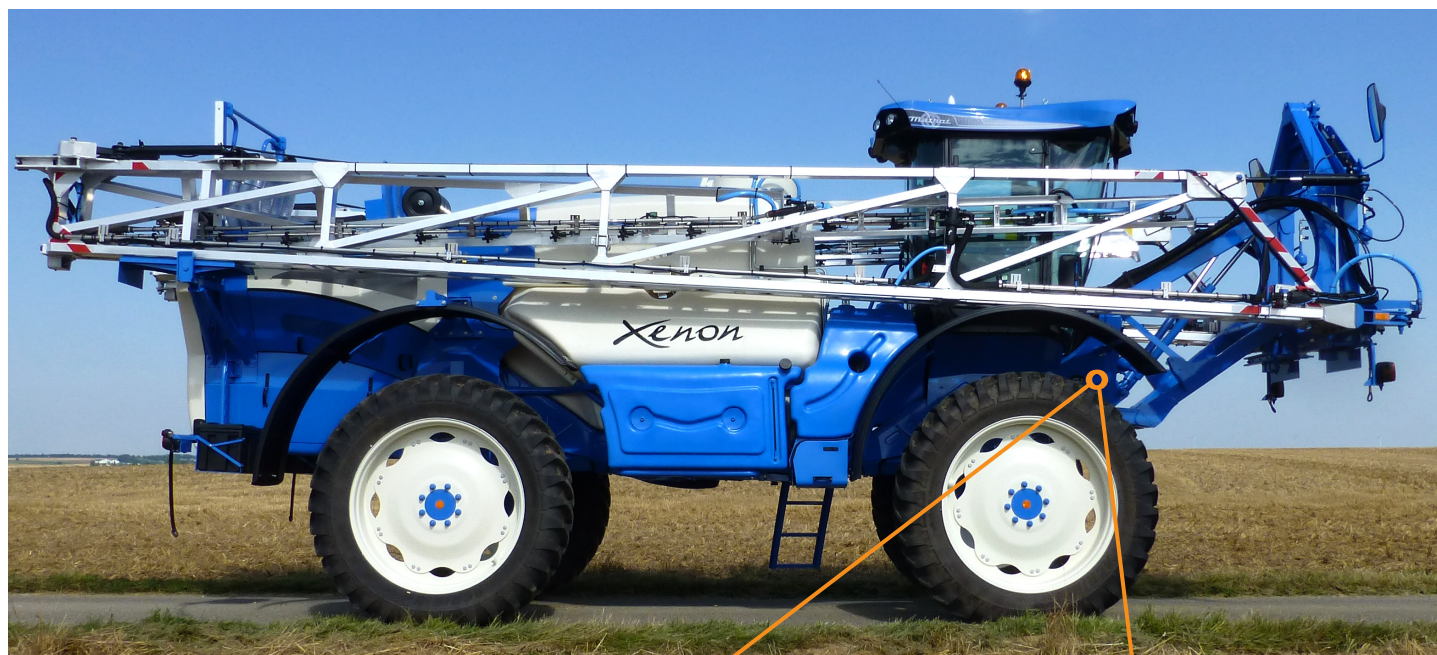
ALSO COMPLIES WITH NATIONAL STANDARDS.

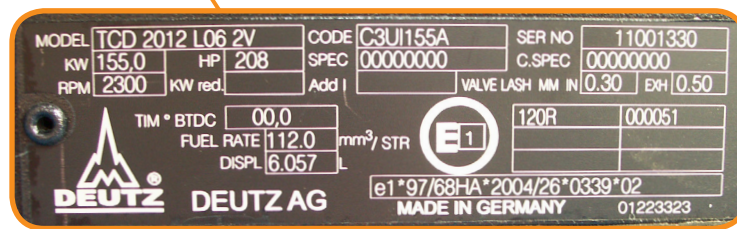
AT NOYERS SAINT MARTIN

MATROT Equipements
S.A.S au capital de 1.050.000 €
RCS BEAUVAIS B 344 596 671
116, rue des Pommiers
F - 60480 NOYERS SAINT MARTIN
Tél. : 03 44 80 66 33 - Fax : 03 44 80 66 30
N° CEE : FR 12 344 596 671

Identification of the self-propelled sprayer

The machine and engine serial numbers and the EC authorisation can be found in the following locations:





Record your machine data below

Type	
Serial number	
Year of manufacture	
Engine serial number (SER NO)	
Date of initial use of the self-propelled sprayer	
Dealer's telephone number	

Do not remove the maker's and engine plates from the self-propelled sprayer.