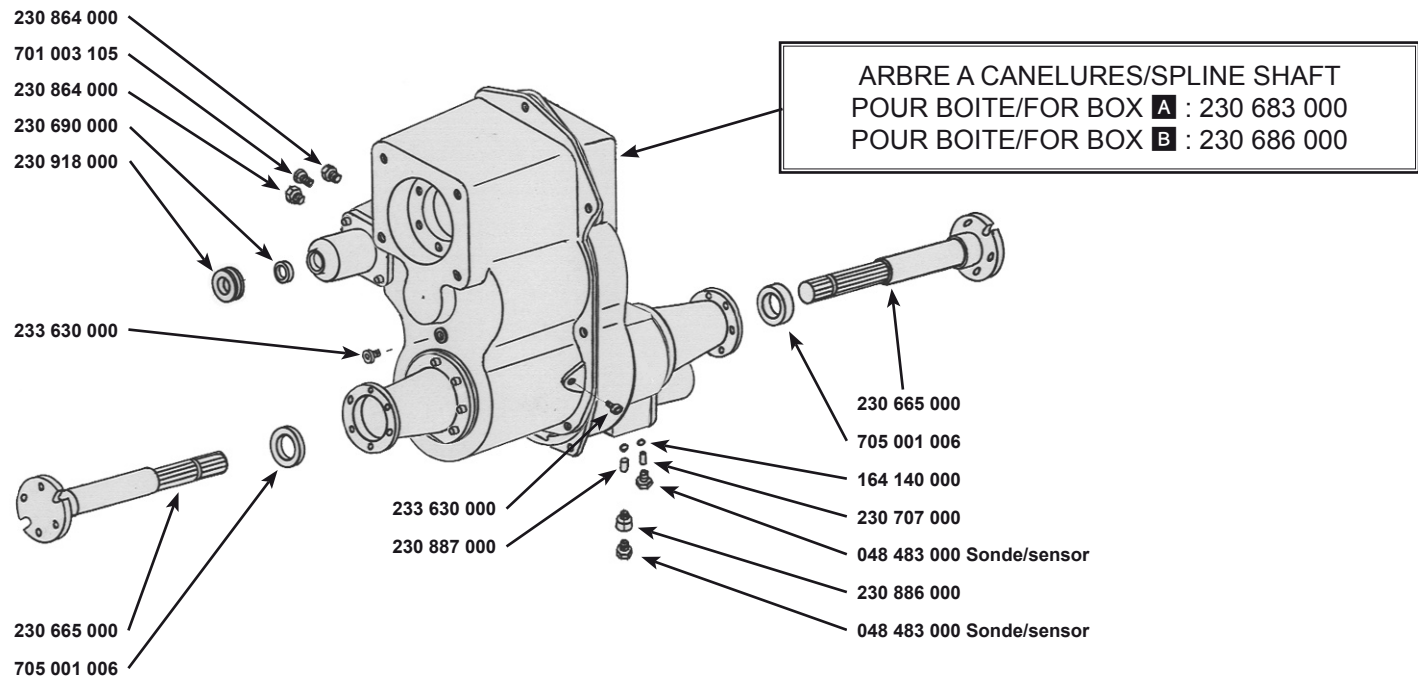
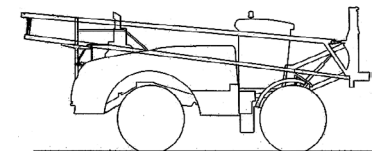


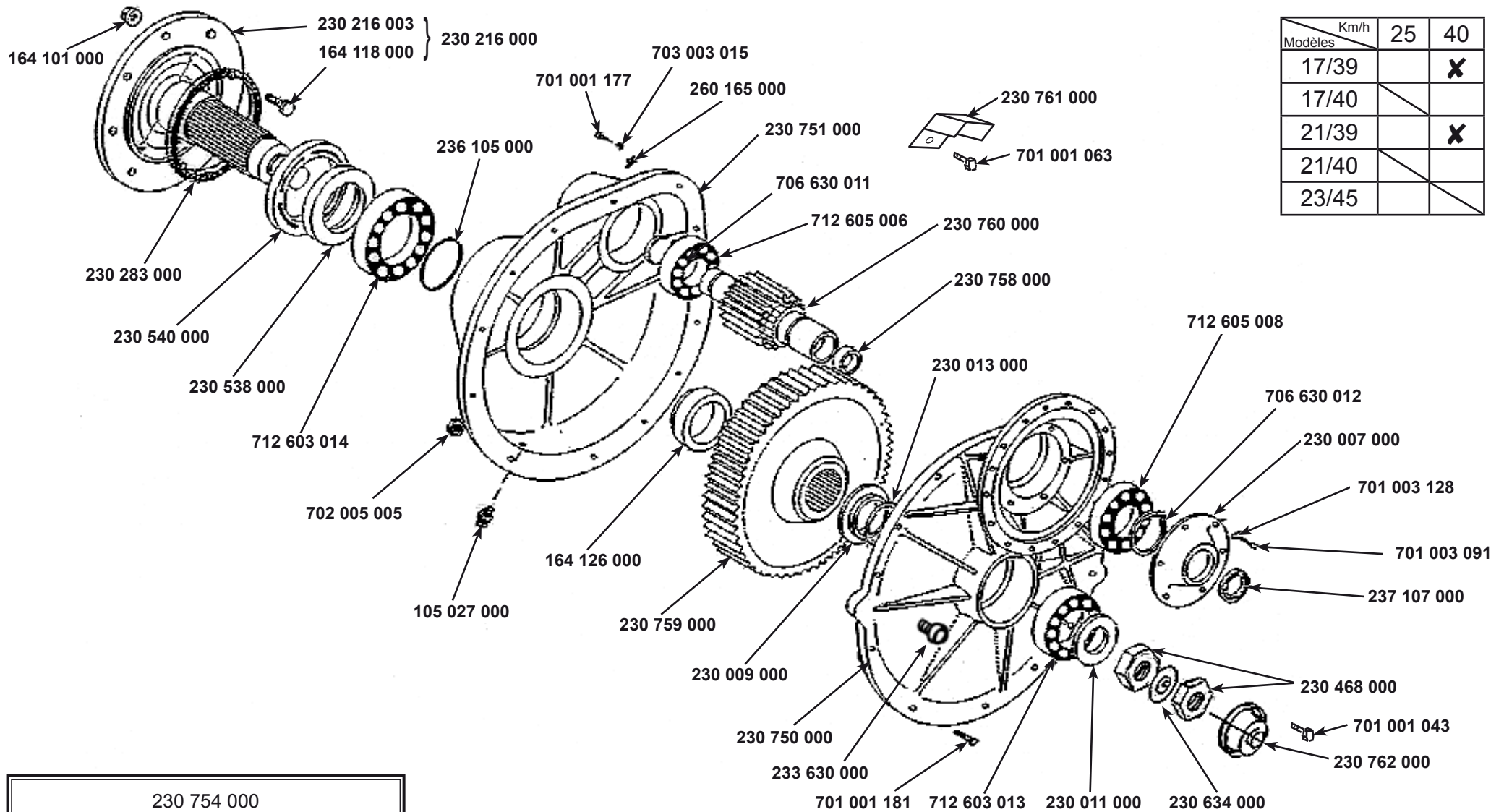
Modèles	Km/h	25	40
17/39			X
17/40			
21/39			X
21/40			
23/45			



A BOITE ÉQUIPÉE 40 KM/H MAESTRIA 17/39 ET 21/39
EQUIPED BOX - 40 KM/H - MAESTRIA 17/39 & 21/39
REF 230 713 000

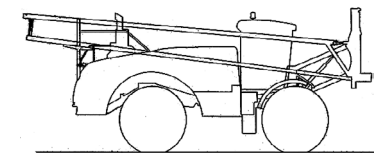
B BOITE ÉQUIPÉE 40 KM/H MAESTRIA 17/39 ET 21/39
"SPÉCIAL COTEAUX"
EQUIPED BOX - 40 KM/H - MAESTRIA 17/39 & 21/39
"SPECIAL HILLSIDE"
REF 230 714 000





Km/h	25	40
17/39		X
17/40		
21/39		X
21/40		
23/45		

230 754 000
RÉDUCTEUR COMPLET 40 KM/H
COMPLETE FINAL DRIVE 40 KM/H

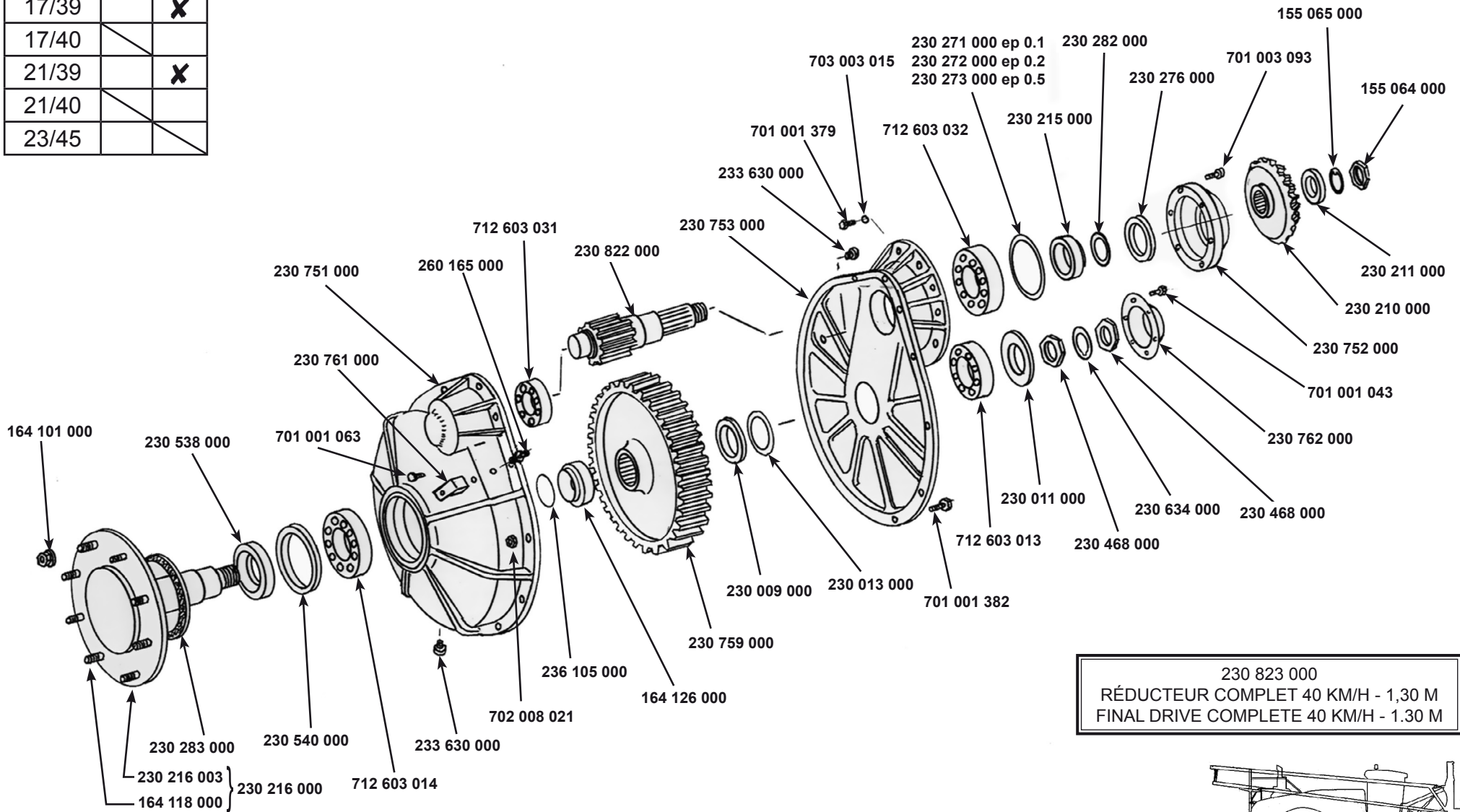


**CATALOGUE MAESTRIA
RAMPE AV 2004**

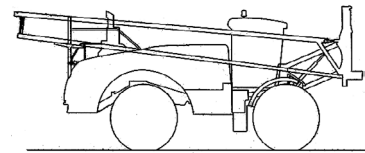
Correctif mars 2009/March 2009 correction

RÉDUCTEUR 40 KM/H 1,00 M FINAL DRIVE 40 KM/H 1.00 M		12 B01 08/02/05
--	--	-----------------------

Modèles \ Km/h	25	40
17/39		X
17/40		
21/39		X
21/40		
23/45		



230 823 000
 RÉDUCTEUR COMPLET 40 KM/H - 1,30 M
 FINAL DRIVE COMPLETE 40 KM/H - 1.30 M



RÉDUCTEUR 40 KM/H - 1,30 M
 FINAL DRIVE 40 KM/H - 1.30 M



12
 B02
 18/01/05

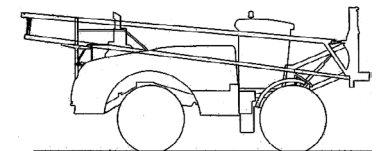
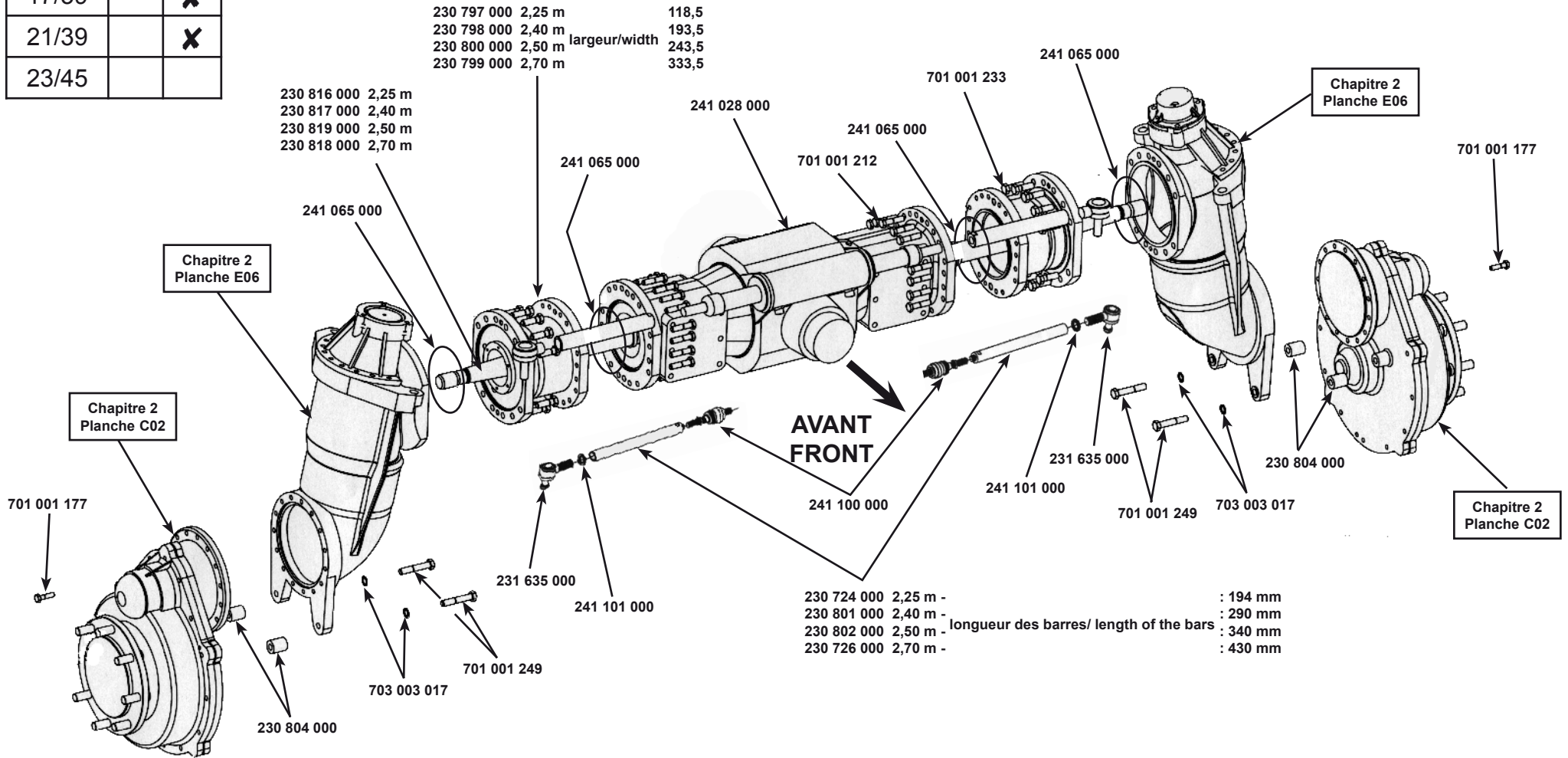
**CATALOGUE MAESTRIA
 RAMPE AV 2004**

Correctif mars 2009/March 2009 correction

	Km/h	
Modèles	25	40
17/39		X
21/39		X
23/45		

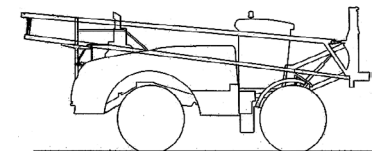
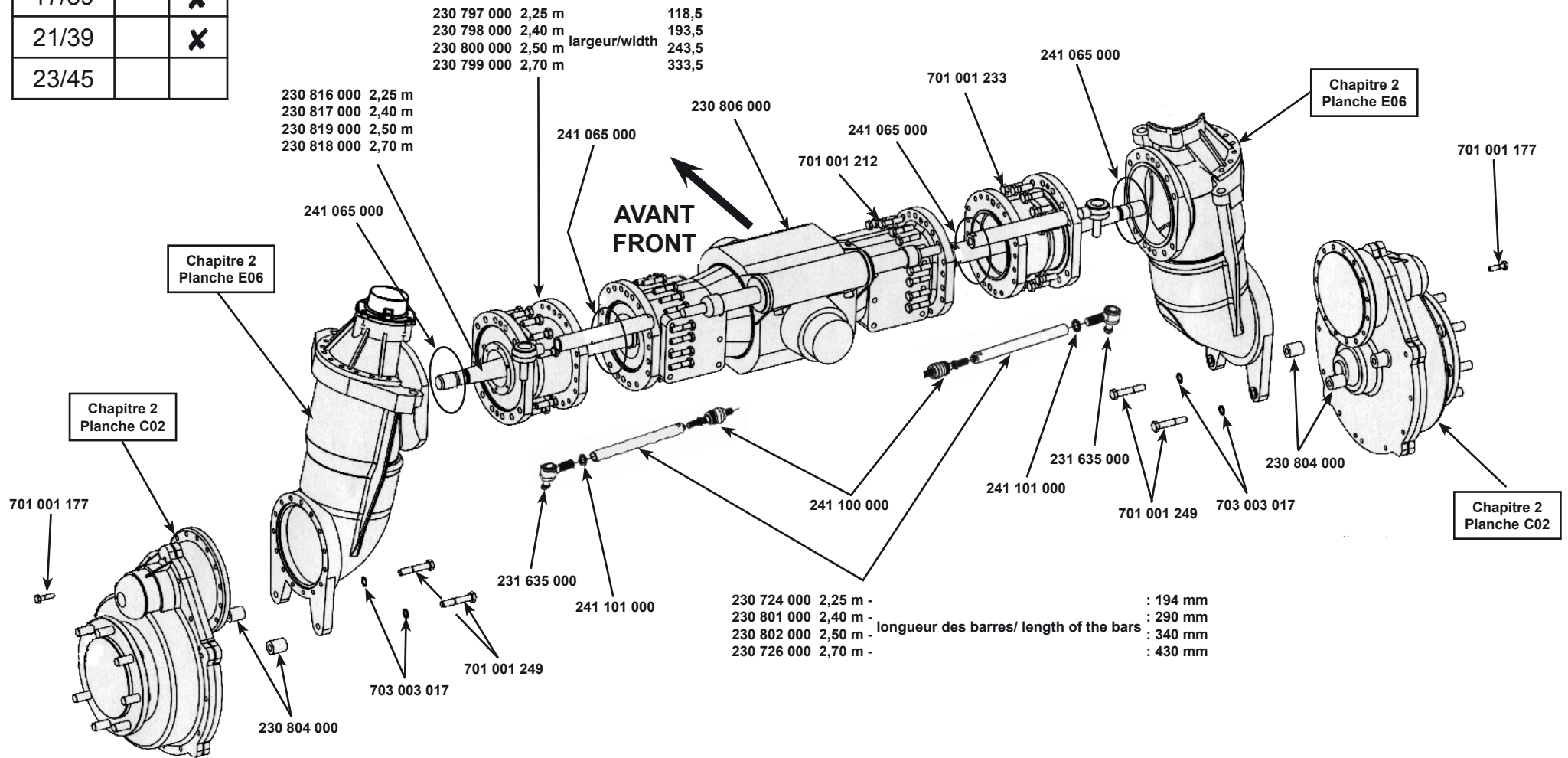
230 797 000 2,25 m 118,5
 230 798 000 2,40 m 193,5
 230 800 000 2,50 m largeur/width 243,5
 230 799 000 2,70 m 333,5

230 816 000 2,25 m
 230 817 000 2,40 m
 230 819 000 2,50 m
 230 818 000 2,70 m

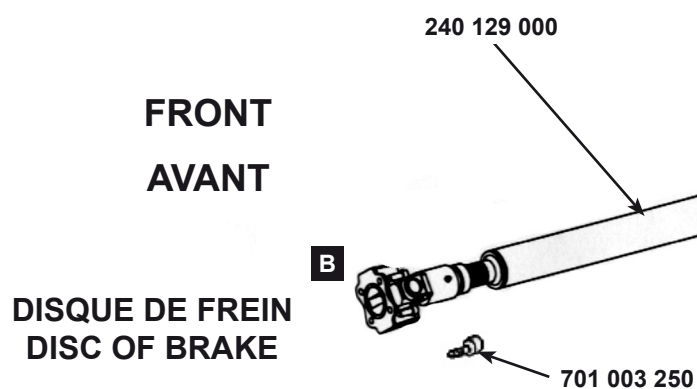
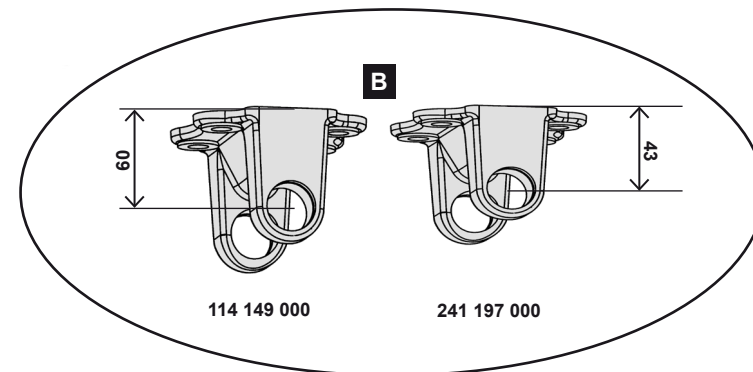
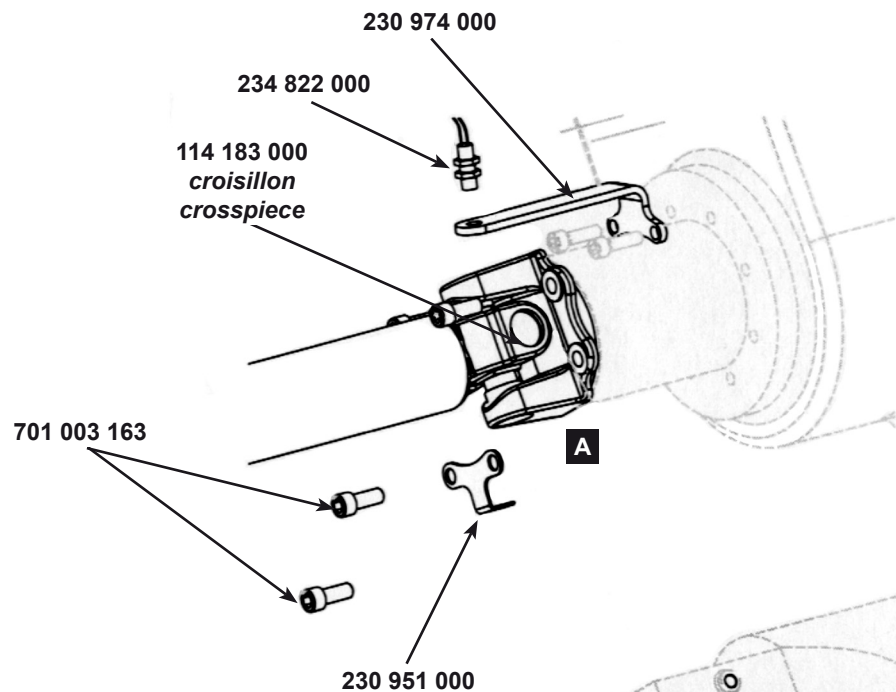


PONT AVANT 40 KM/H - 1,30 M FRONT AXLE 40 KM/H - 1.30 M		12
		C01 29/03/05

Modèles	Km/h	
	25	40
17/39		✗
21/39		✗
23/45		



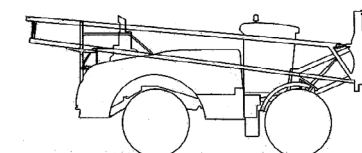
Km/h	25	40
Modèles		
17/39		X
21/39		X
23/45		



DISQUE DE FREIN
DISC OF BRAKE

FRONT
AVANT

REAR
ARRIÈRE



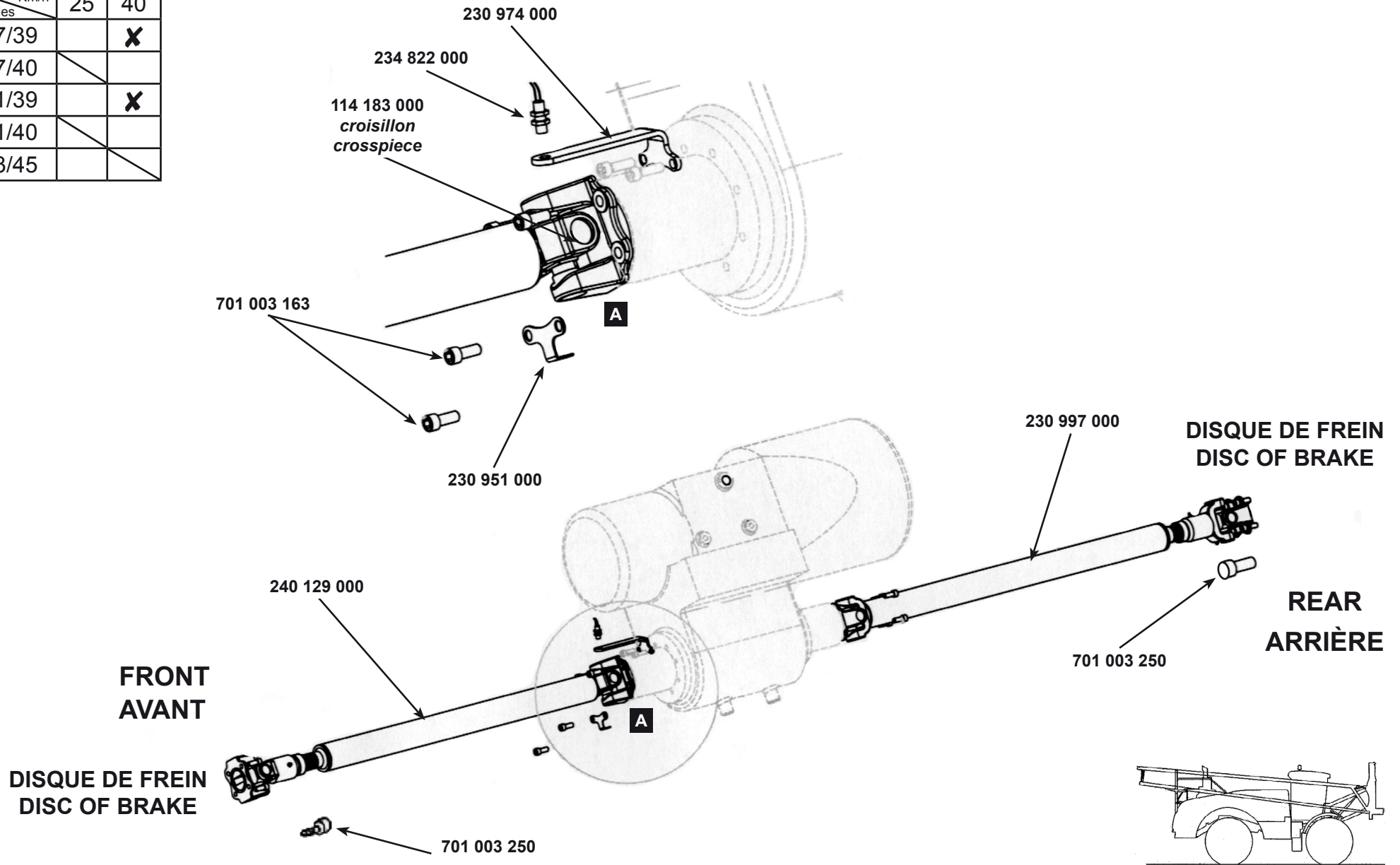
CATALOGUE MAESTRIA
RAMPE AV 2004
Correctif mars 2009/March 2009 correction

TRANSMISSION OSCAR JUSQU'EN 2006
OSCAR PROPELLER SHAFT UNTIL 2006



12
D01
28/06/04

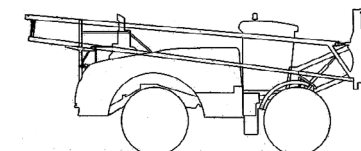
Modèles \ Km/h	25	40
17/39		X
17/40		
21/39		X
21/40		
23/45		



CATALOGUE MAESTRIA
RAMPE AV 2004
 Correctif mars 2009/March 2009 correction

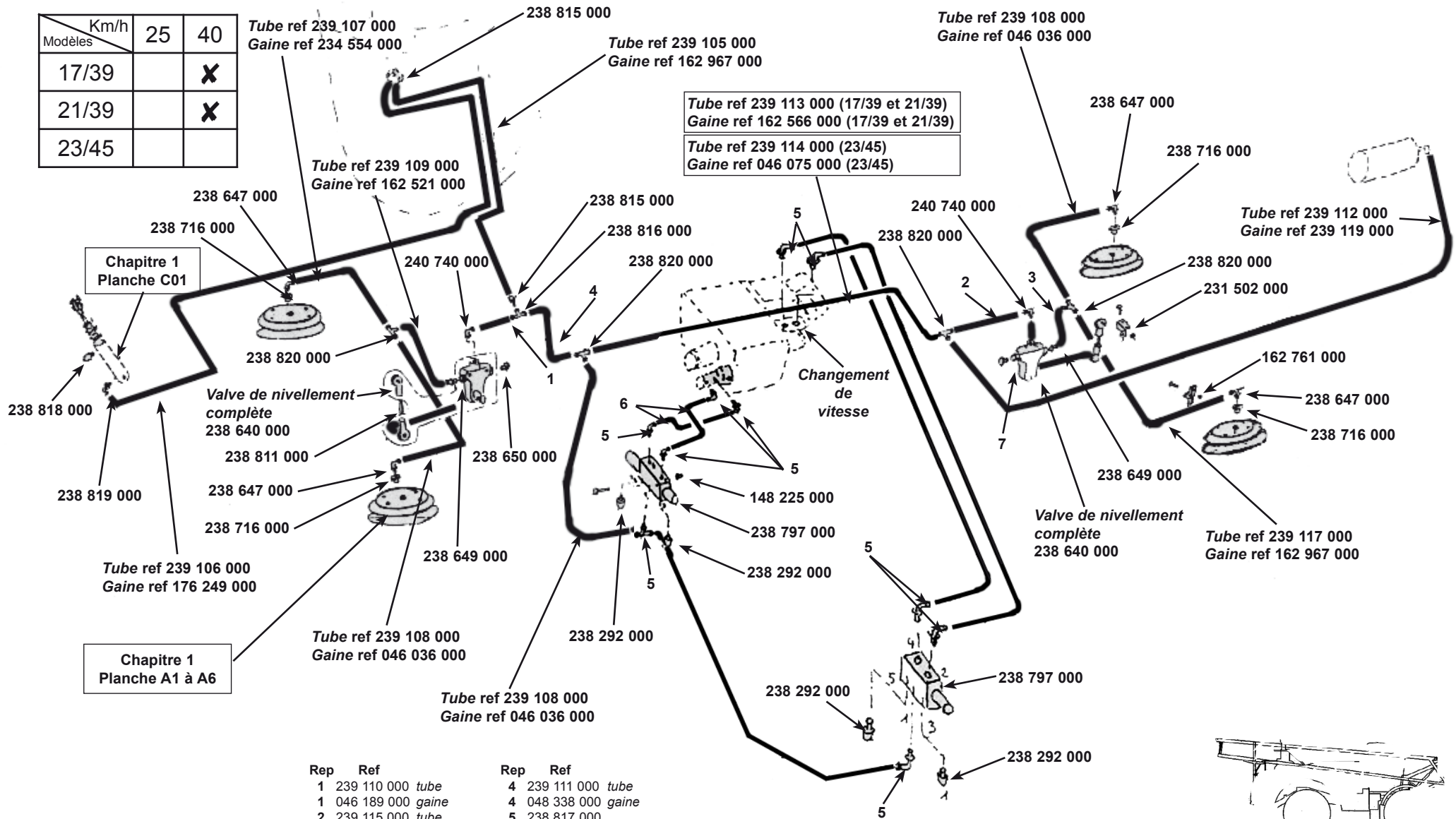
TRANSMISSION OSCAV OSCAV PROPELLER SHAFT		12 D02 28/06/04
---	---	-----------------------

Modèles \ Km/h	25	40	MARQUE BRAND	DIMENSIONS PNEU TYRE SIZE	Largeur Width	Circonf. Circumf.	R. s/charge Loaded radius	Jante recommandée (admise) Recommended rim (admitted)	Référence pneu Tyre items
17/39		X							
21/39		X	Michelin/Kléber	380/90 R 46	405	5486	850	W13A, W12A, W13A	231 634 000
23/45			Alliance	380/90 R 46	378	5454	841	W13 (W11, W12)	518 004 011
			Michelin/Kléber	480/80 R 46	471	5874	892	DW16A (W16A)	230 748 000
			Michelin/Kléber	480/80 R 50	474	6184	942	DW15A	231 662 000
			Michelin/Kléber	520/85 R 46	515	6088	919	DW16A , (W16A, DW16L, DWW18A, DWW18L)	241 039 000
			Alliance	520/85 R 46	530	6105	939	DW16 , (W15, DW18L)	518 004 007
			Michelin/Kléber	620/70 R 38	608	5557	850	DW20A , (DW18L)	163 109 000
			Michelin/Kléber	620/70 R 42	631	5795	874	DW20A , (DW18L)	230 585 000
			Trelleborg	620/70 R 42	625	5850	871	DW20A	518 003 004
			Michelin/Kléber	650/65 R 38	645	5400	799	DW18L , (DW20A, DWW16L)	230 971 000



MONTE DE PNEUMATIQUES 40 KM/H WHEELS AND TYRES - 40 KM/H		12 E01 08/11/05
---	---	-----------------------

Km/h	25	40
Modèles		
17/39		X
21/39		X
23/45		



Tube ref 239 113 000 (17/39 et 21/39)
Gaine ref 162 566 000 (17/39 et 21/39)

Tube ref 239 114 000 (23/45)
Gaine ref 046 075 000 (23/45)

Tube ref 239 107 000
Gaine ref 234 554 000

Tube ref 239 105 000
Gaine ref 162 967 000

Tube ref 239 108 000
Gaine ref 046 036 000

Tube ref 239 109 000
Gaine ref 162 521 000

Tube ref 239 112 000
Gaine ref 239 119 000

Valve de nivellement
complète
238 640 000

Changement
de
vitesse

Valve de nivellement
complète
238 640 000

Tube ref 239 106 000
Gaine ref 176 249 000

Tube ref 239 108 000
Gaine ref 046 036 000

Tube ref 239 117 000
Gaine ref 162 967 000

Chapitre 1
Planche A1 à A6

Tube ref 239 108 000
Gaine ref 046 036 000

Rep	Ref
1	239 110 000 tube
1	046 189 000 gaine
2	239 115 000 tube
2	162 524 000 gaine
3	239 116 000 tube
3	048 695 000 gaine

Rep	Ref
4	239 111 000 tube
4	048 338 000 gaine
5	238 817 000
6	239 118 000 tube
6	239 120 000 gaine
7	238 650 000