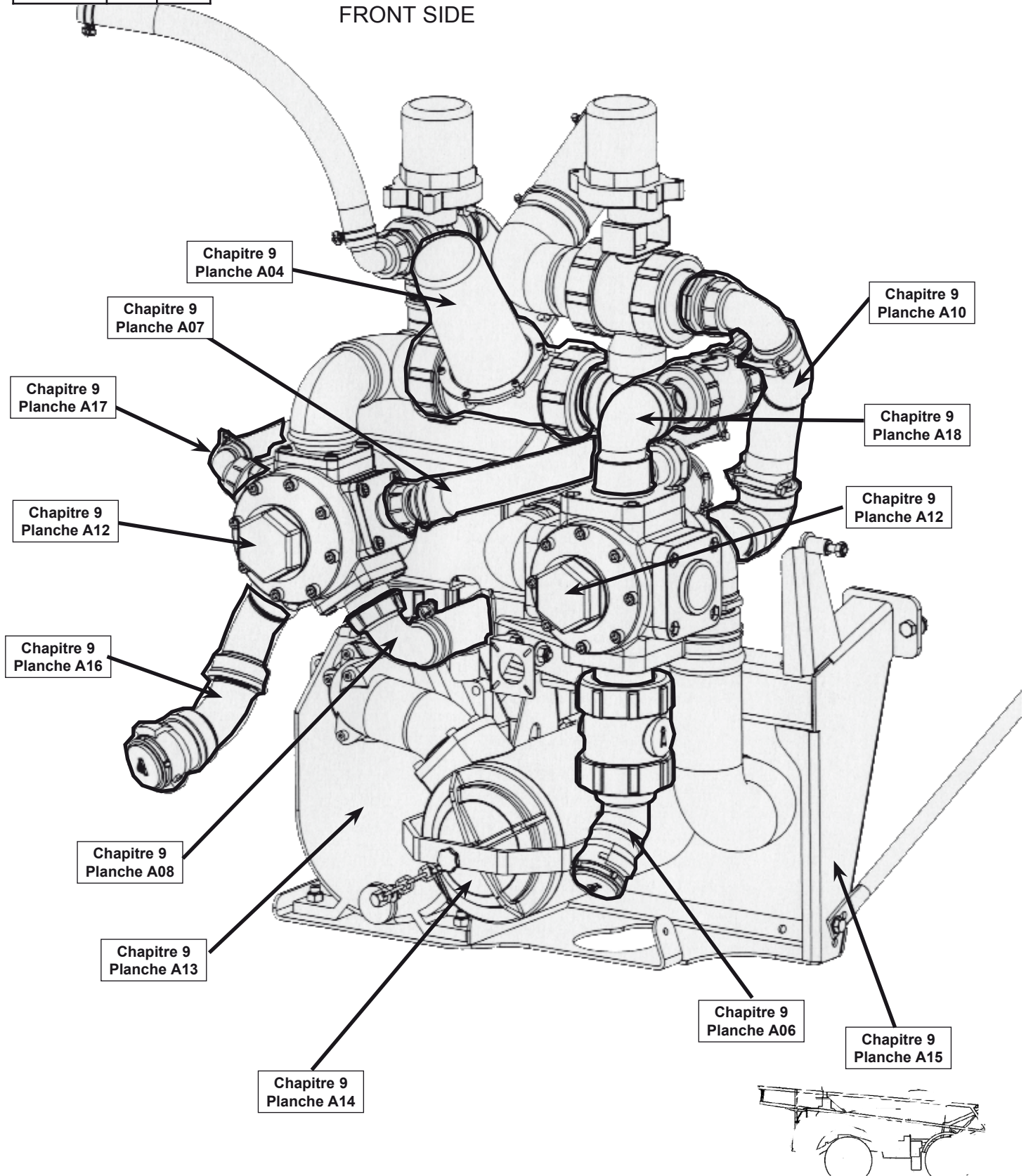


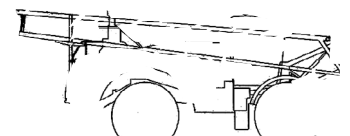
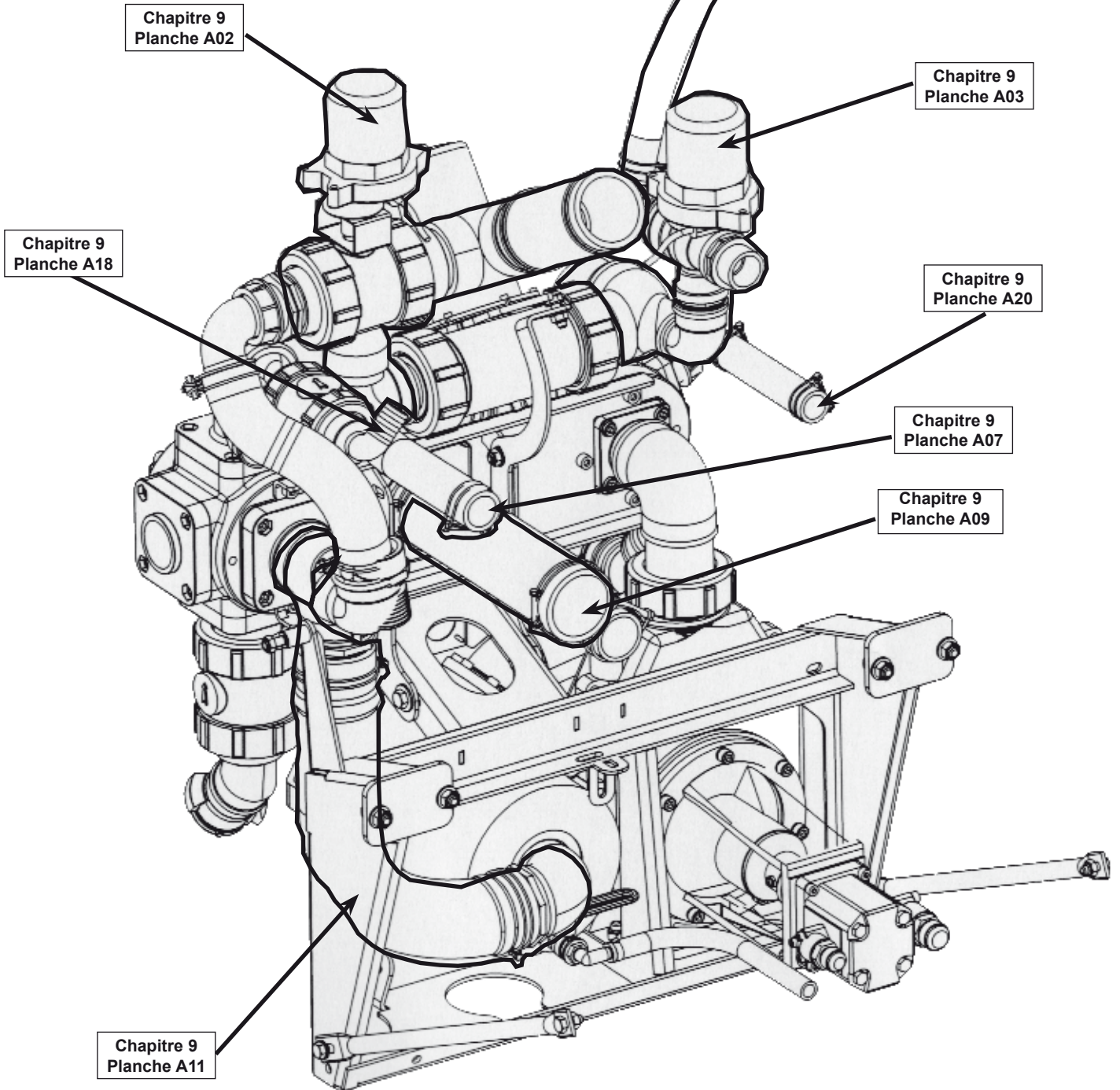
Km/h	25	40
17/39	X	X
21/39	X	X
23/45	X	

FACE AVANT
FRONT SIDE



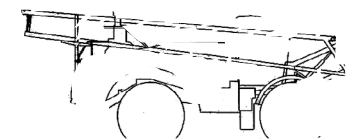
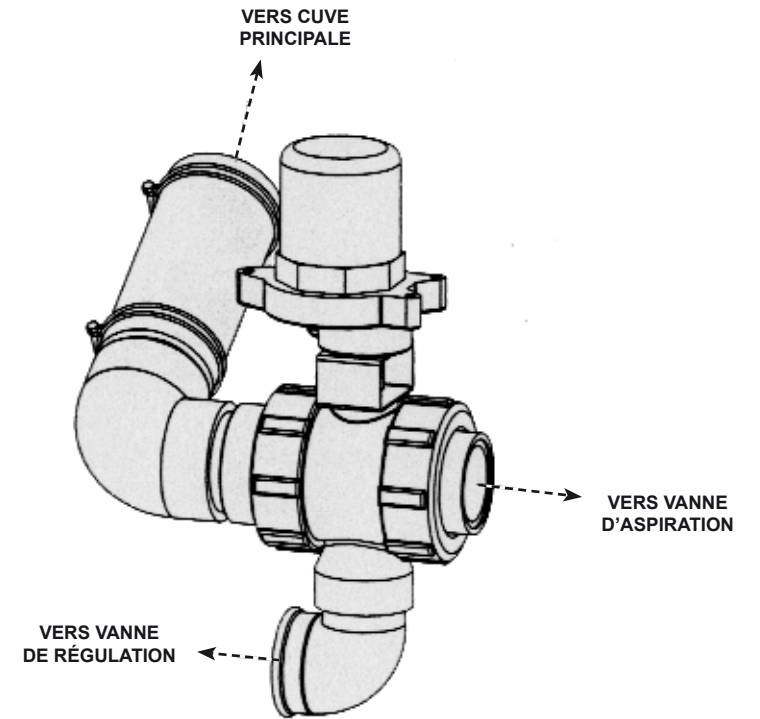
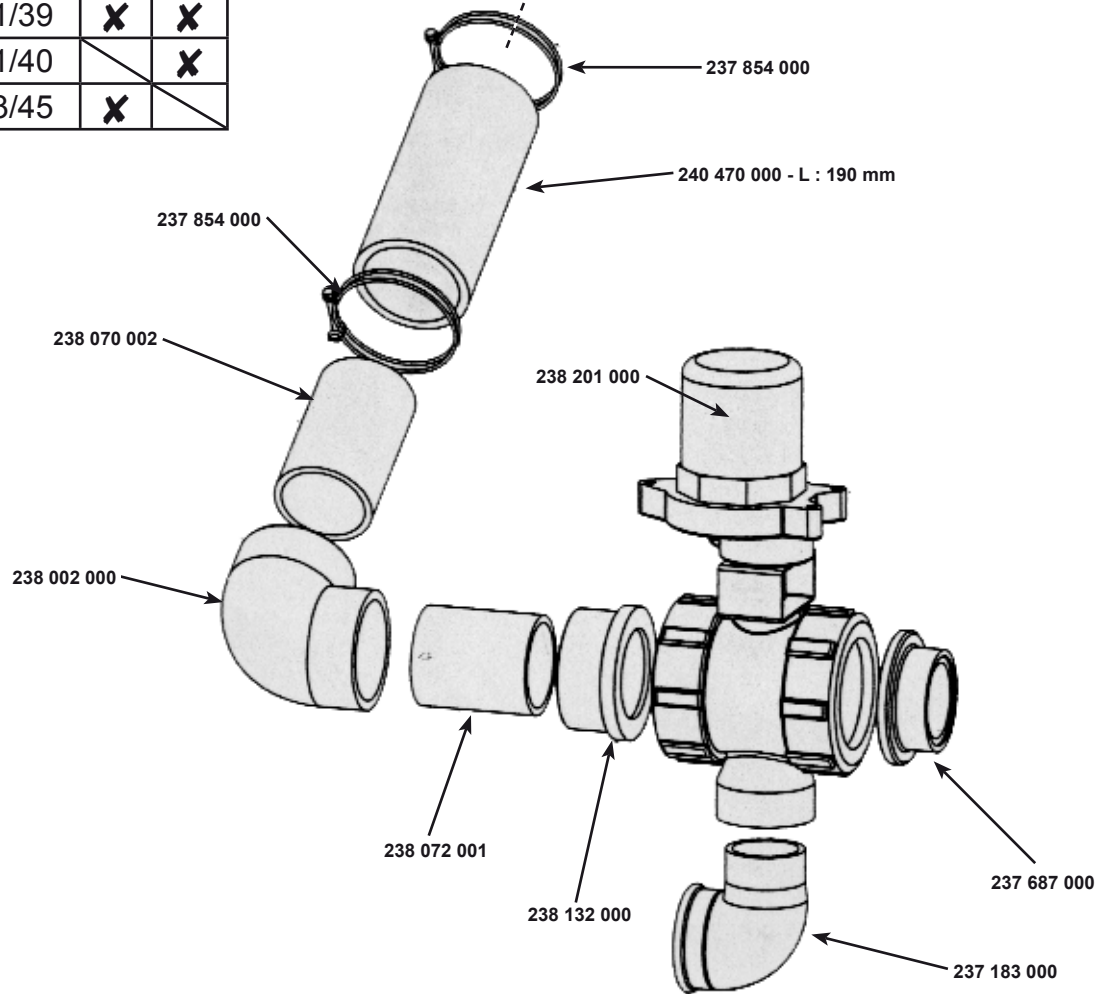
Km/h Modèles	25	40
17/39	X	X
21/39	X	X
23/45	X	

FACE ARRIÈRE
REAR SIDE



Modèles \ Km/h	25	40
17/39	X	X
17/40		X
21/39	X	X
21/40		X
23/45	X	

Chapitre 9
Planche A19
Rep E



**CATALOGUE MAESTRIA
RAMPE AV 2004**

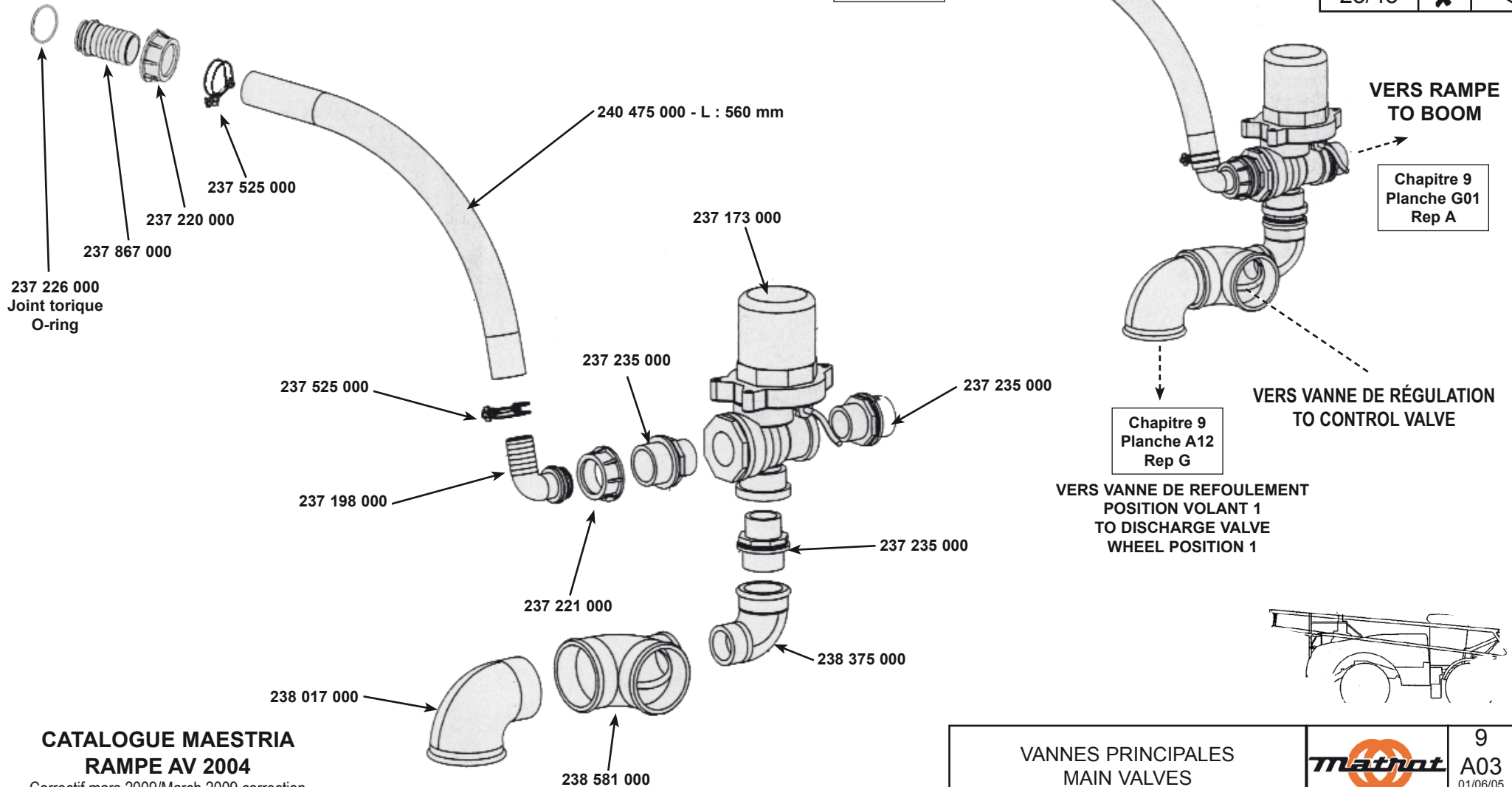
Correctif mars 2009/March 2009 correction

RETOUR VERS BRASSAGE
RETURN TO MIXING



9
A02
02/06/05

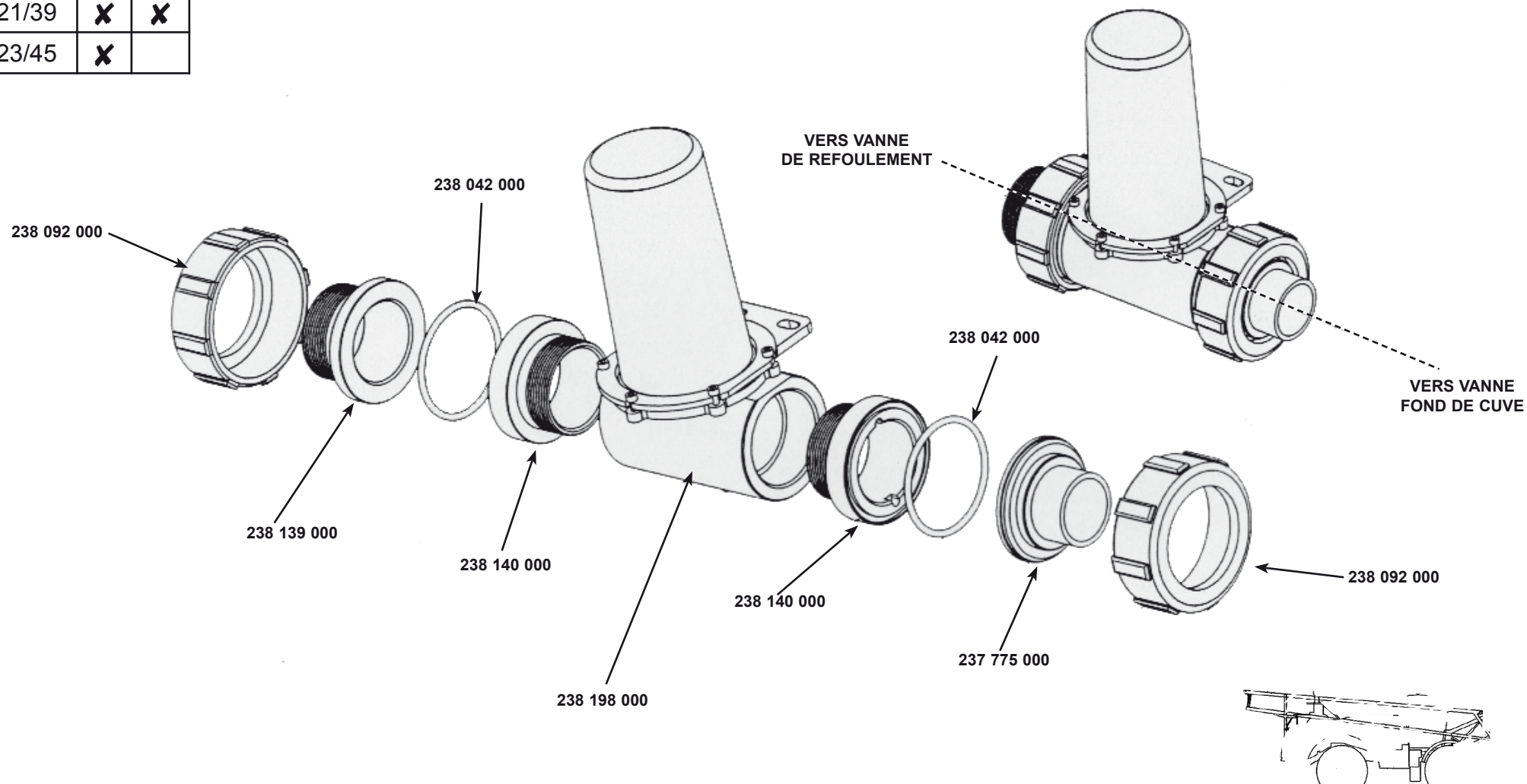
Modèles \ Km/h	25	40
17/39	X	X
17/40		X
21/39	X	X
21/40		X
23/45	X	



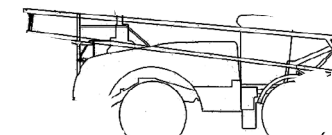
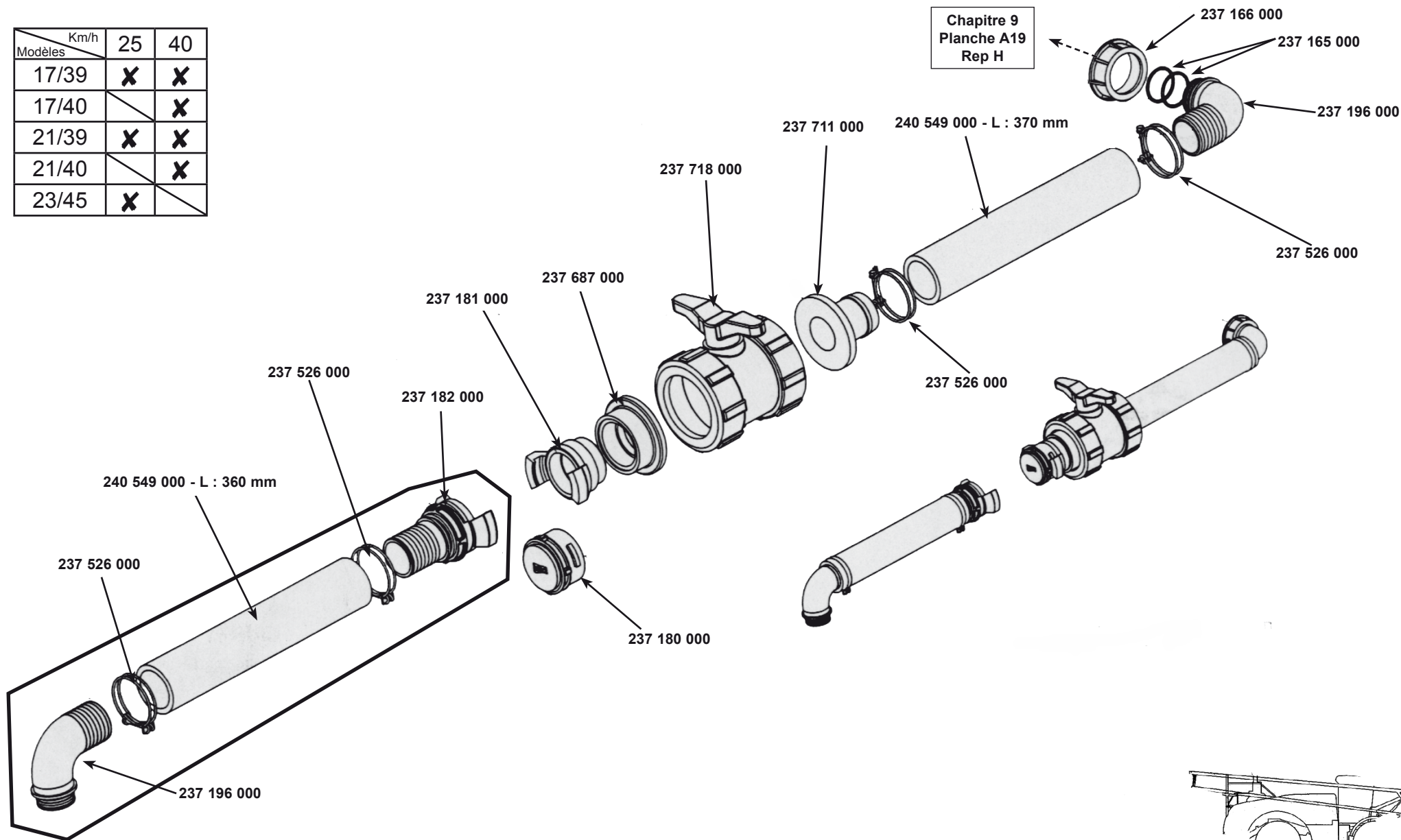
CATALOGUE MAESTRIA
RAMPE AV 2004
 Correctif mars 2009/March 2009 correction

VANNES PRINCIPALES MAIN VALVES		9 A03 01/06/05
-----------------------------------	---	----------------------

Km/h Modèles	25	40
17/39	X	X
21/39	X	X
23/45	X	



Modèles \ Km/h	25	40
17/39	X	X
17/40		X
21/39	X	X
21/40		X
23/45	X	



CATALOGUE MAESTRIA
RAMPE AV 2004

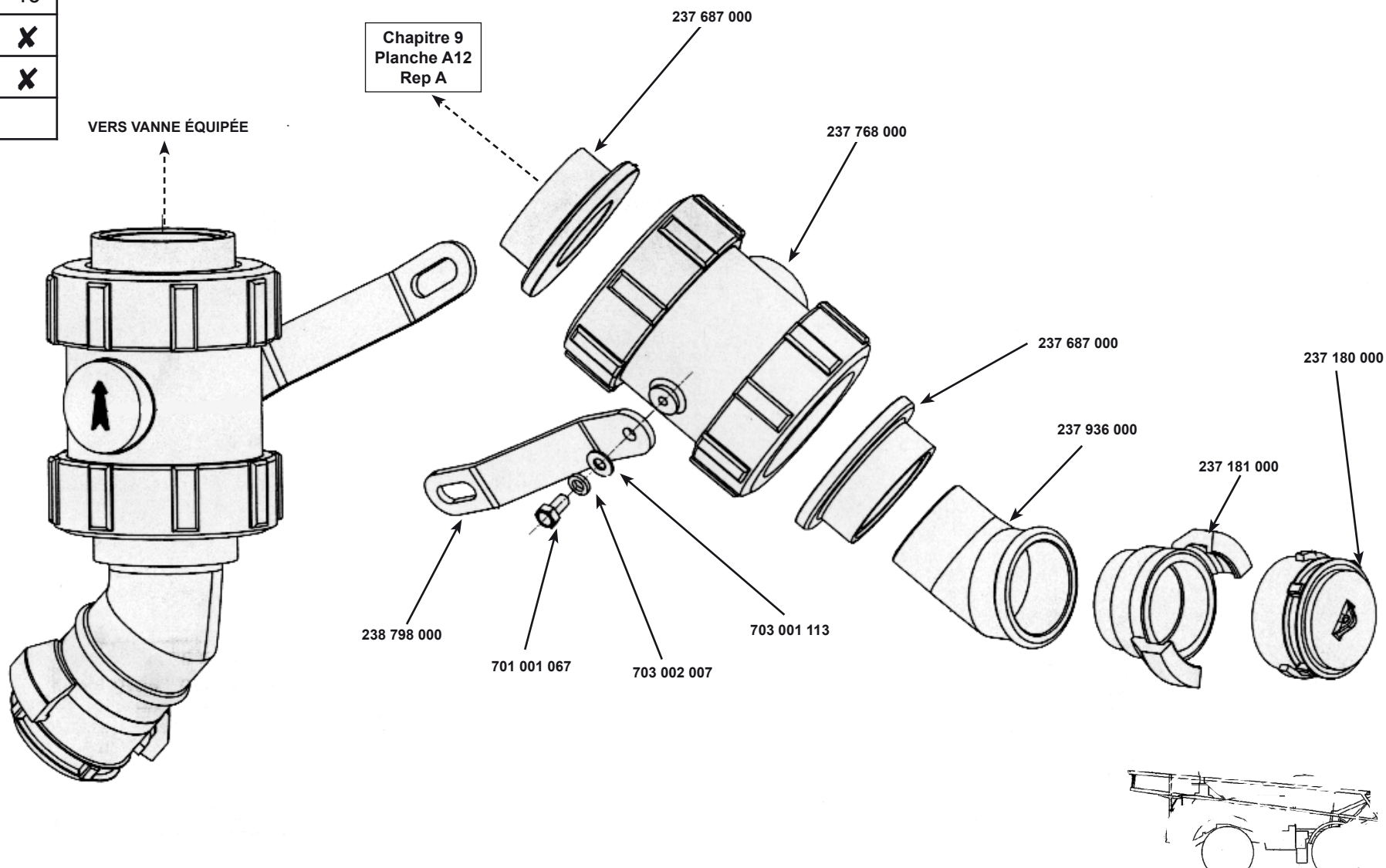
Correctif mars 2009/March 2009 correction

VIDANGE CUVE
DRAIN TAP

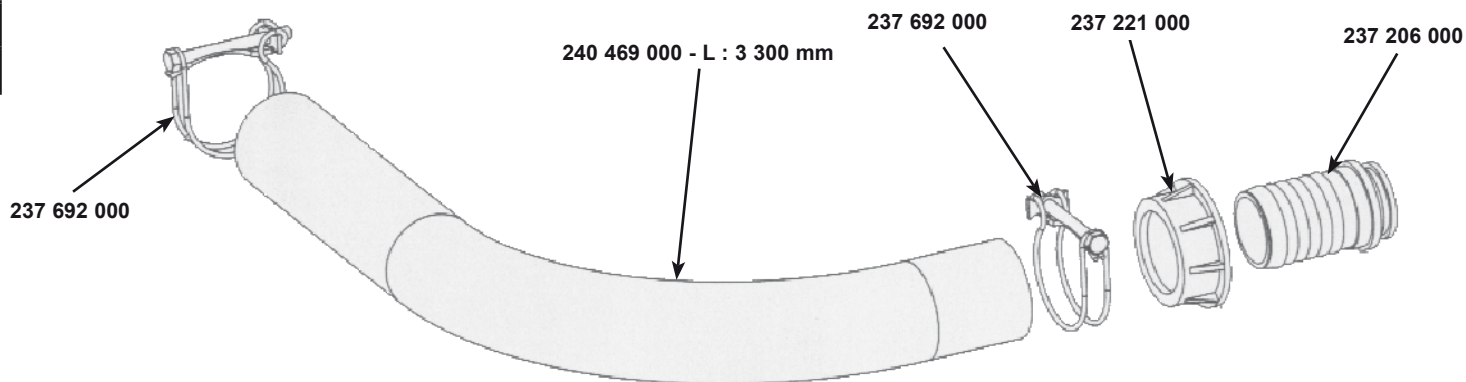


9
A05
23/05/05

Km/h	25	40
17/39	X	X
21/39	X	X
23/45	X	



Modèles \ Km/h	25	40
17/39	X	X
17/40		X
21/39	X	X
21/40		X
23/45	X	



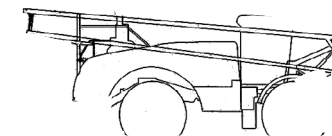
VERS INCORPORATEUR

Chapitre 9
Planche E02
Rep B

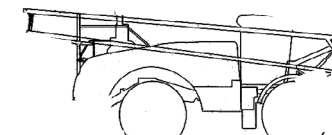
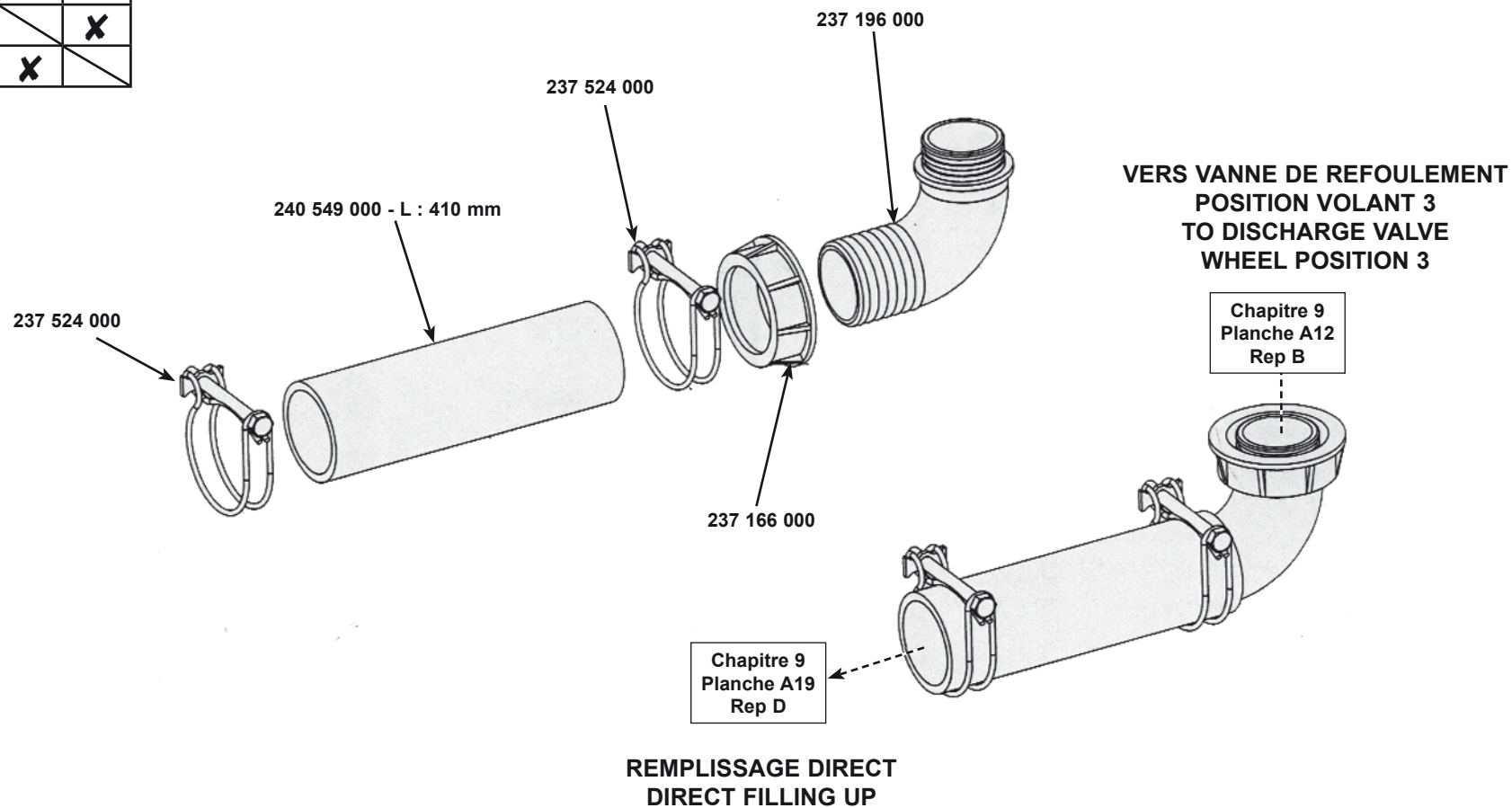


Chapitre 9
Planche A12
Rep K

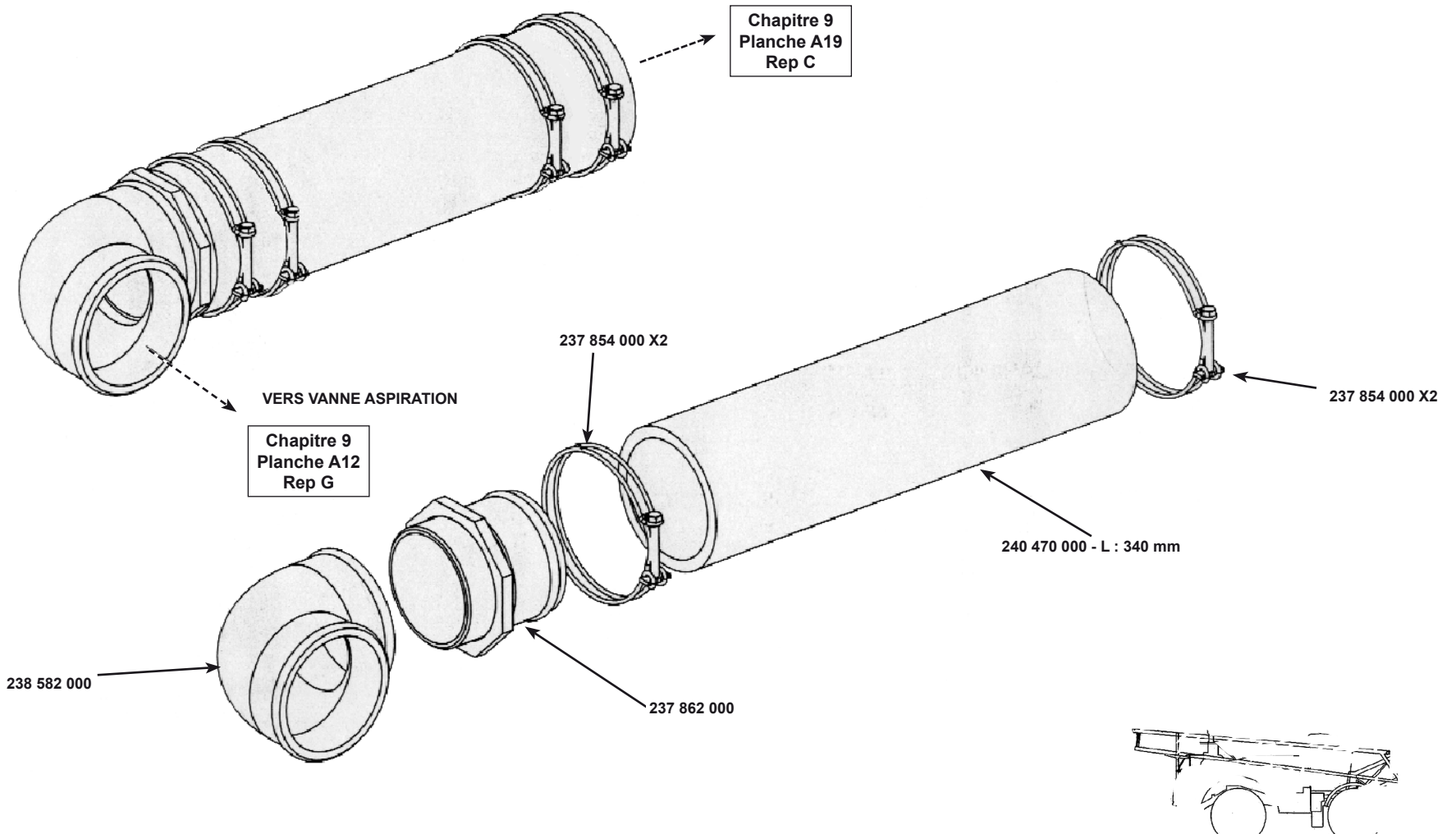
**VERS VANNE DE REFOULEMENT
POSITION VOLANT 2**




Modèles \ Km/h	25	40
17/39	X	X
17/40		X
21/39	X	X
21/40		X
23/45	X	

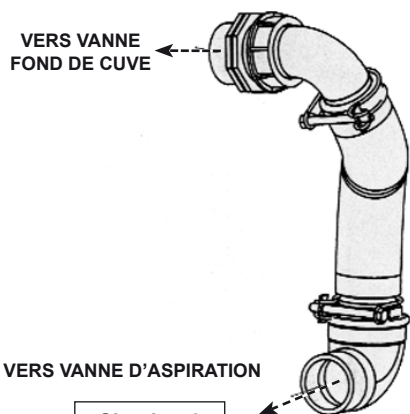


Modèles \ Km/h	25	40
17/39	X	X
17/40		X
21/39	X	X
21/40		X
23/45	X	

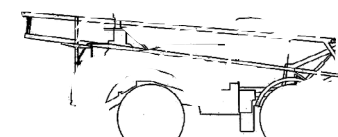
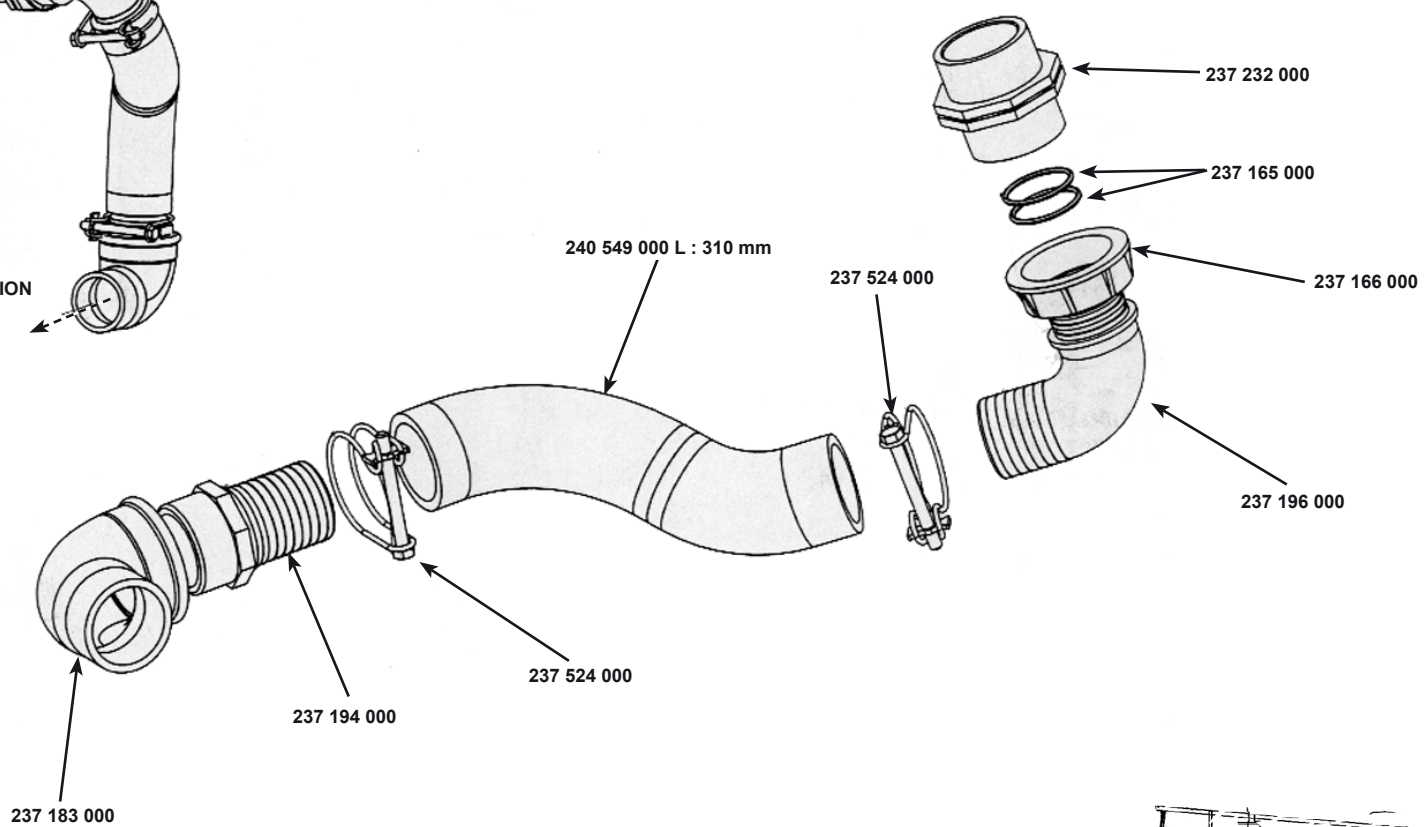


ASPIRATION CUVE PRINCIPALE MAIN TANK ASPIRATION		9 A09 02/06/05
--	---	----------------------

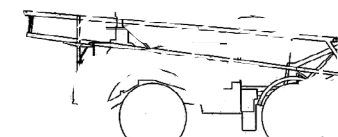
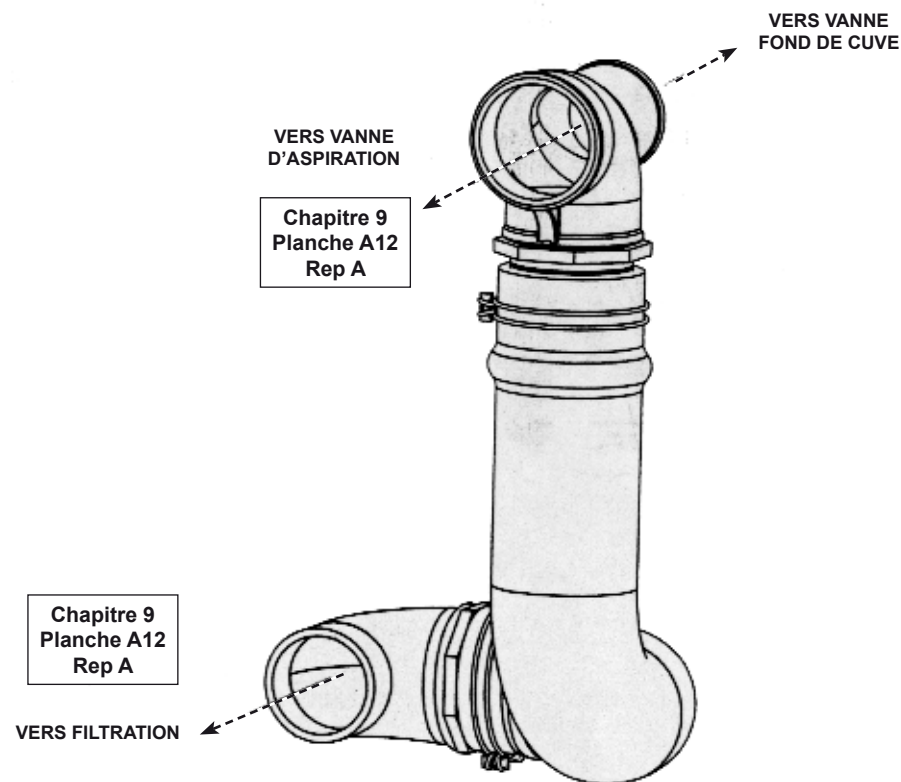
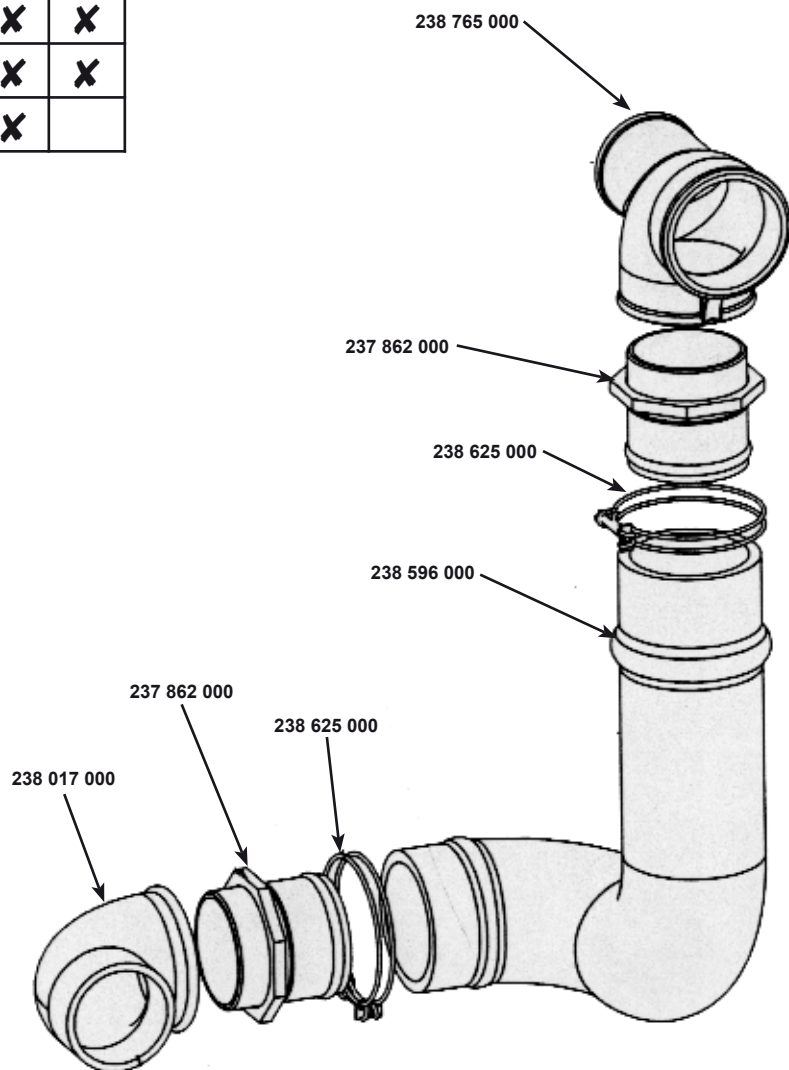
Modèles \ Km/h	25	40
17/39	X	X
17/40		X
21/39	X	X
21/40		X
23/45	X	



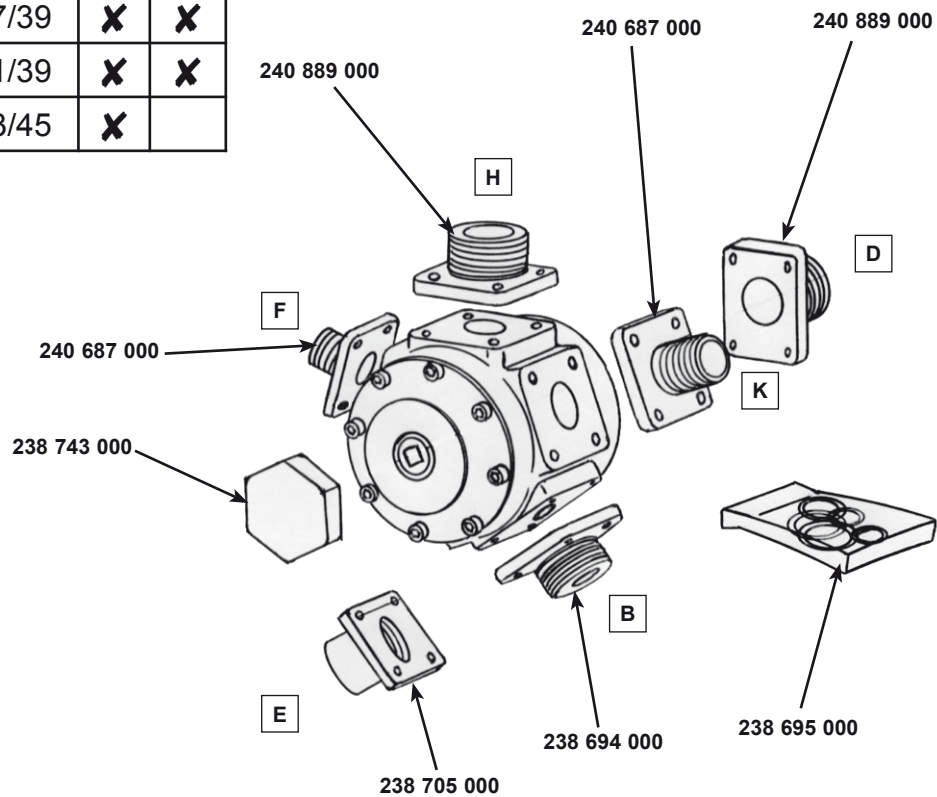
Chapitre 9
Planche A11
Rep A



Km/h Modèles	25	40
17/39	X	X
21/39	X	X
23/45	X	

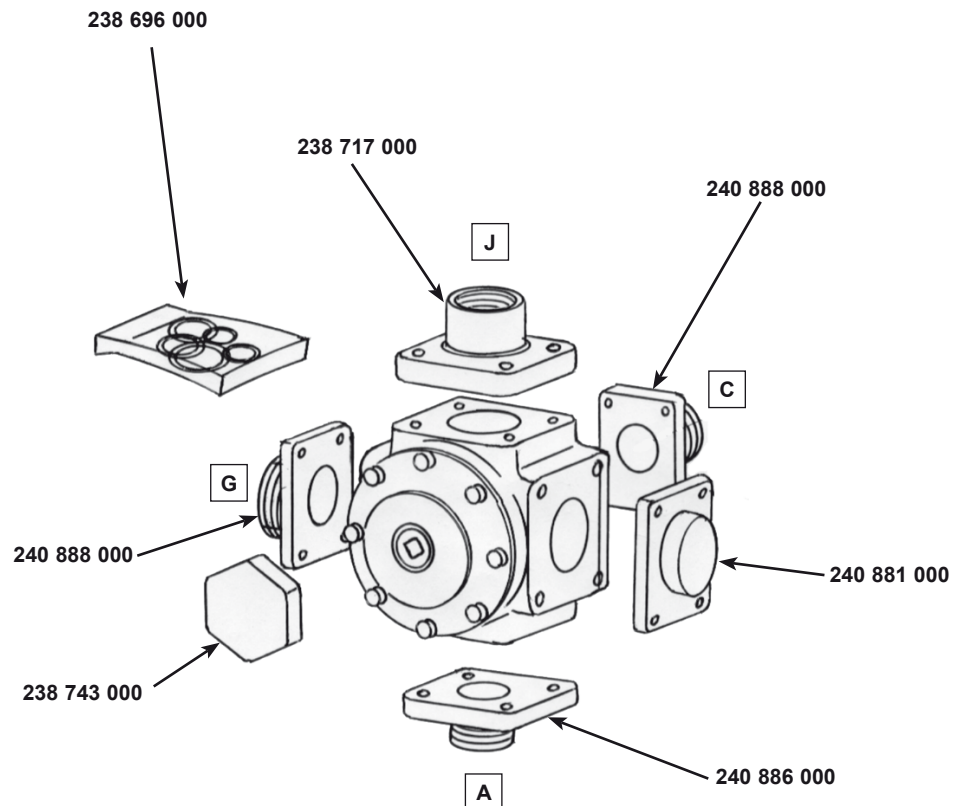


Km/h Modèles	25	40
17/39	X	X
21/39	X	X
23/45	X	



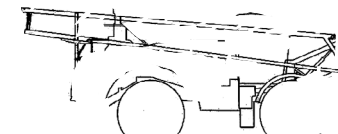
Vanne complète 6 Voies
238 748 000

Sphère
244 228 000

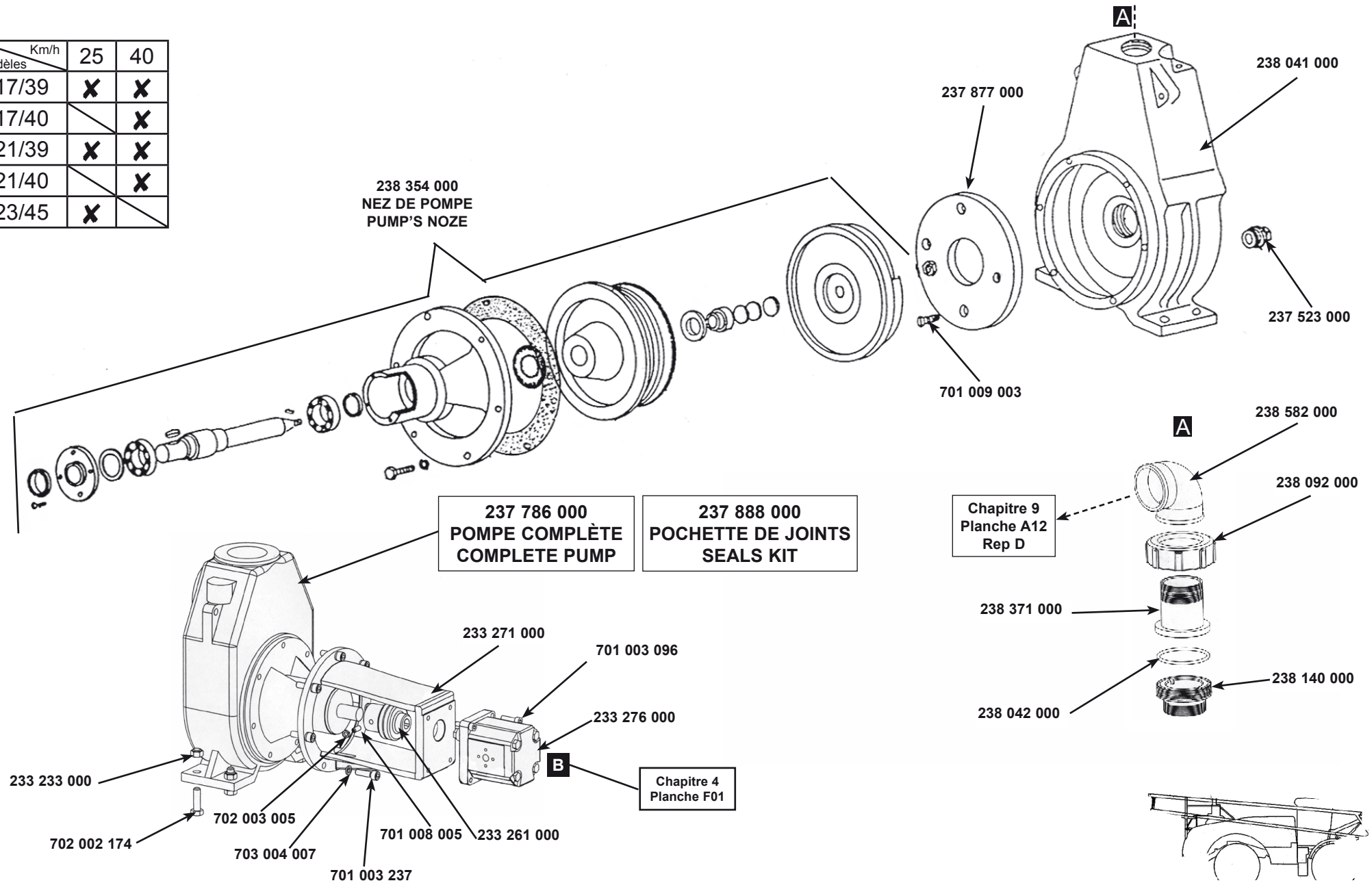


Vanne complète 5 Voies
238 747 000

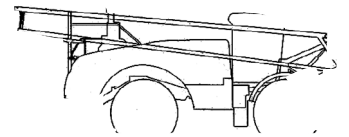
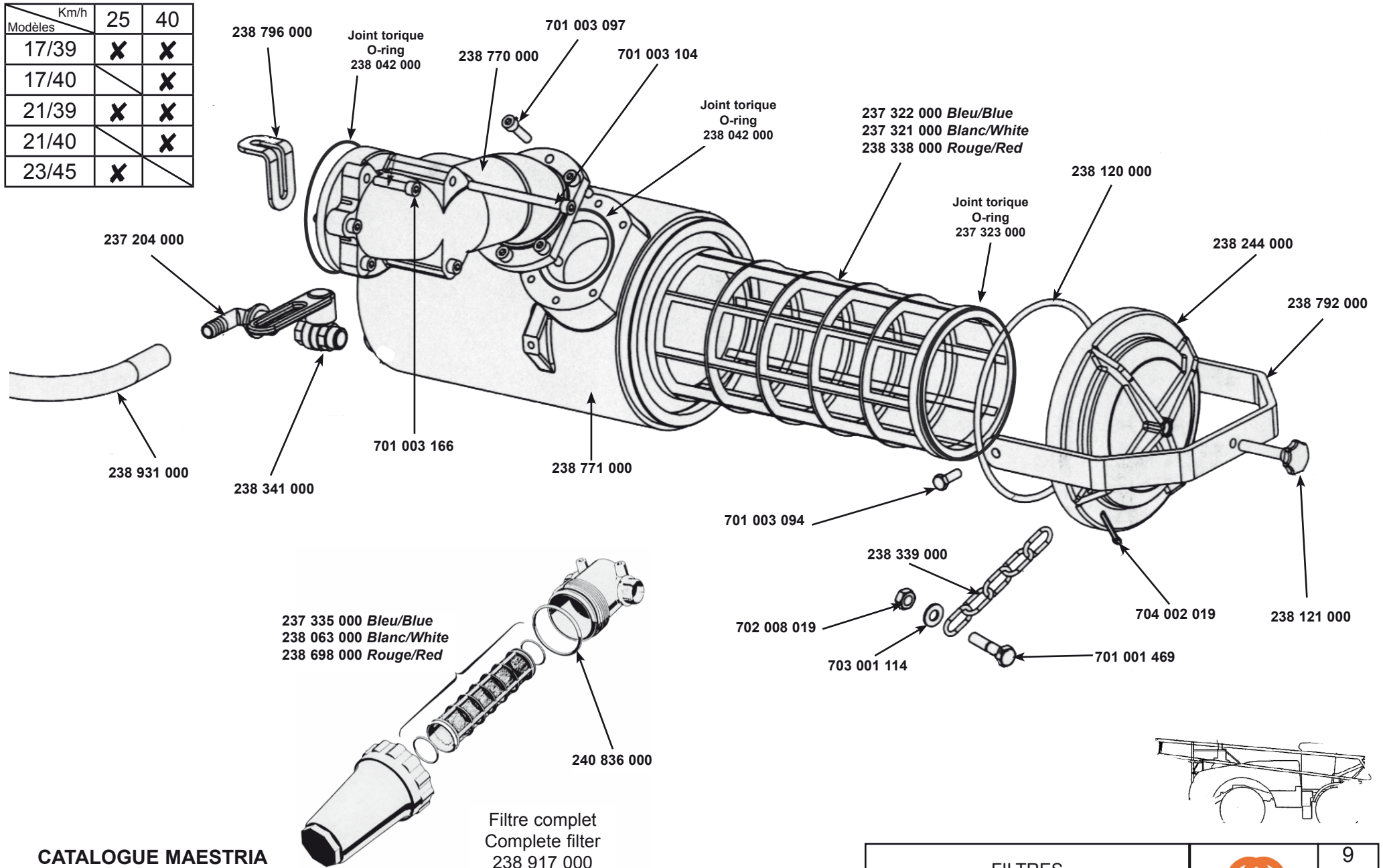
Sphère
238 901 000



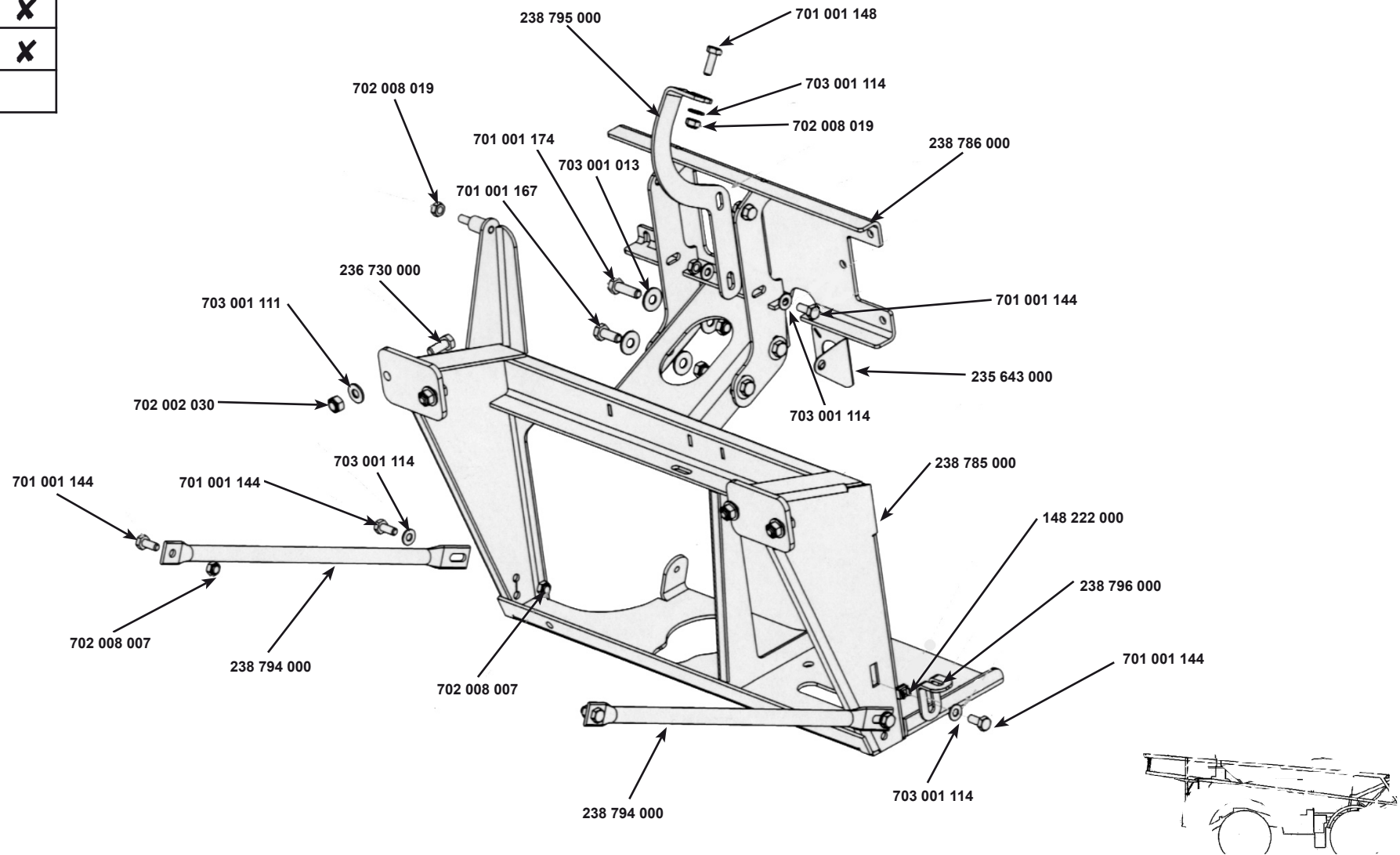
Modèles \ Km/h	25	40
17/39	X	X
17/40		X
21/39	X	X
21/40		X
23/45	X	



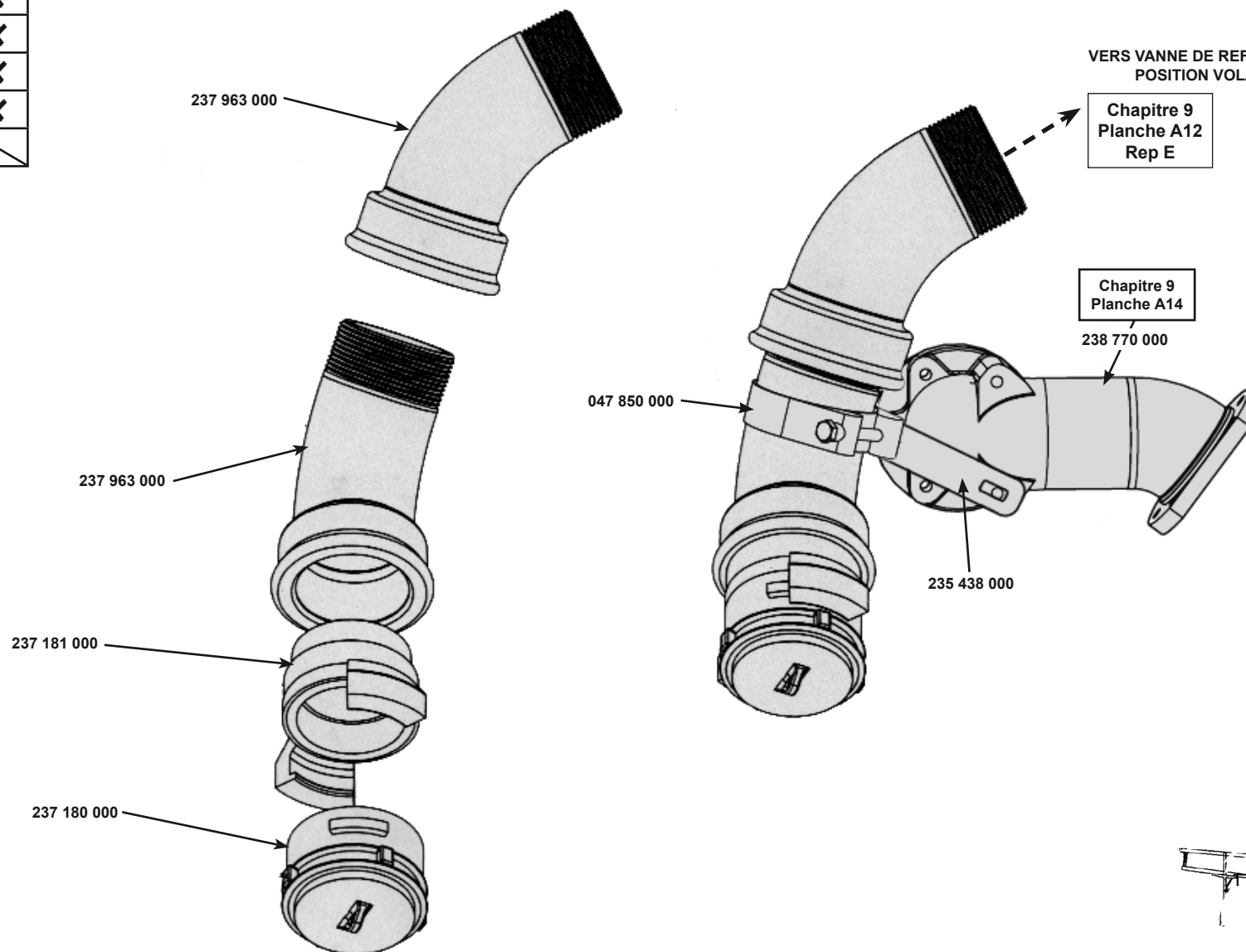
Km/h	25	40
Modèles		
17/39	X	X
17/40		X
21/39	X	X
21/40		X
23/45	X	



Km/h Modèles	25	40
17/39	X	X
21/39	X	X
23/45	X	



Modèles \ Km/h	25	40
17/39	X	X
17/40		X
21/39	X	X
21/40		X
23/45	X	



**CATALOGUE MAESTRIA
RAMPE AV 2004**

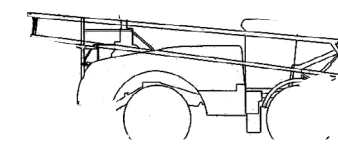
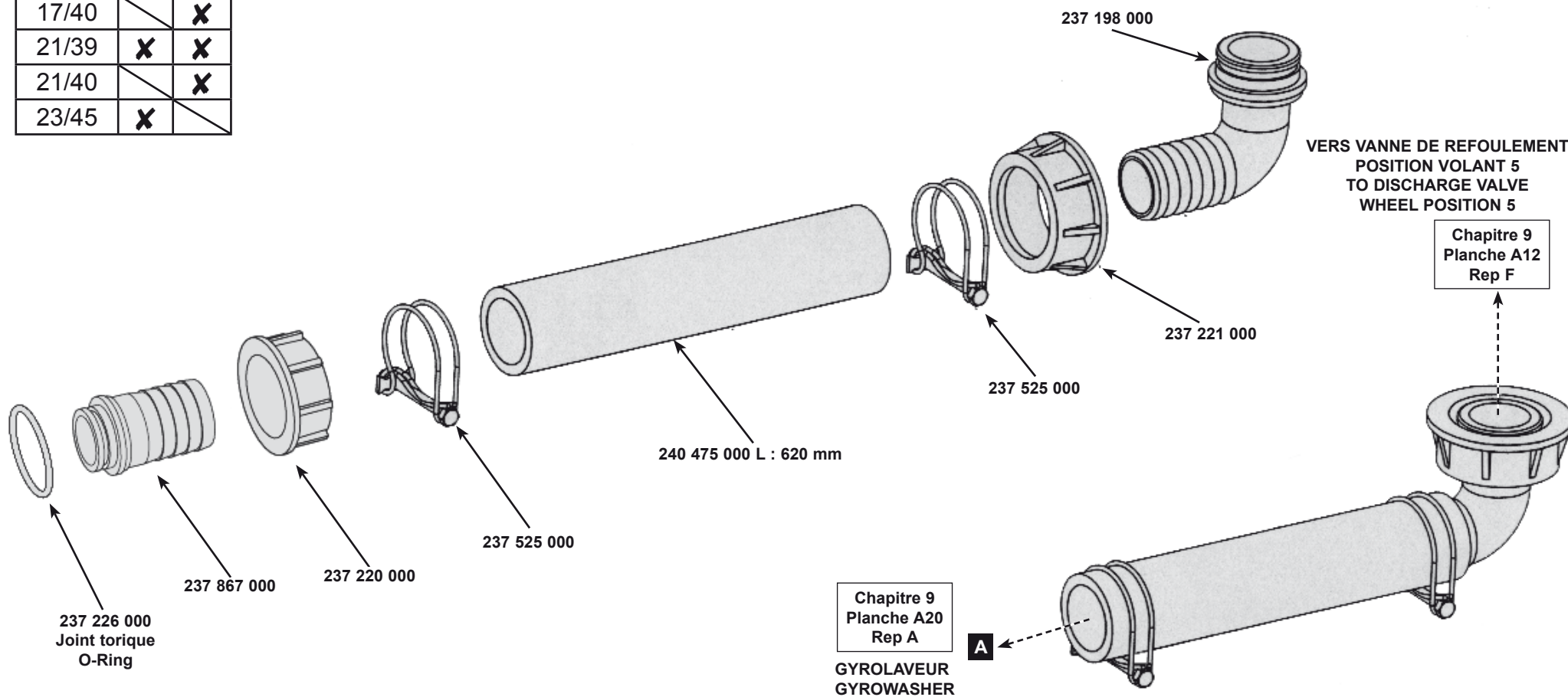
Correctif mars 2009/March 2009 correction

TRANSFERT



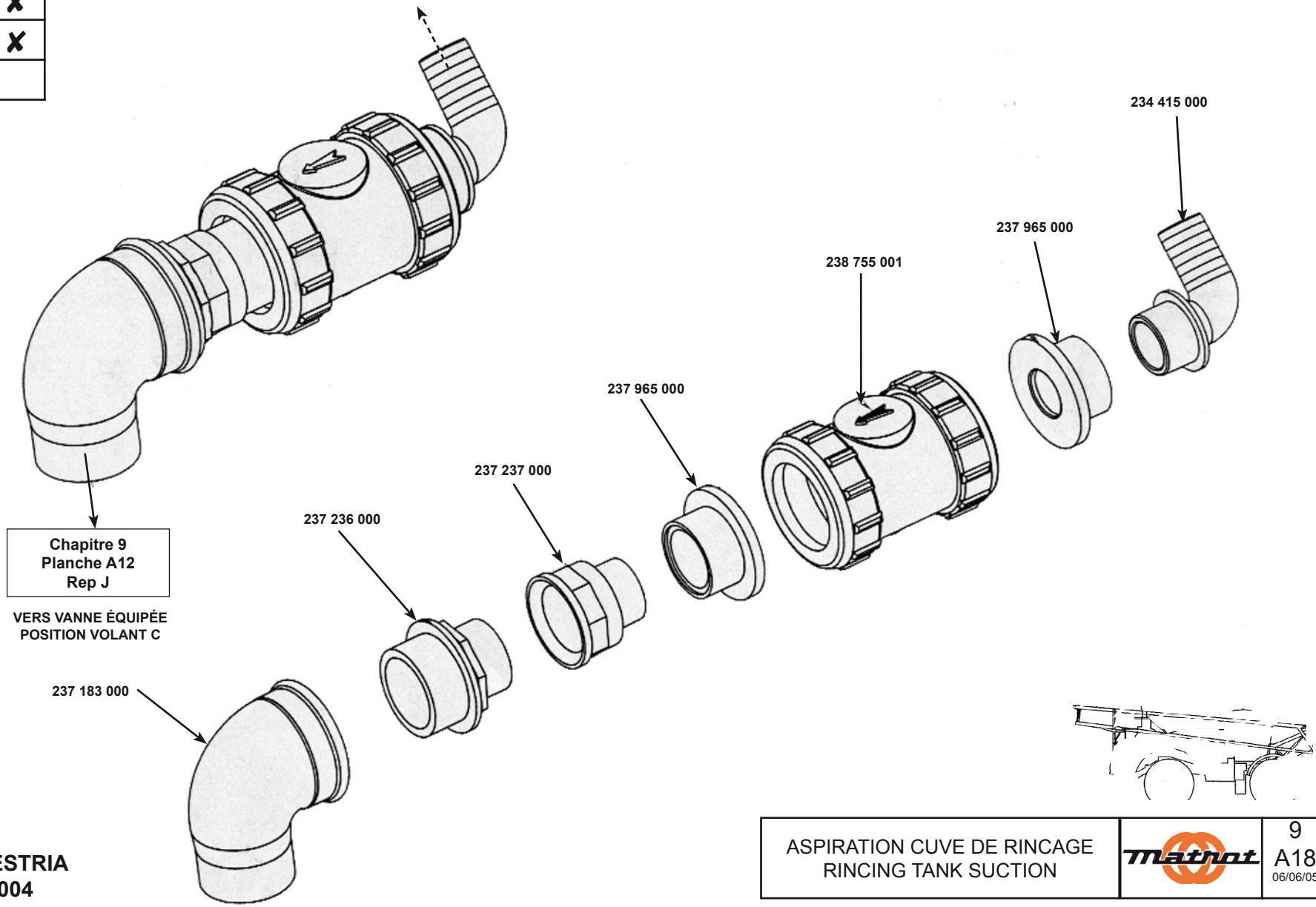
9
A16
06/06/05

Modèles \ Km/h	25	40
17/39	X	X
17/40		X
21/39	X	X
21/40		X
23/45	X	

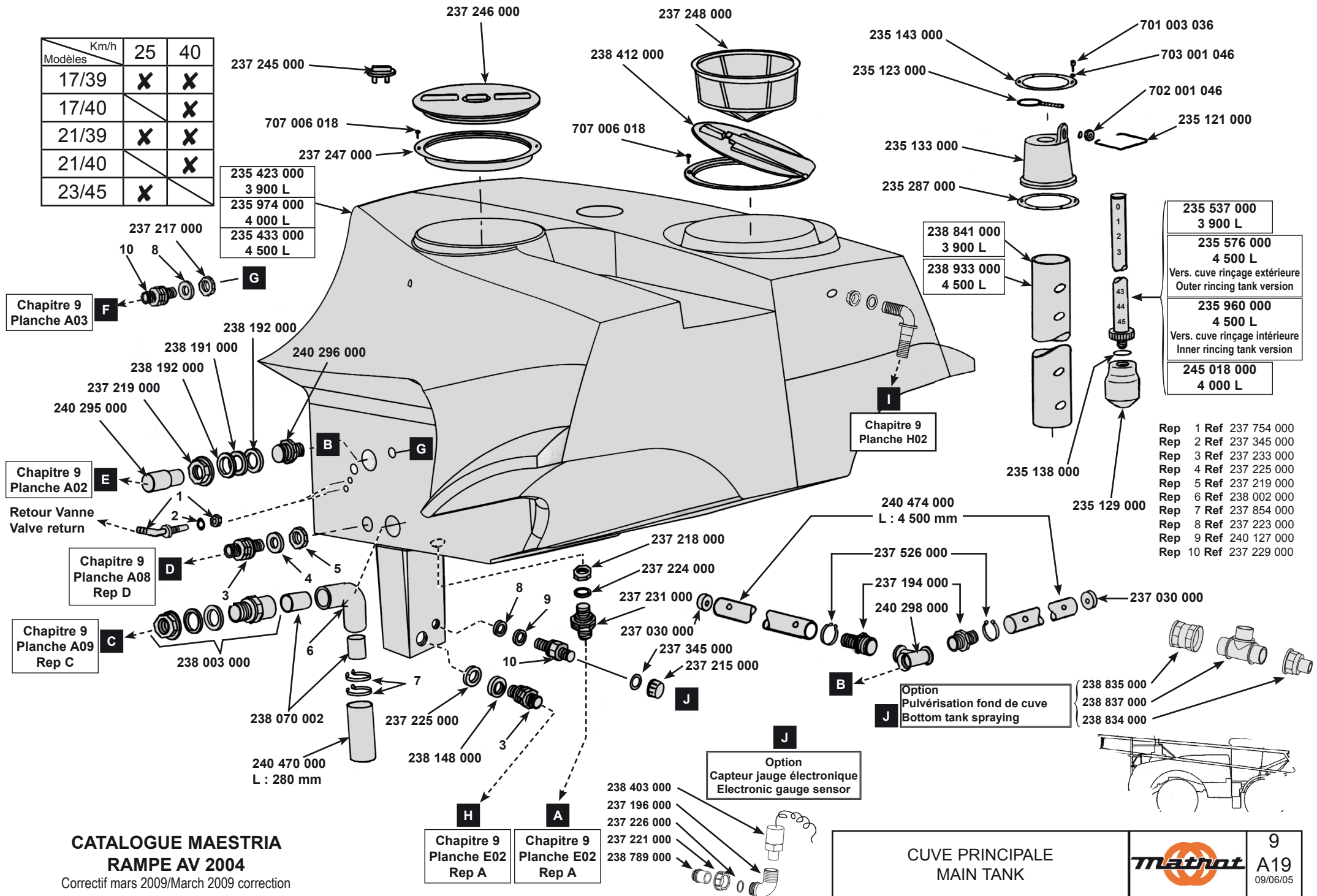


Km/h Modèles	25	40
17/39	X	X
21/39	X	X
23/45	X	

Chapitre 9
Planche C01
Rep A



Km/h	25	40
17/39	X	X
17/40		X
21/39	X	X
21/40		X
23/45	X	



- 235 423 000
3 900 L
- 235 974 000
4 000 L
- 235 433 000
4 500 L

- 238 841 000
3 900 L
- 238 933 000
4 500 L

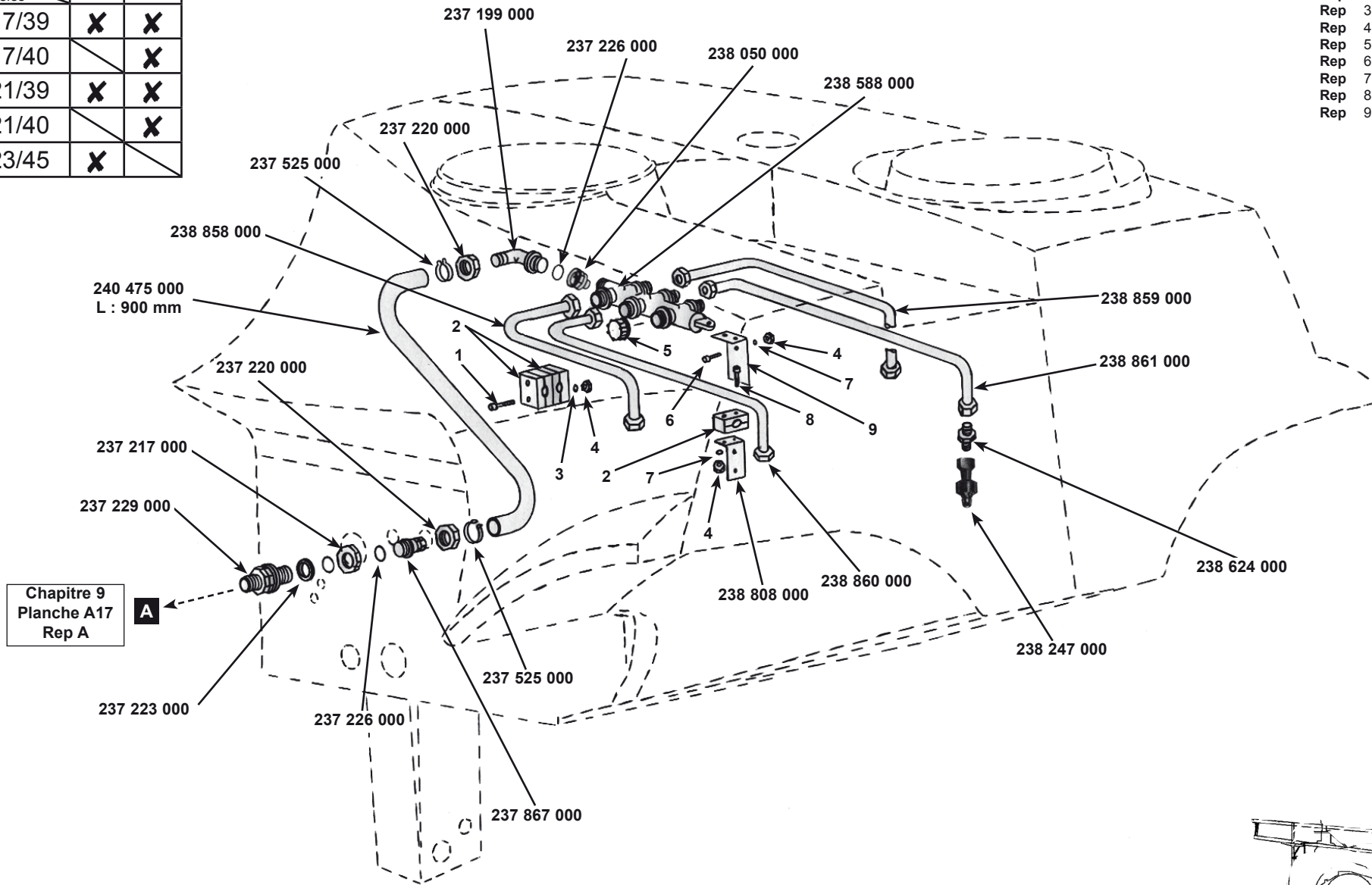
- 235 537 000
3 900 L
- 235 576 000
4 500 L
Vers. cuve rinçage extérieure
Outer rinsing tank version
- 235 960 000
4 500 L
Vers. cuve rinçage intérieure
Inner rinsing tank version
- 245 018 000
4 000 L

- Rep 1 Ref 237 754 000
- Rep 2 Ref 237 345 000
- Rep 3 Ref 237 233 000
- Rep 4 Ref 237 225 000
- Rep 5 Ref 237 219 000
- Rep 6 Ref 238 002 000
- Rep 7 Ref 237 854 000
- Rep 8 Ref 237 223 000
- Rep 9 Ref 240 127 000
- Rep 10 Ref 237 229 000

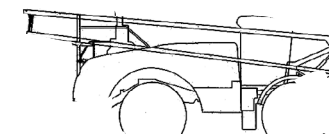
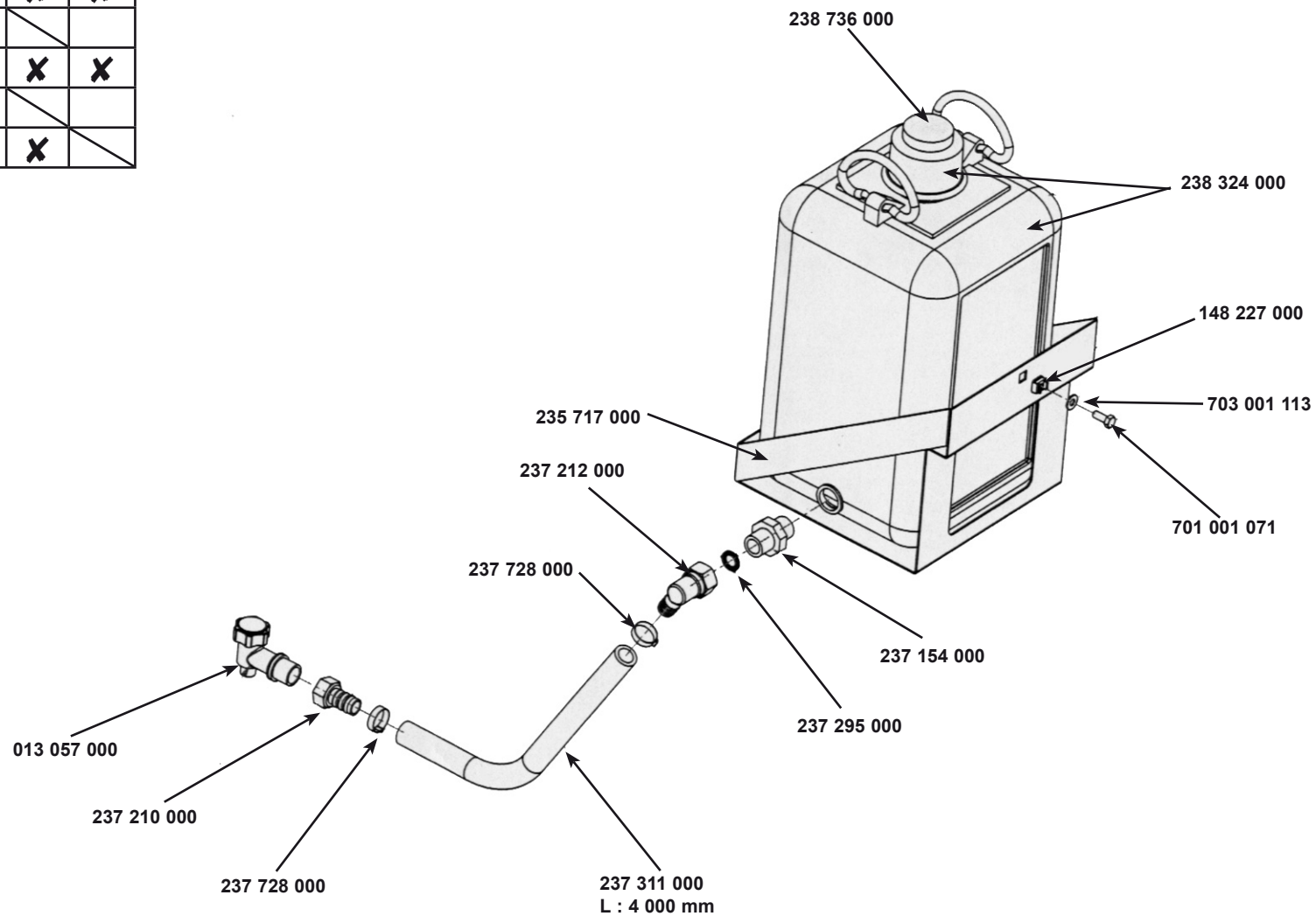
CUVE PRINCIPALE
MAIN TANK

Modèles \ Km/h	25	40
17/39	X	X
17/40		X
21/39	X	X
21/40		X
23/45	X	

- Rep 1 Ref 701 003 082
- Rep 2 Ref 161 262 000
- Rep 3 Ref 703 002 029
- Rep 4 Ref 702 008 011
- Rep 5 Ref 238 587 000
- Rep 6 Ref 701 003 069
- Rep 7 Ref 703 001 048
- Rep 8 Ref 701 003 073
- Rep 9 Ref 238 808 000



Modèles \ Km/h	25	40
17/39	X	X
17/40		
21/39	X	X
21/40		
23/45	X	

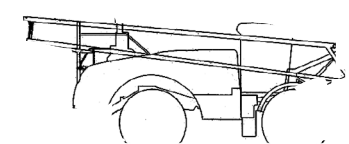
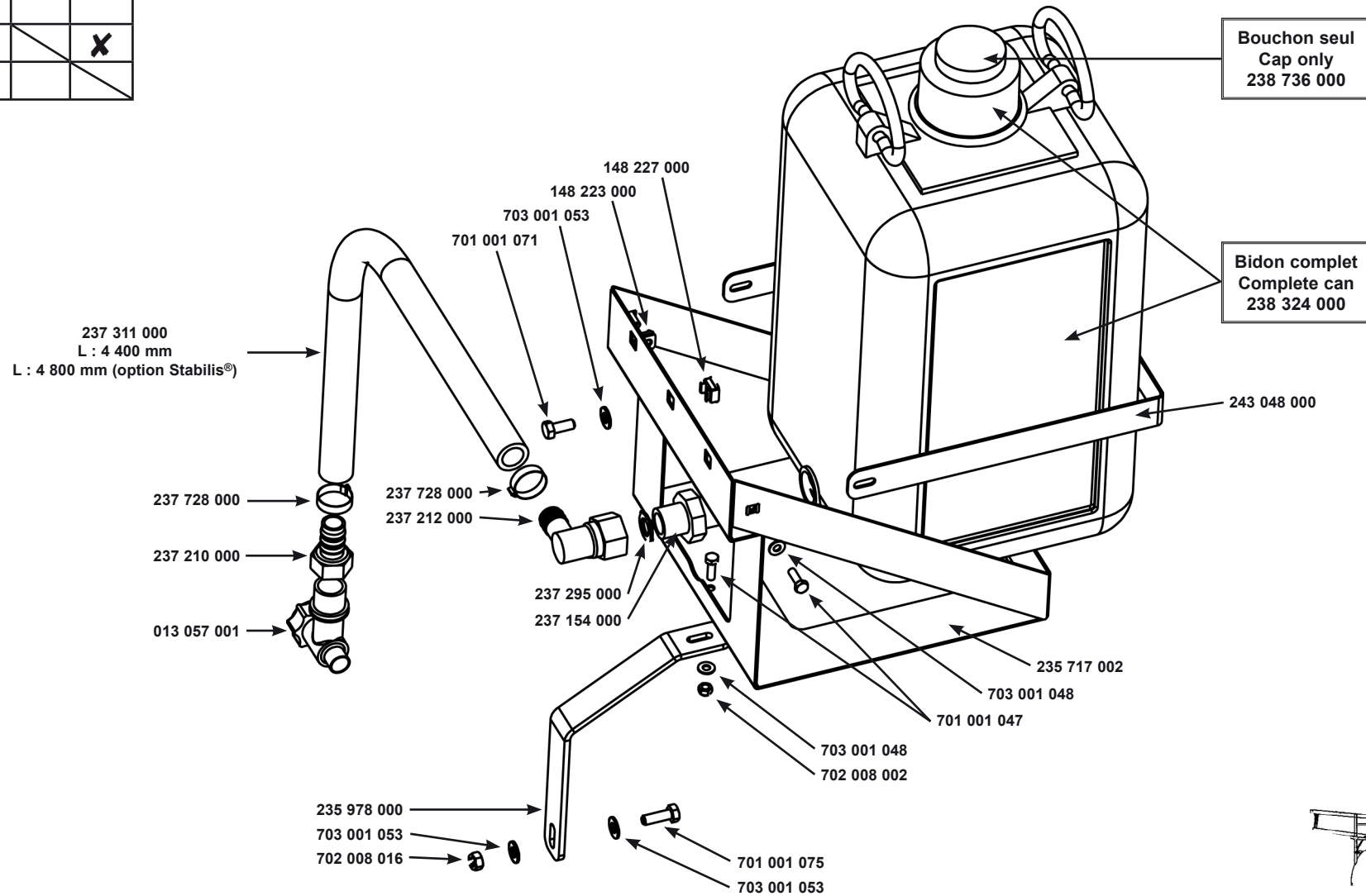


**CATALOGUE MAESTRIA
RAMPE AV 2004**

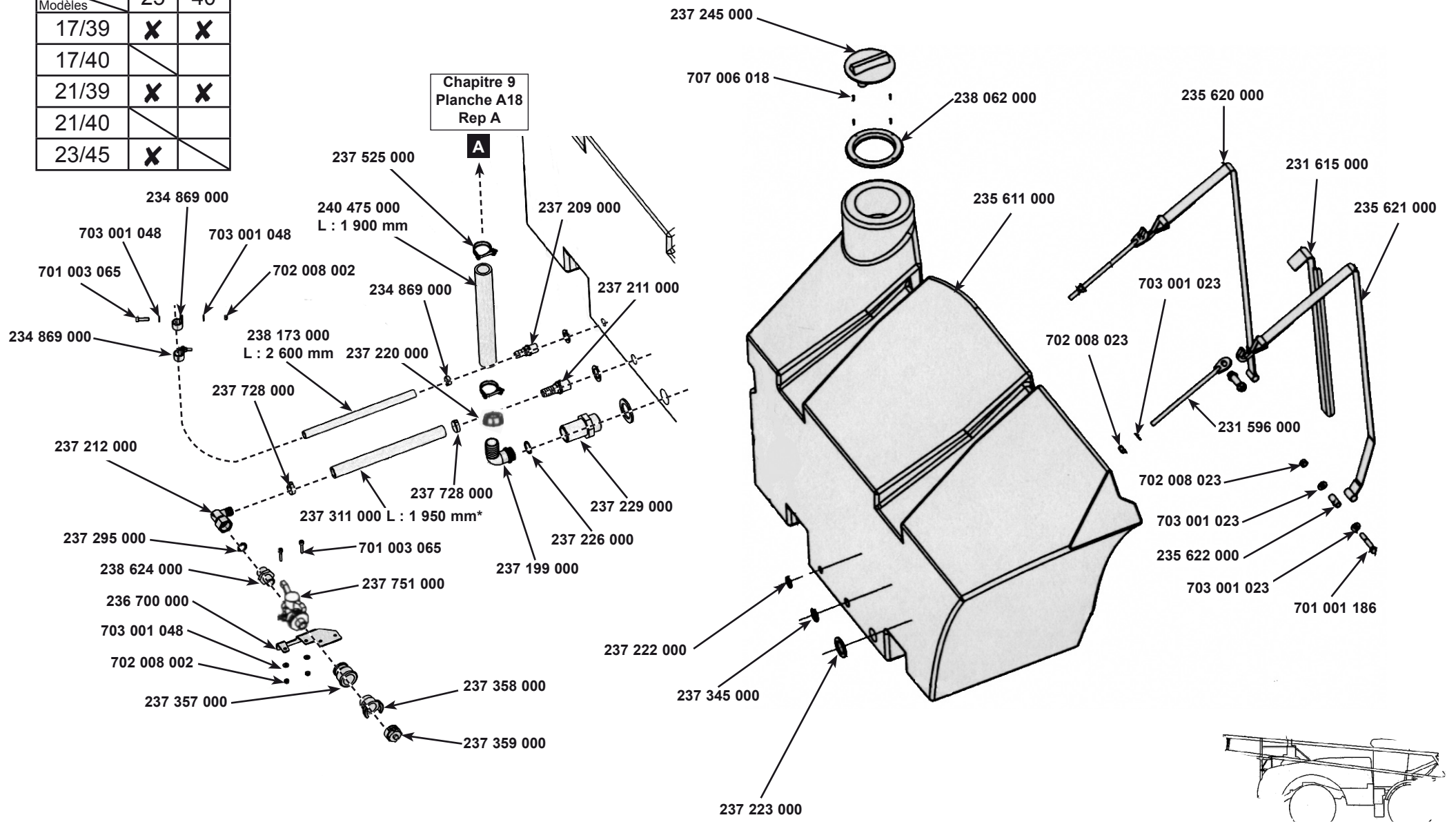
Correctif mars 2009/March 2009 correction

BIDON DE LAVE MAIN ÉQUIPÉ WASH-HAND CAN		9 B01 25/05/05
--	---	----------------------

Modèles \ Km/h	25	40
17/39		
17/40		X
21/39		
21/40		X
23/45		



Modèles \ Km/h	25	40
17/39	X	X
17/40		
21/39	X	X
21/40		
23/45	X	



**CATALOGUE MAESTRIA
RAMPE AV 2004**

Correctif mars 2009/March 2009 correction

* Option commande de rinçage depuis cabine, remplacer réf 237 311 000 L : 1 950 mm par réf 237 311 000 L : 650 mm - 1 400 mm - 400 mm - 4 800 mm - 150 mm - 100 mm.

* Rinsing command from cab option, substitute item 237 311 000 L : 1 950 mm by item 237 311 000 L : 650 mm - 1 400 mm - 400 mm - 4 800 mm - 150 mm - 100 mm.

CUVE DE RINÇAGE
RINSING TANK

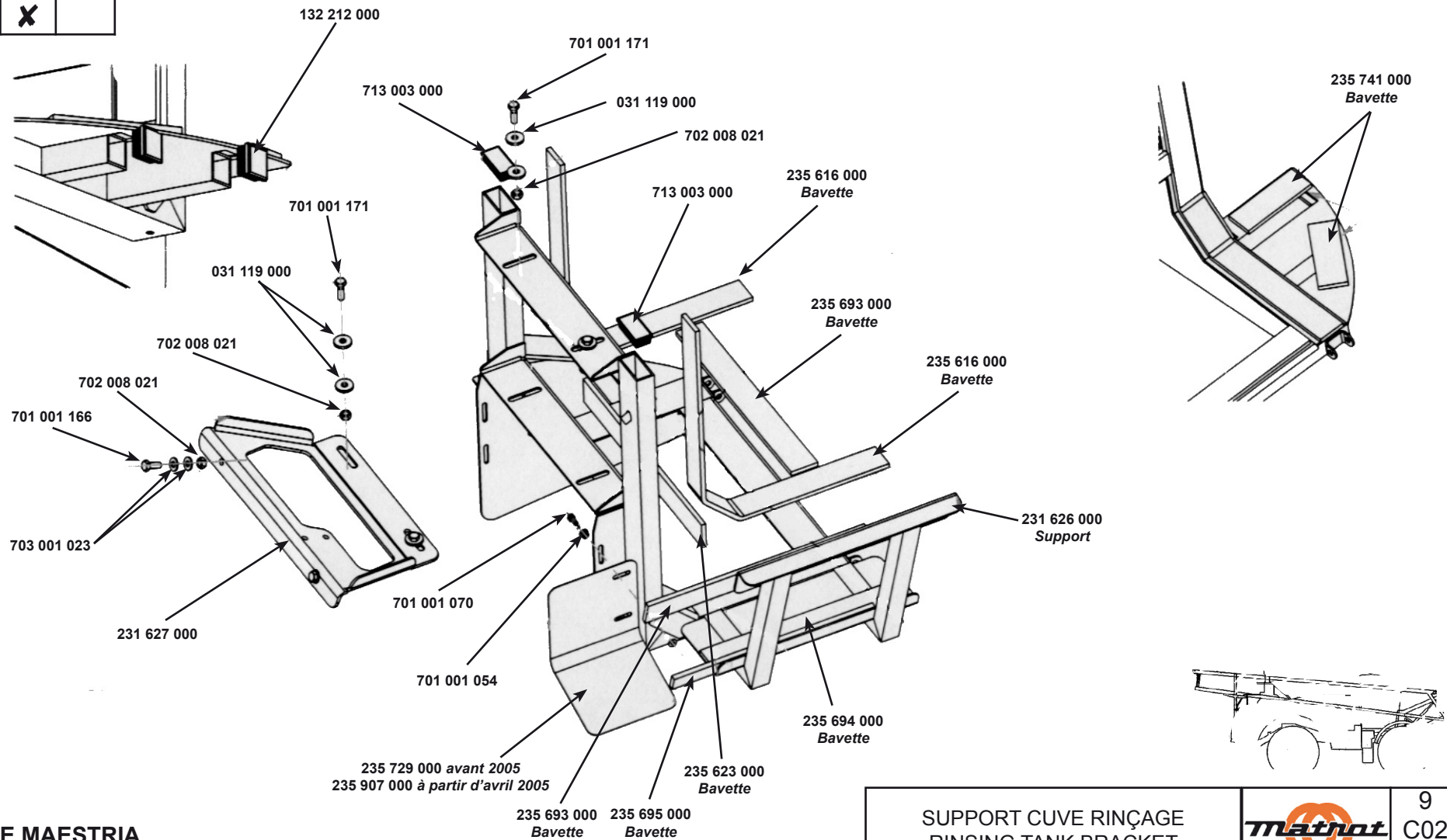


9

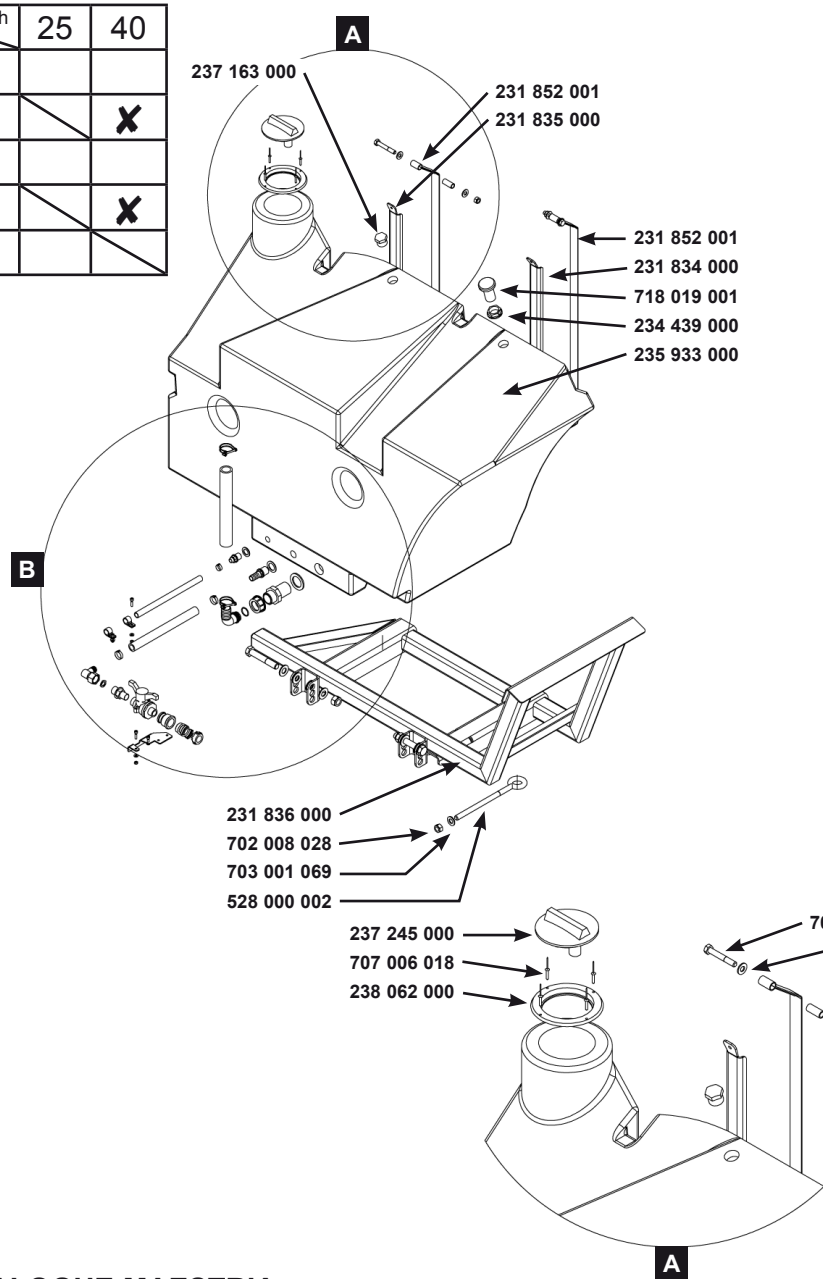
C01

24/05/05

Km/h	25	40
17/39	X	X
21/39	X	X
23/45	X	

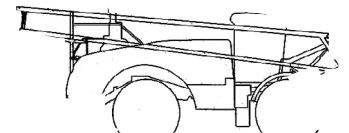
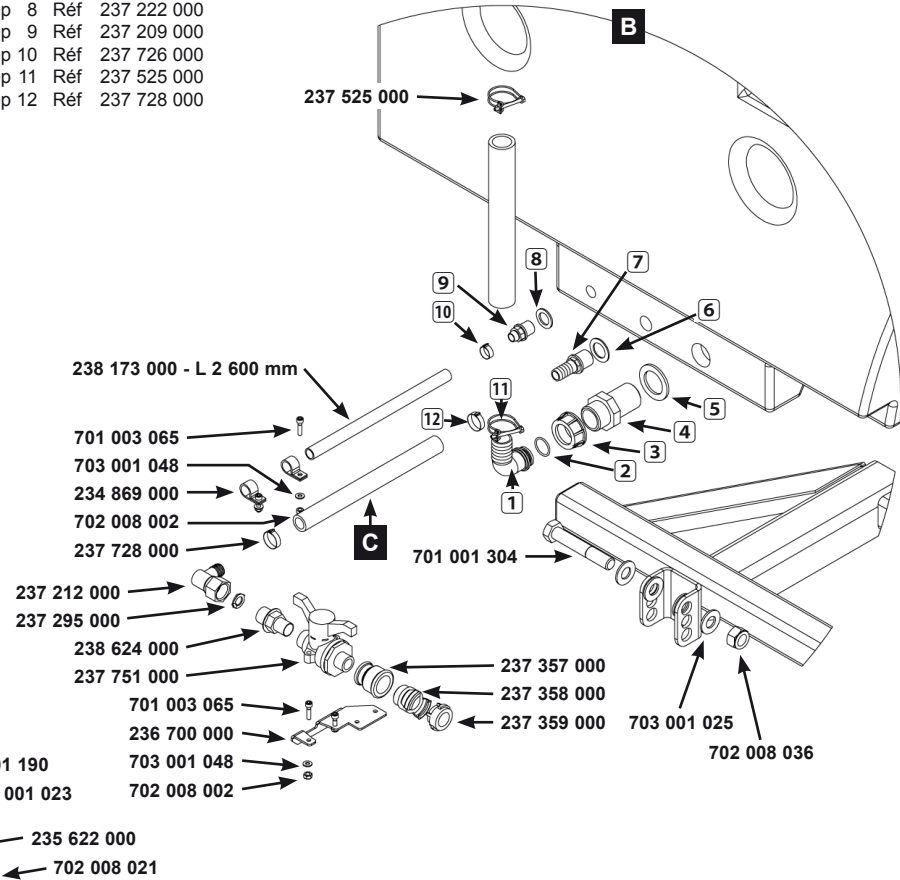


Km/h	25	40
17/39		
17/40		X
21/39		
21/40		X
23/45		

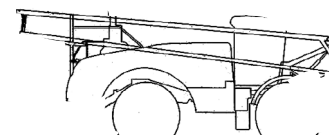
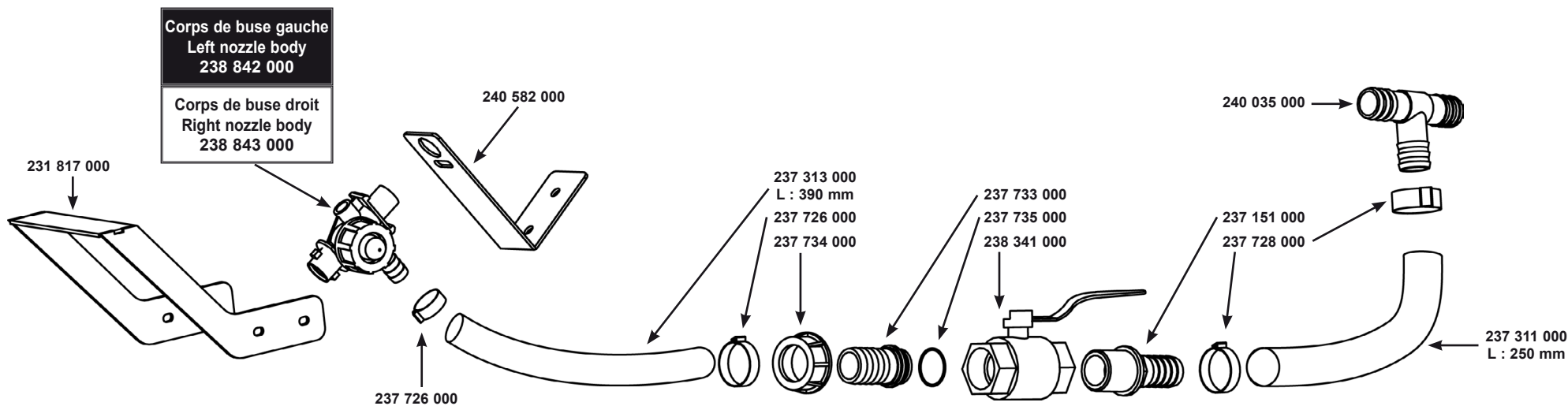


- Rep 1 Réf 237 199 000
- Rep 2 Réf 237 226 000
- Rep 3 Réf 237 220 000
- Rep 4 Réf 237 229 000
- Rep 5 Réf 237 223 000
- Rep 6 Réf 237 345 000
- Rep 7 Réf 237 211 000
- Rep 8 Réf 237 222 000
- Rep 9 Réf 237 209 000
- Rep 10 Réf 237 726 000
- Rep 11 Réf 237 525 000
- Rep 12 Réf 237 728 000

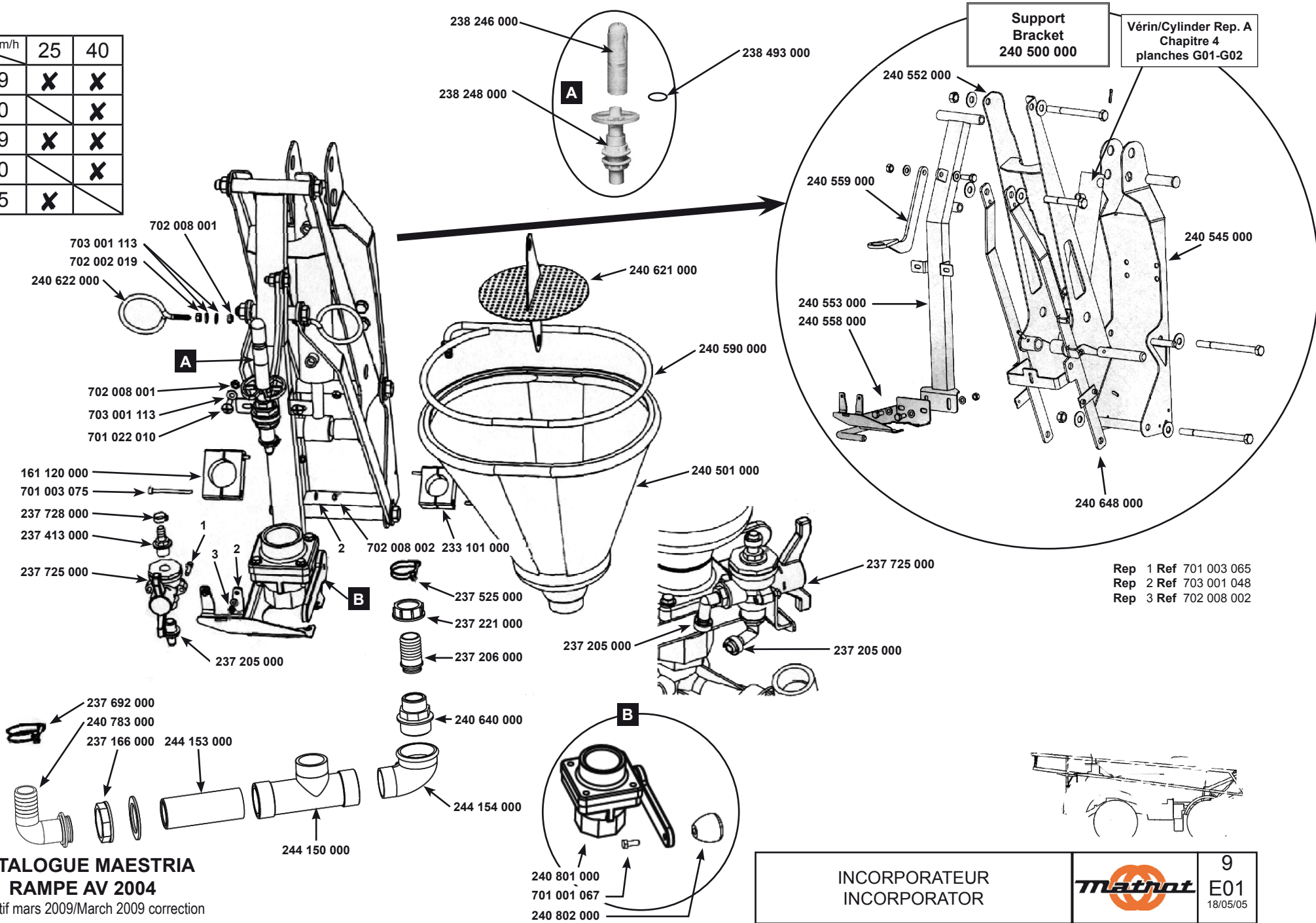
C Réf 237 311 000 L : 1 950 mm - Option commande de rinçage depuis cabine, remplacer la précédente référence par réf 237 311 000 L : 650 mm - 1 400 mm - 400 mm - 4 800 mm - 150 mm - 100 mm.
 Item 237 311 000 L : 1 950 mm - Rinsing command from cab option, substitute the previous item by item 237 311 000 L : 650 mm - 1 400 mm - 400 mm - 4 800 mm - 150 mm - 100 mm.



Km/h Modèles	25	40
17/39	X	X
17/40		X
21/39	X	X
21/40		X
23/45	X	




Km/h	25	40
17/39	X	X
17/40		X
21/39	X	X
21/40		X
23/45	X	



Support Bracket
240 500 000

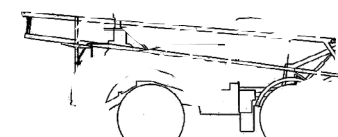
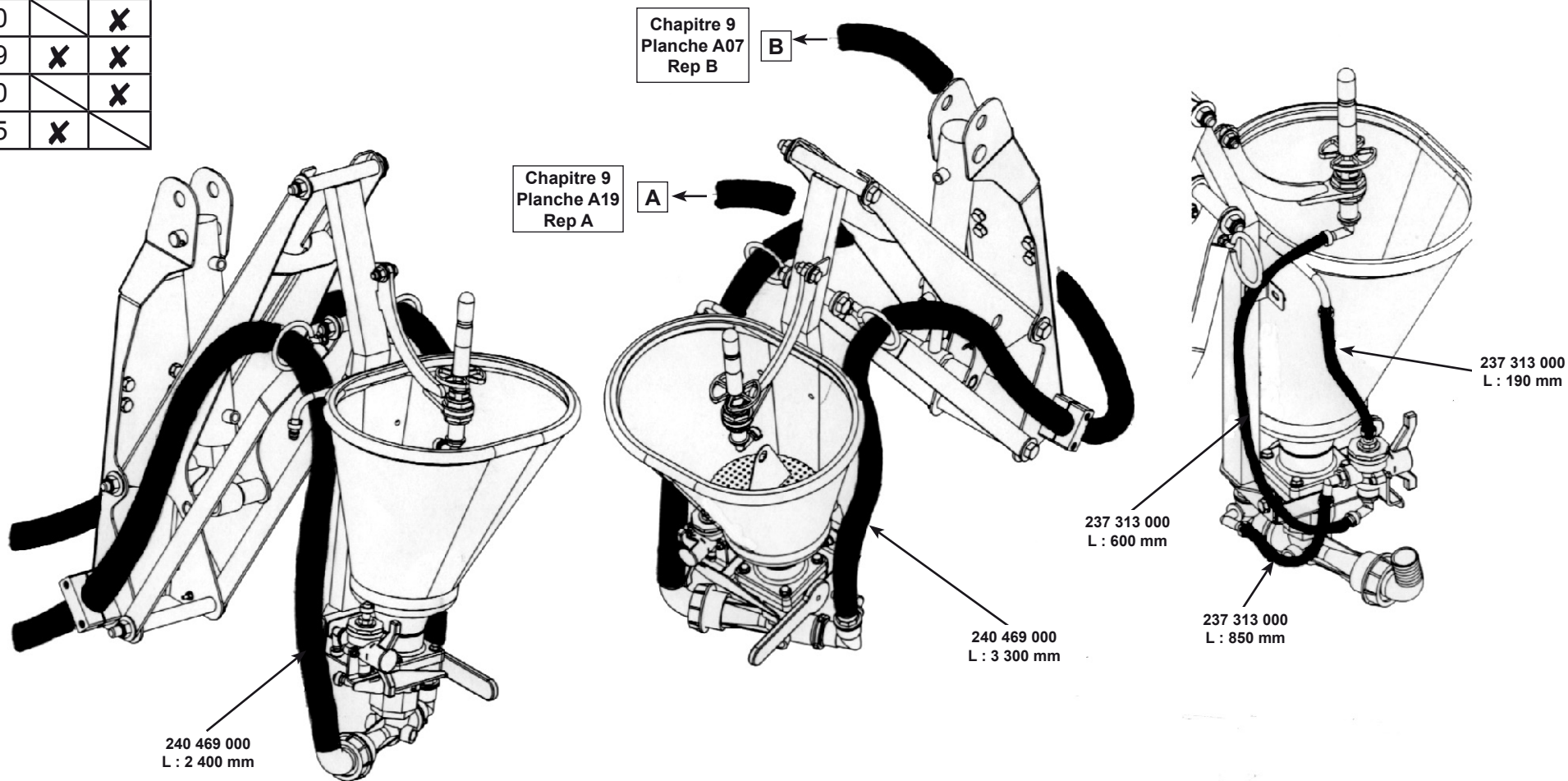
Vérin/Cylinder Rep. A
Chapitre 4
planches G01-G02

Rep 1 Ref 701 003 065
Rep 2 Ref 703 001 048
Rep 3 Ref 702 008 002

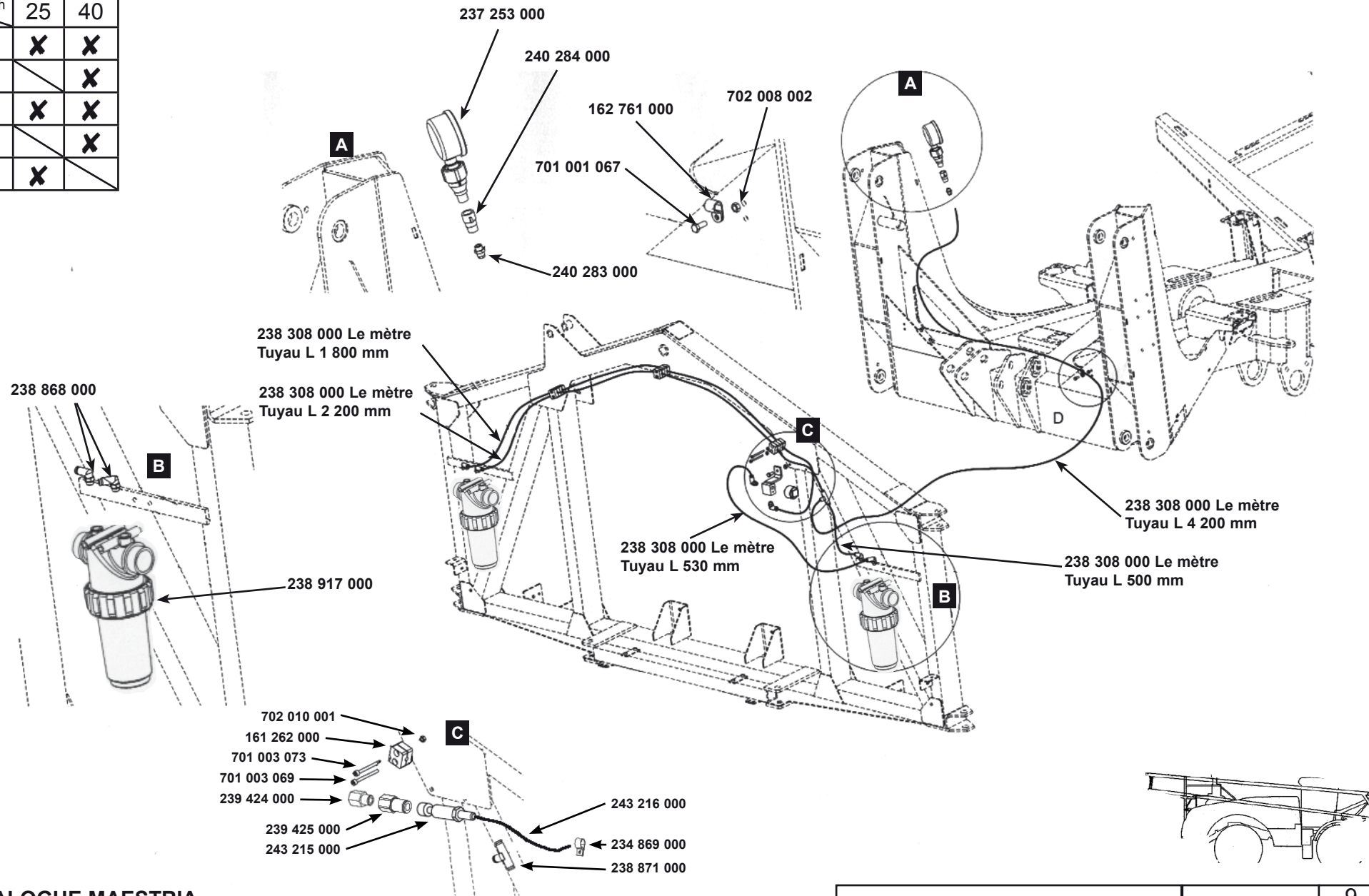
INCORPORATEUR INCORPORATOR		9 E01 18/05/05
-------------------------------	---	----------------------

CATALOGUE MAESTRIA
RAMPE AV 2004
Correctif mars 2009/March 2009 correction

Modèles \ Km/h	25	40
17/39	X	X
17/40		X
21/39	X	X
21/40		X
23/45	X	



Modèles \ Km/h	25	40
17/39	X	X
17/40		X
21/39	X	X
21/40		X
23/45	X	



Km/h	25	40
Modèles		
17/39	X	X
17/40		X
21/39	X	X
21/40		X
23/45	X	

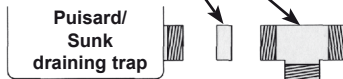
Configuration sans jauge électronique
Configuration without electronic gauge

Joint plat/Flat ring
237 345 000

Bouchon/Cap
237 215 000

238 837 000

238 835 000



Jauge électronique
Electronic gauge
238 403 000

Débitmètre
Flow meter

237 692 000

237 867 000
Rampe/Boom 24/32 m

237 206 000
Rampe/Boom 32/50 m

237 226 000
Rampe/Boom 24/32 m

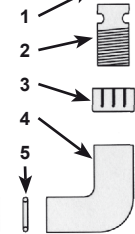
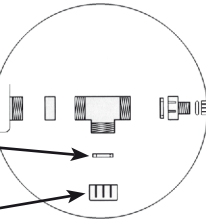
237 227 000
Rampe/Boom 32/50 m

238 837 000
Rampe/Boom 24/32 m

238 788 000
Rampe/Boom 32/50 m

237 220 000
Rampe/Boom 24/32 m

237 221 000
Rampe/Boom 32/50 m



Joint torique/O-ring
237 345 000

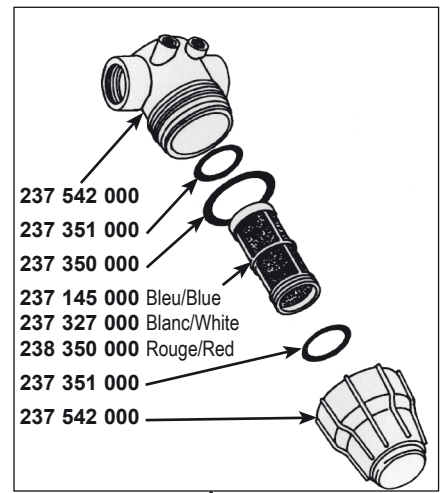
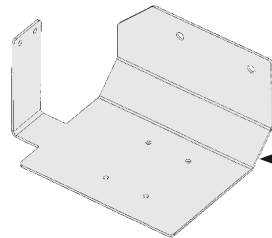
238 834 000

237 311 000
L 900 mm

237 728 000

237 151 000

237 210 000



Joint torique/O-Ring
240 579 000

Écrou/Nut
240 578 000

240 577 000

237 205 000

237 726 000

237 313 000
L 620 mm

238 834 000

237 345 000
Joint plat/Flat ring

237 543 000

234 966 000

232 678 000

176 358 000

237 726 000

237 413 000

237 725 000

237 313 000
L 2 000 mm

237 313 000
L 5 000 mm

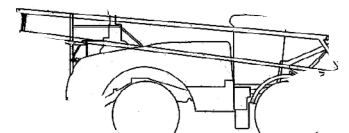
Vers jets arrière
To rear nozzles

Chapitre 9
Planches
D01 & D02

237 726 000

237 205 000

- Rep 1 Ref 237 226 000 Joint torique/O-ring
- Rep 2 Ref 238 789 000
- Rep 3 Ref 237 220 000
- Rep 4 Ref 238 790 000
- Rep 5 Ref 237 227 000 Joint torique/O-ring



**CATALOGUE MAESTRIA
RAMPE AV 2004**

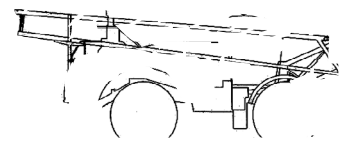
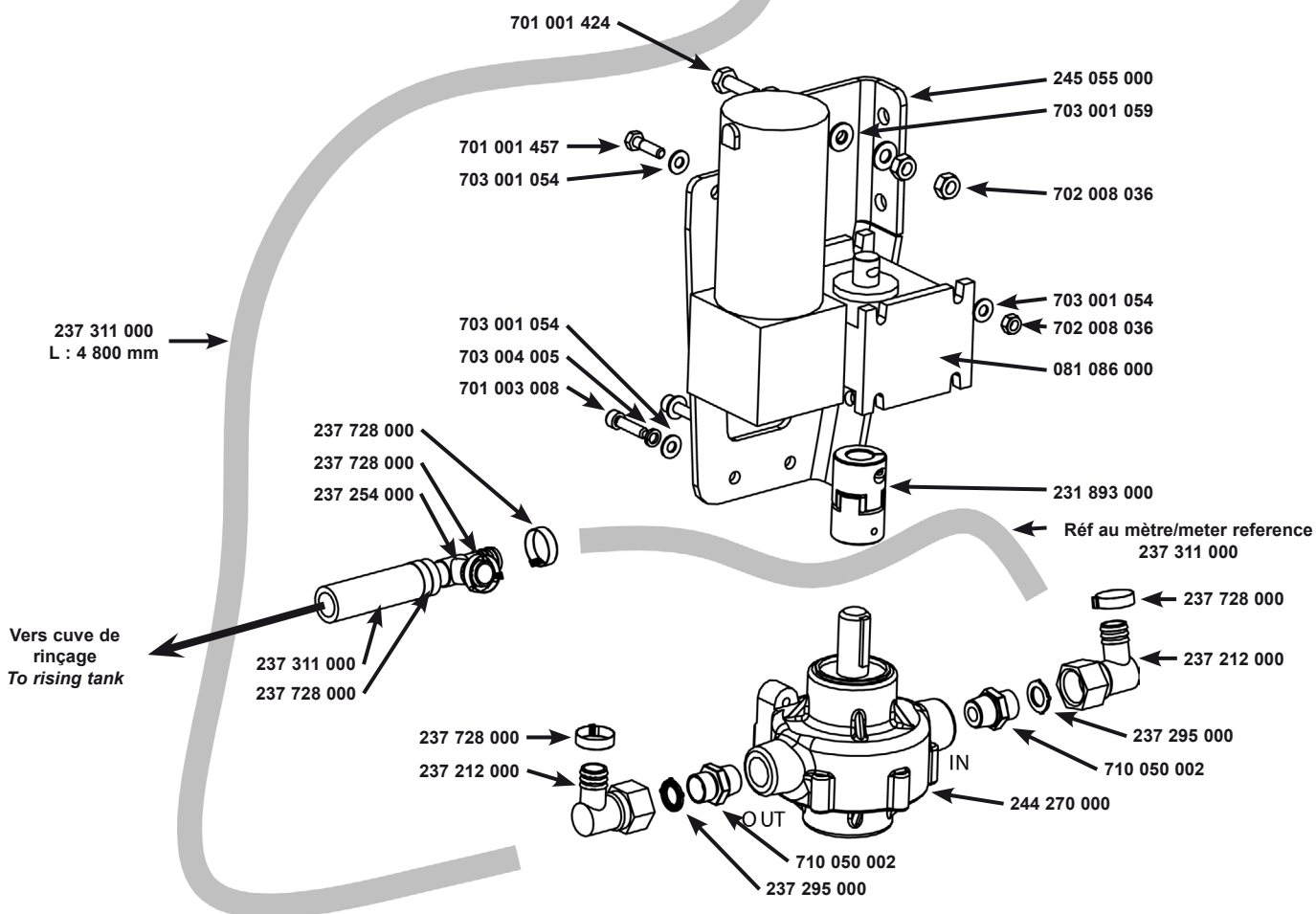
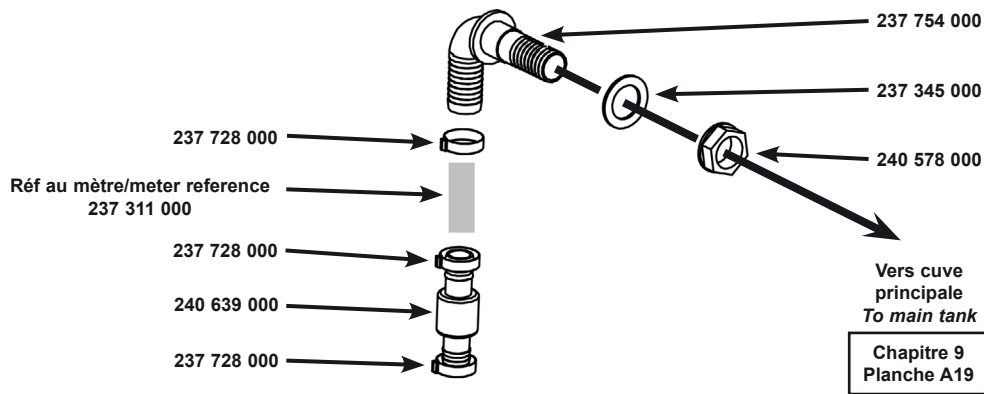
Correctif mars 2009/March 2009 correction

OPTION POMPE VIDANGE DE CUVE
EMPTYING TANK PUMP

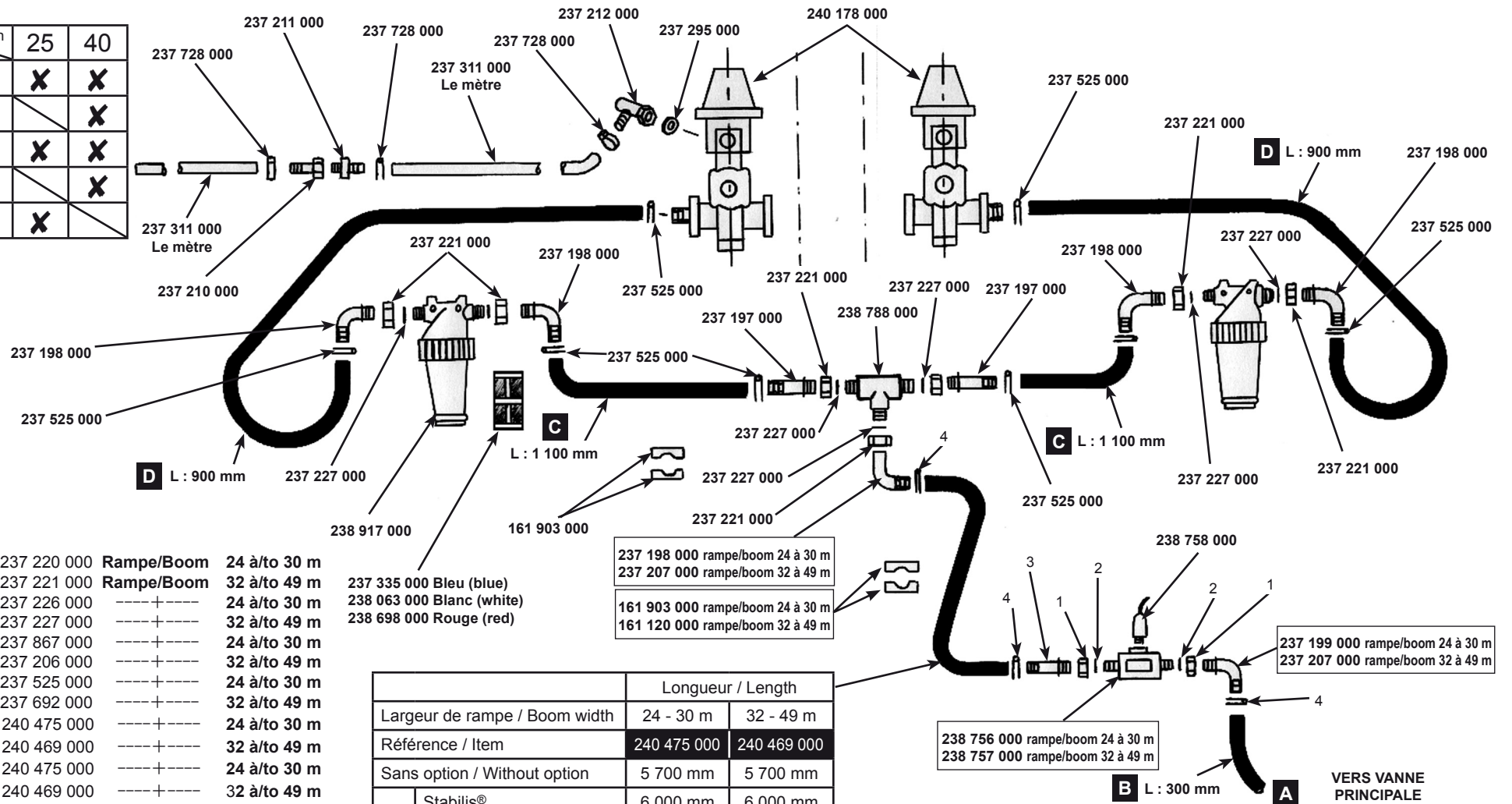


9
H01
20/10/05

Modèles \ Km/h	25	40
17/39	X	X
17/40		X
21/39	X	X
21/40		X
23/45	X	



Modèles	25	40
17/39	X	X
17/40		X
21/39	X	X
21/40		X
23/45	X	



Rep	Ref	Rampe/Boom	24 à/to 30 m	32 à/to 49 m
Rep 1	Ref 237 220 000	Rampe/Boom	24 à/to 30 m	32 à/to 49 m
Rep 1	Ref 237 221 000	Rampe/Boom	32 à/to 49 m	32 à/to 49 m
Rep 2	Ref 237 226 000	----+----	24 à/to 30 m	32 à/to 49 m
Rep 2	Ref 237 227 000	----+----	32 à/to 49 m	32 à/to 49 m
Rep 3	Ref 237 867 000	----+----	24 à/to 30 m	32 à/to 49 m
Rep 3	Ref 237 206 000	----+----	32 à/to 49 m	32 à/to 49 m
Rep 4	Ref 237 525 000	----+----	24 à/to 30 m	32 à/to 49 m
Rep 4	Ref 237 692 000	----+----	32 à/to 49 m	32 à/to 49 m
Rep B	Ref 240 475 000	----+----	24 à/to 30 m	32 à/to 49 m
Rep B	Ref 240 469 000	----+----	32 à/to 49 m	32 à/to 49 m
Rep C	Ref 240 475 000	----+----	24 à/to 30 m	32 à/to 49 m
Rep C	Ref 240 469 000	----+----	32 à/to 49 m	32 à/to 49 m
Rep D	Ref 240 475 000	----+----	24 à/to 30 m	32 à/to 49 m
Rep D	Ref 240 469 000	----+----	32 à/to 49 m	32 à/to 49 m

237 335 000 Bleu (blue)
238 063 000 Blanc (white)
238 698 000 Rouge (red)

237 198 000 rampe/boom 24 à 30 m
237 207 000 rampe/boom 32 à 49 m
161 903 000 rampe/boom 24 à 30 m
161 120 000 rampe/boom 32 à 49 m

238 756 000 rampe/boom 24 à 30 m
238 757 000 rampe/boom 32 à 49 m

237 199 000 rampe/boom 24 à 30 m
237 207 000 rampe/boom 32 à 49 m

		Longueur / Length	
Largeur de rampe / Boom width		24 - 30 m	32 - 49 m
Référence / Item		240 475 000	240 469 000
Sans option / Without option		5 700 mm	5 700 mm
Option	Stabilis®	6 000 mm	6 000 mm
	Jets arrières Rear sprays	4 300 mm + 1 300 mm	4 300 mm + 1 300 m
	Stabilis® + jets arrières Stabilis® + rear sprays	4 300 mm + 1 530 mm	4 300 mm + 1 530 mm
	Pompe vidange de cuve principale Emptying main tank pump	4 300 mm + 1 300 mm	4 300 mm + 1 300 mm
	Pompe vidange de cuve principale + Stabilis® Emptying main tank pump + Stabilis®	4 300 mm + 1 530 mm	4 300 mm + 1 530 mm

ALIMENTATION RAMPE
BOOM SUPPLY



9
G01
07/06/05

CATALOGUE MAESTRIA
RAMPE AV 2004

Correctif mars 2009/March 2009 correction