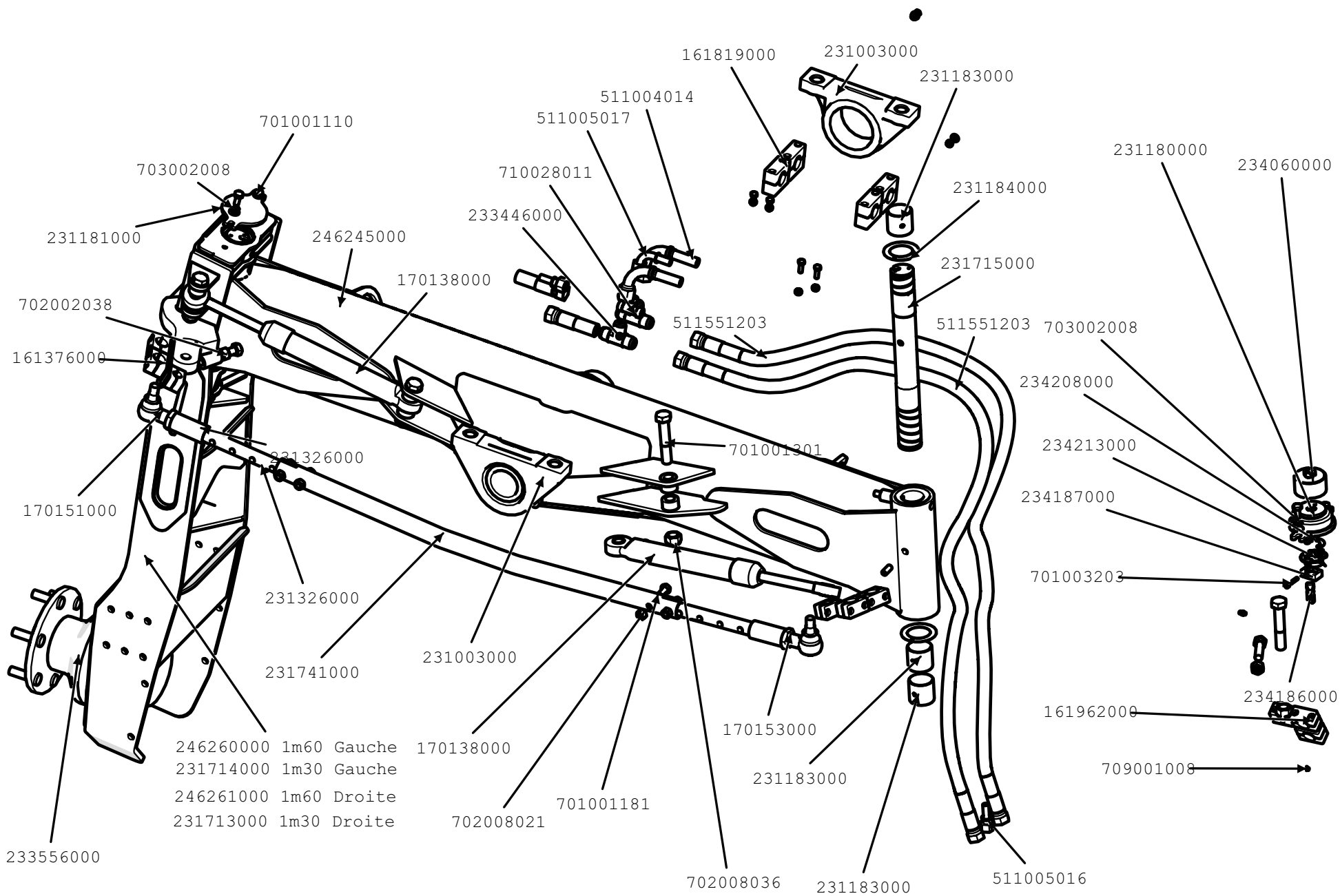

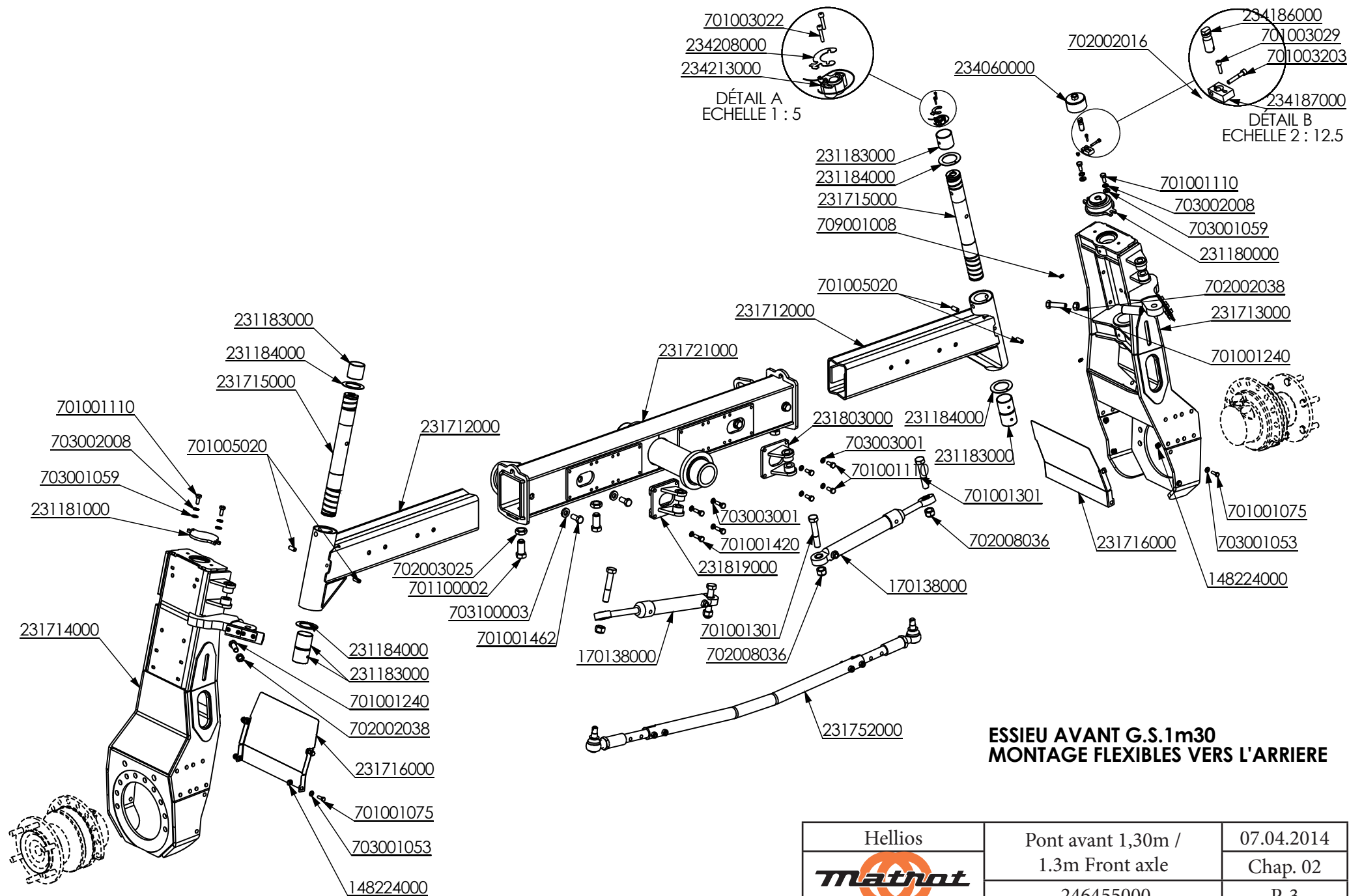
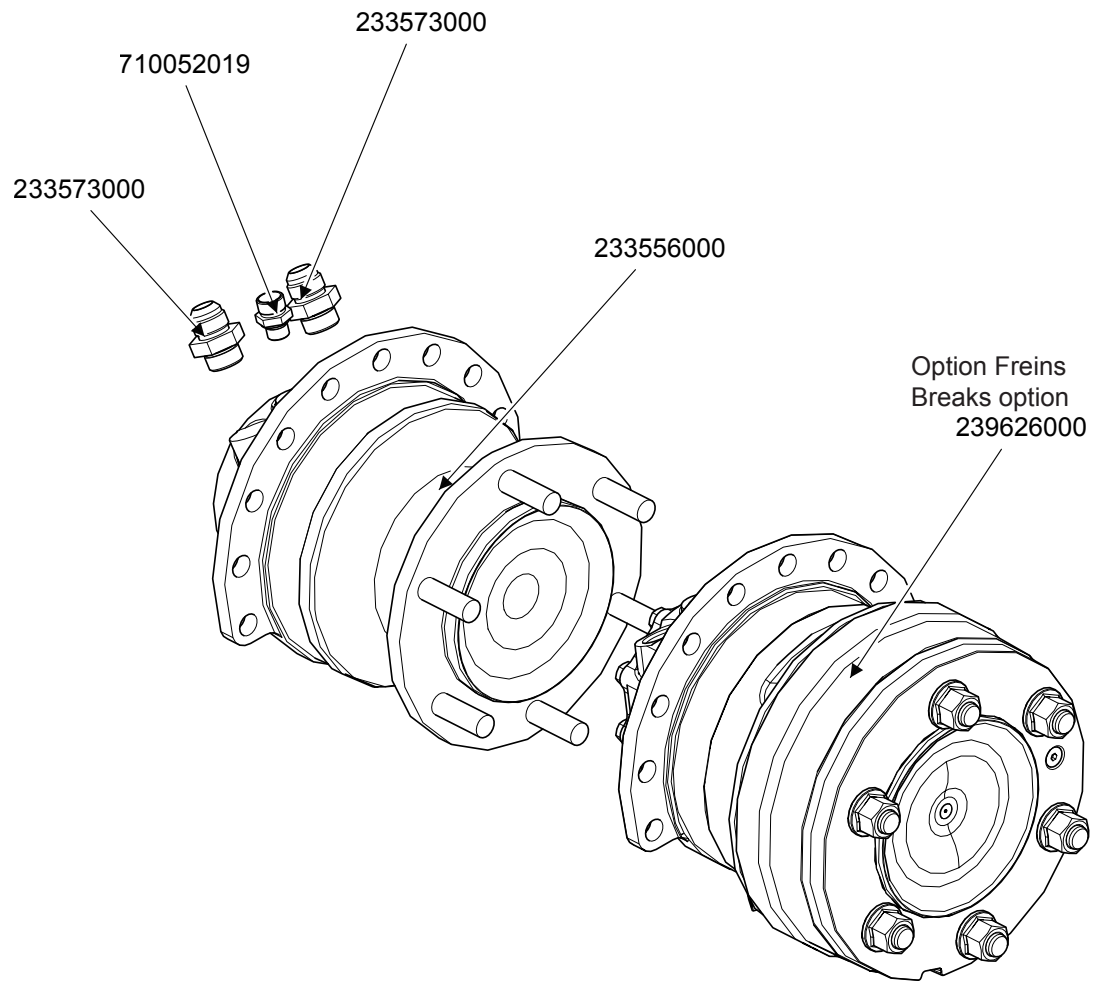
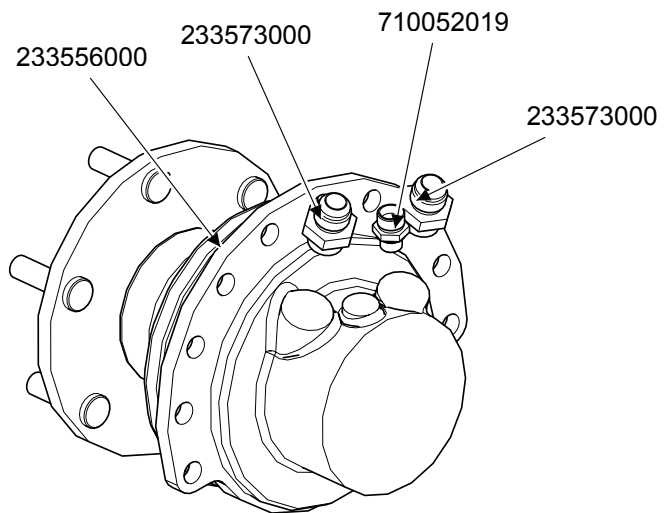
	Essieu avant / Front axle	24.07.2014
	231749000	Chap. 02 P. 1




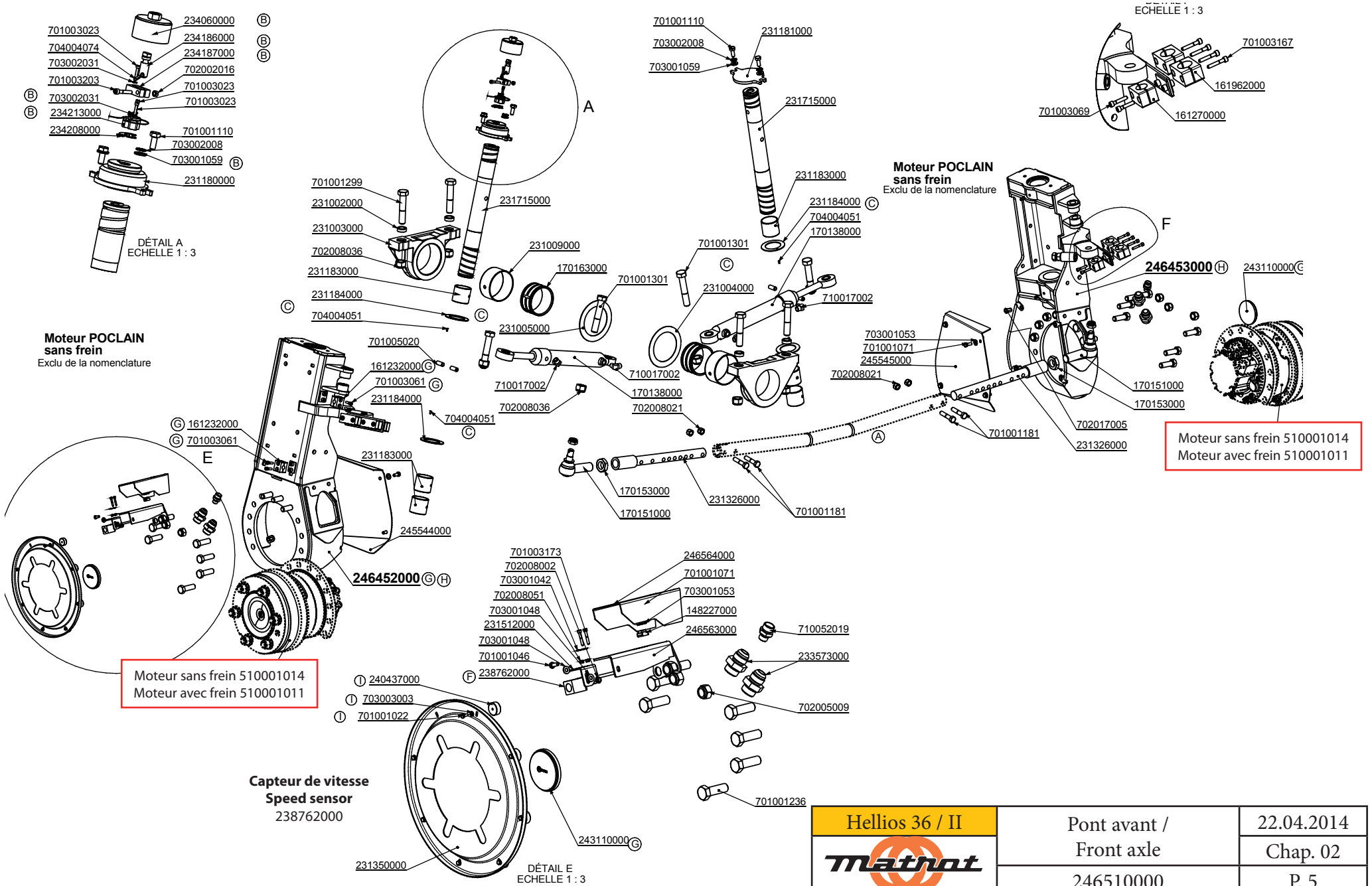
Hellios	Pont avant 1,30m -1,60m / 1.3m - 1.6m Front axle	16.09.2009
	246259000	Chap. 02
		P. 2



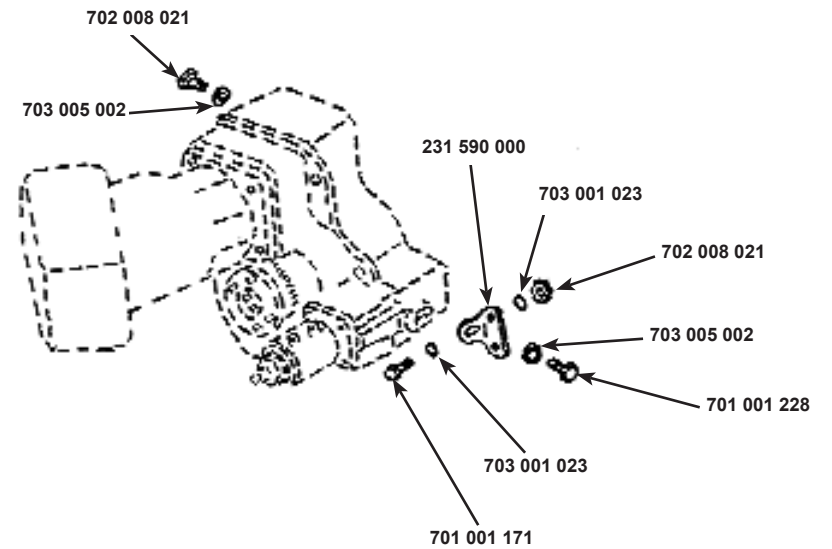
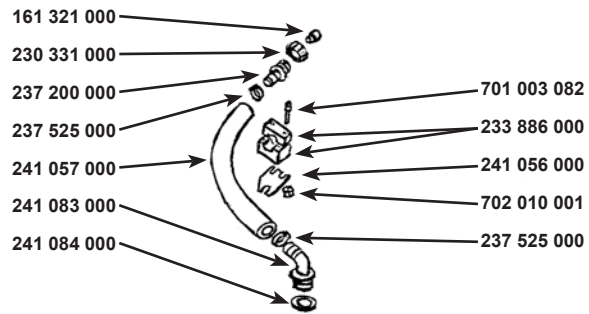
Hellios	Pont avant 1,30m / 1.3m Front axle	07.04.2014
Matrot	246455000	Chap. 02
		P. 3



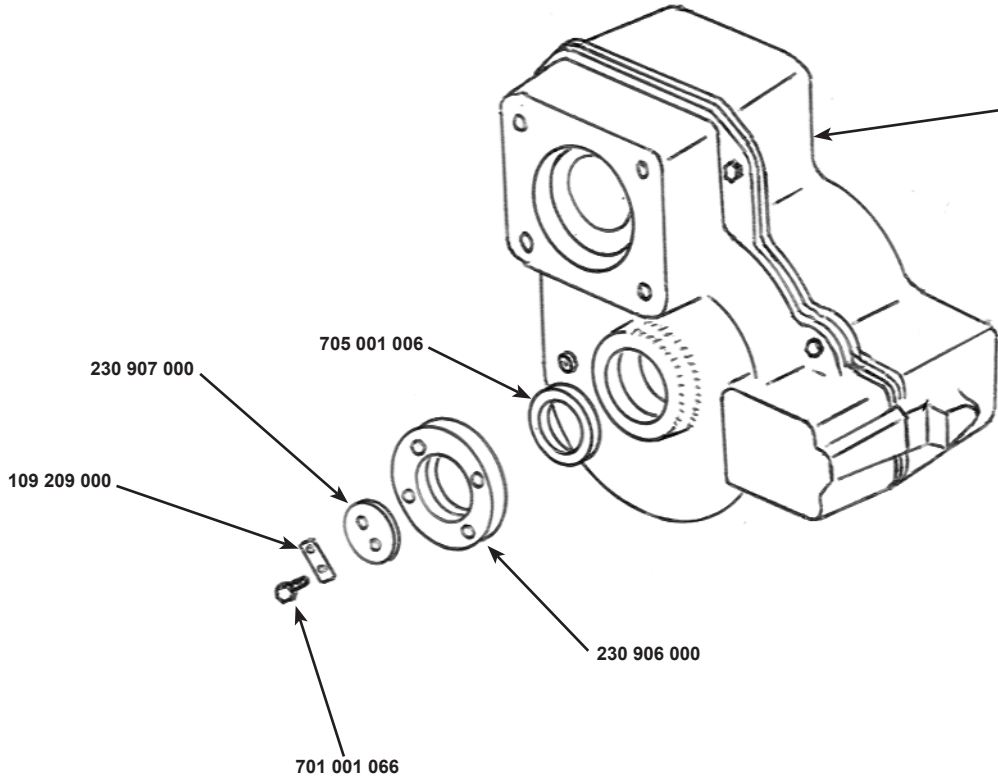
Hellios	Moteurs avant / Hydraulic motors	16.10.2009
		Chap. 02
		P. 4




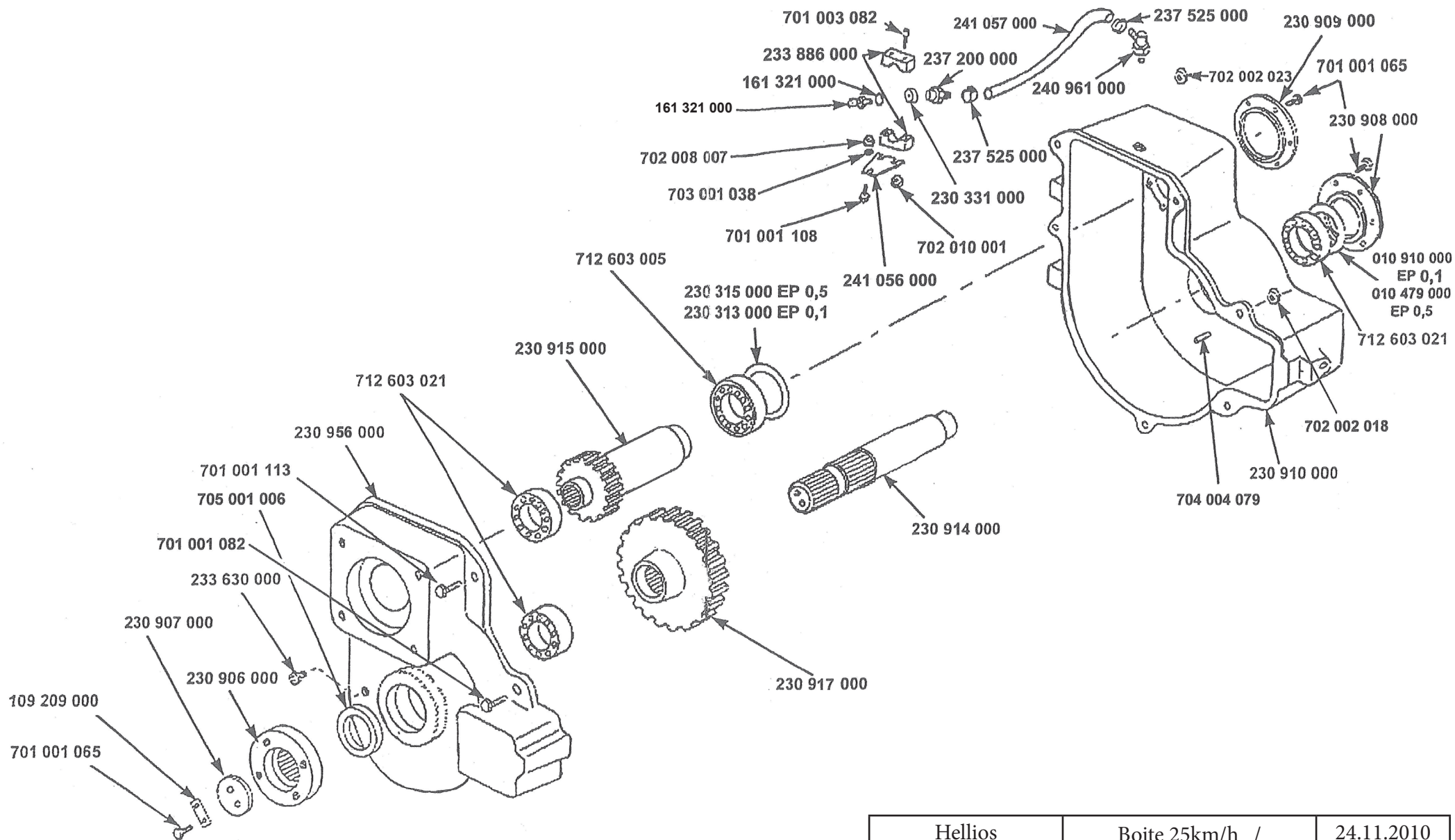
Hellios 36 / II 	Pont avant / Front axle	22.04.2014
	246510000	Chap. 02 P. 5




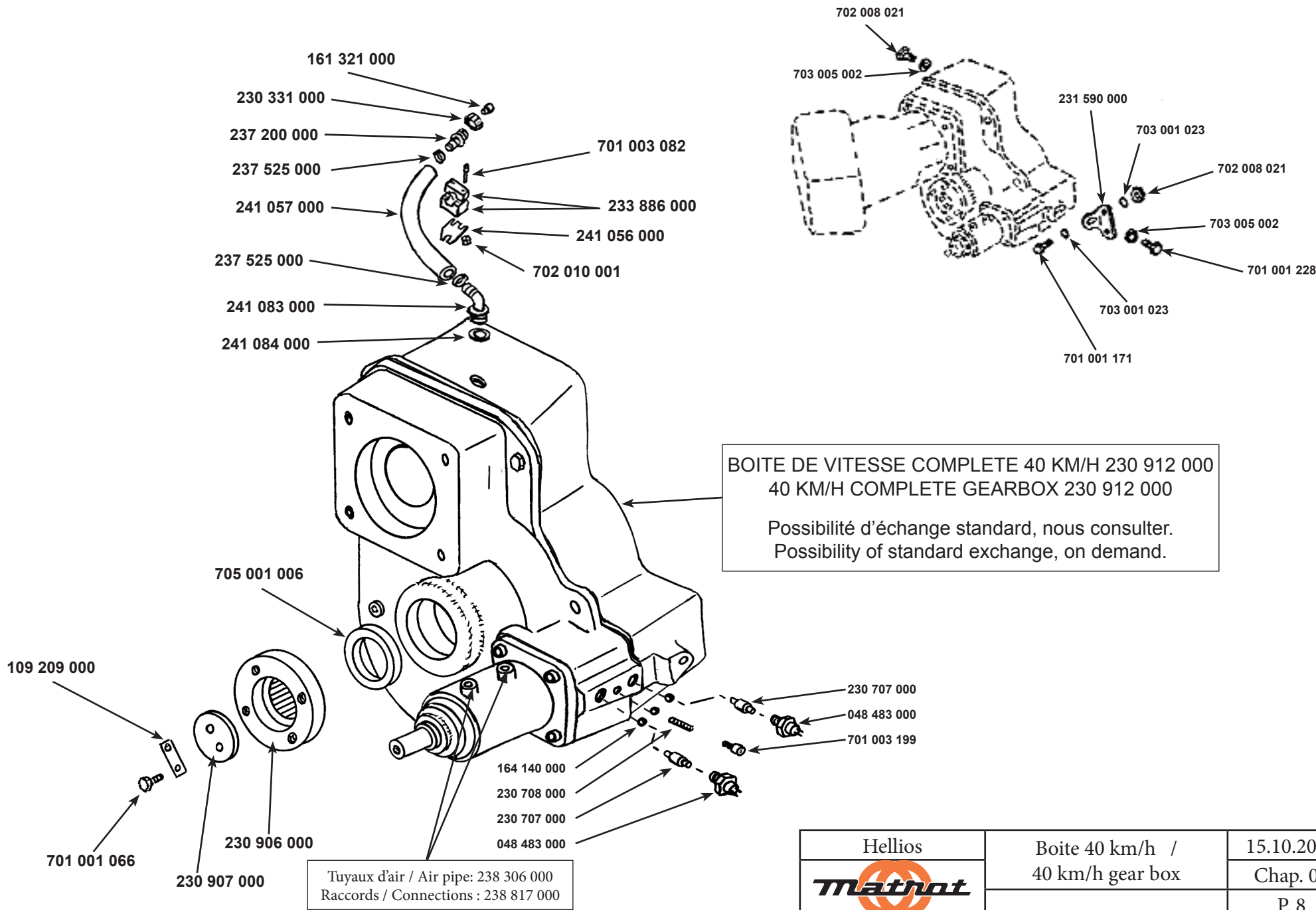
BOITE DE VITESSE COMPLÈTE 25 KM/H 230 916 000
 25 KM/H COMPLETE GEAR BOX 230 916 000
 possibilité d'échange standard, nous consulter.
 Possibility of standard exchange, on demand.

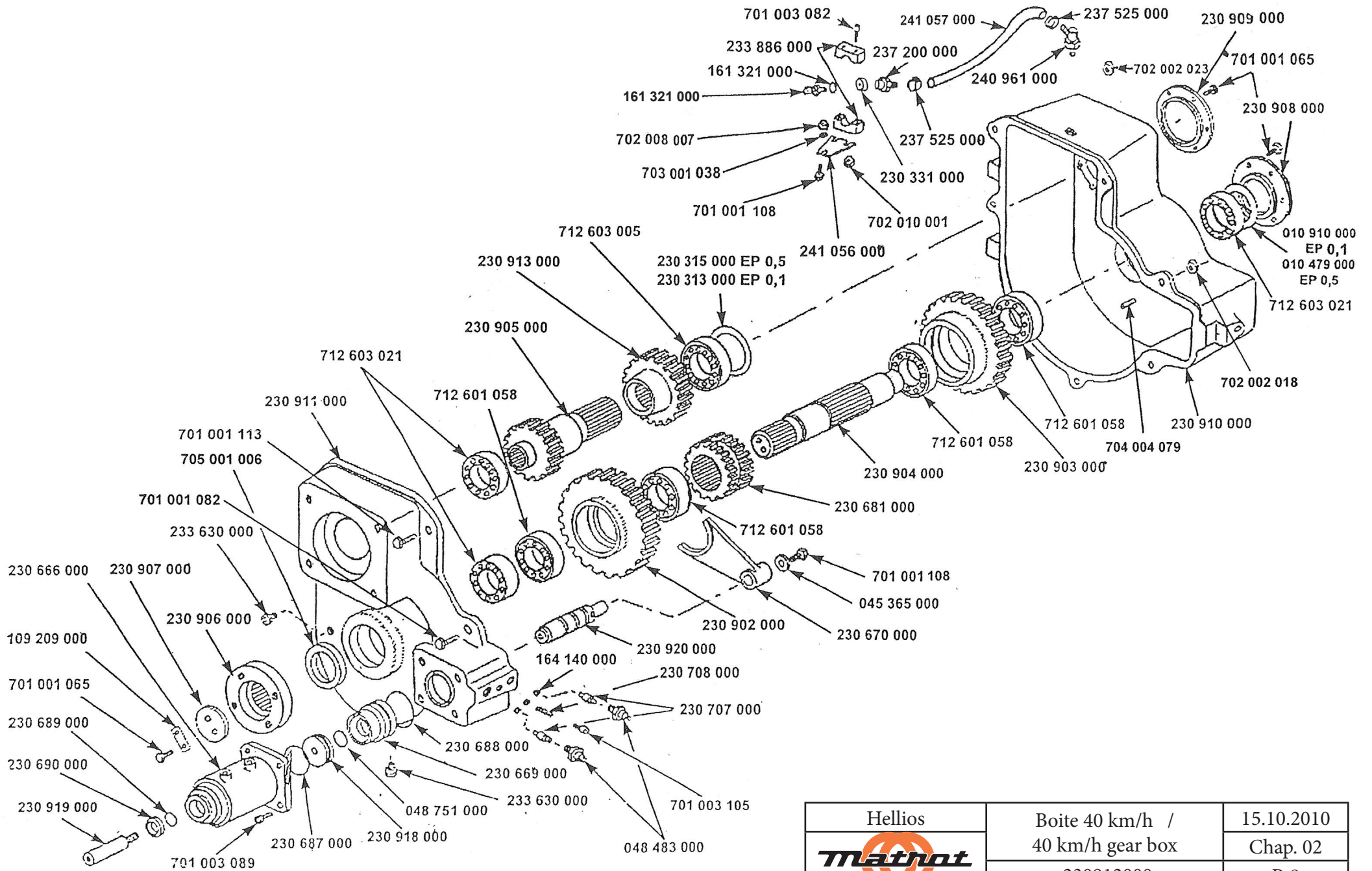



Hellios	Boite 25km/h / 25 km/h gear box	24.11.2010
		Chap. 02
		P. 6

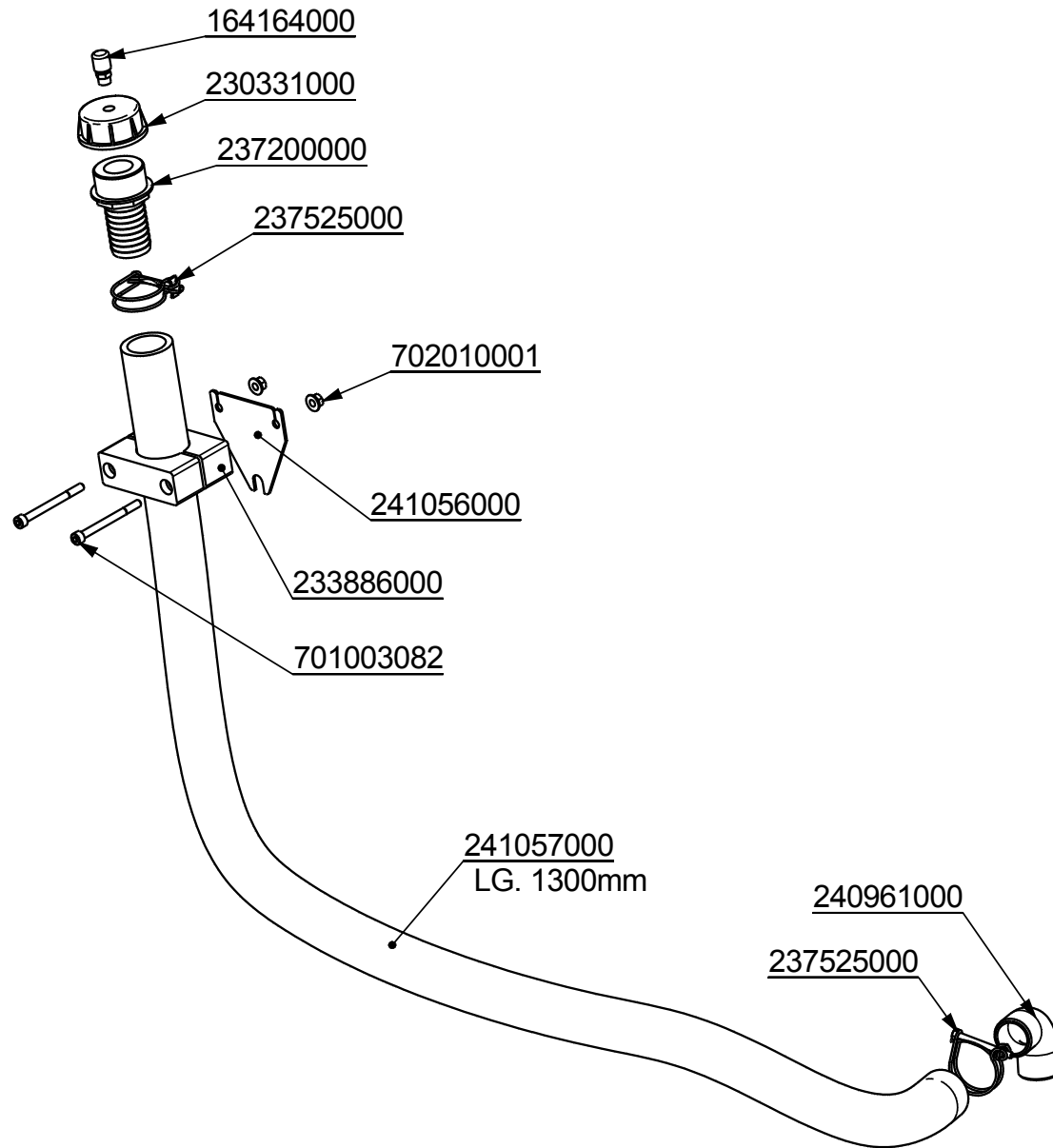



Hellios	Boite 25km/h / 25 km/h gear box	24.11.2010
	230916000	Chap. 02
		P. 7

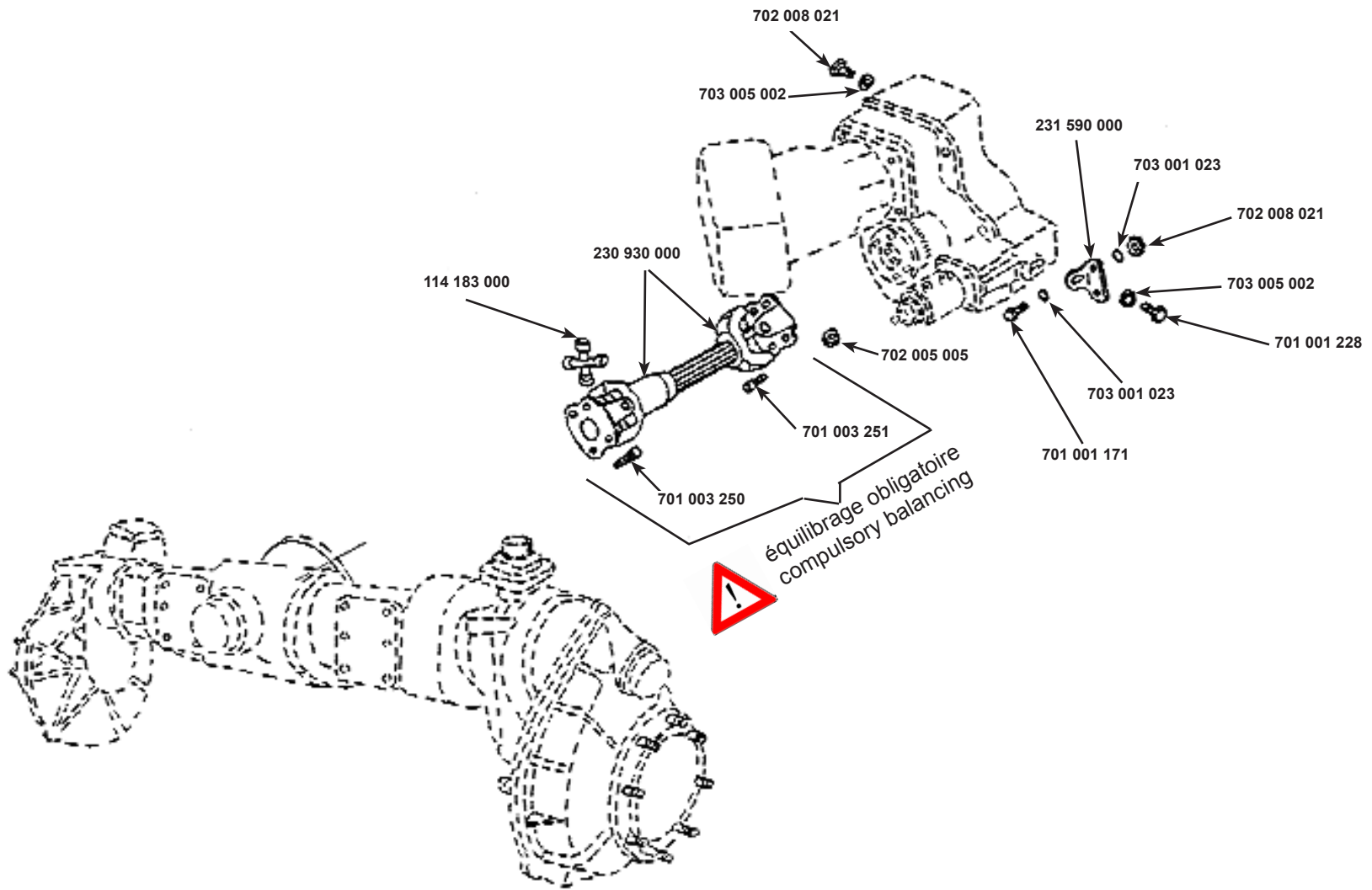





Hellios	Boite 40 km/h / 40 km/h gear box	15.10.2010
	230912000	Chap. 02
		P. 9



Hellios	Reniflard boite de vitesse /	27.06.2013
	Gear box breather	Chap. 02
	241413000	P. 10



Hellios	Cardan arrière / Universal joint	16.10.2009
	241245000	Chap. 02
		P. 11

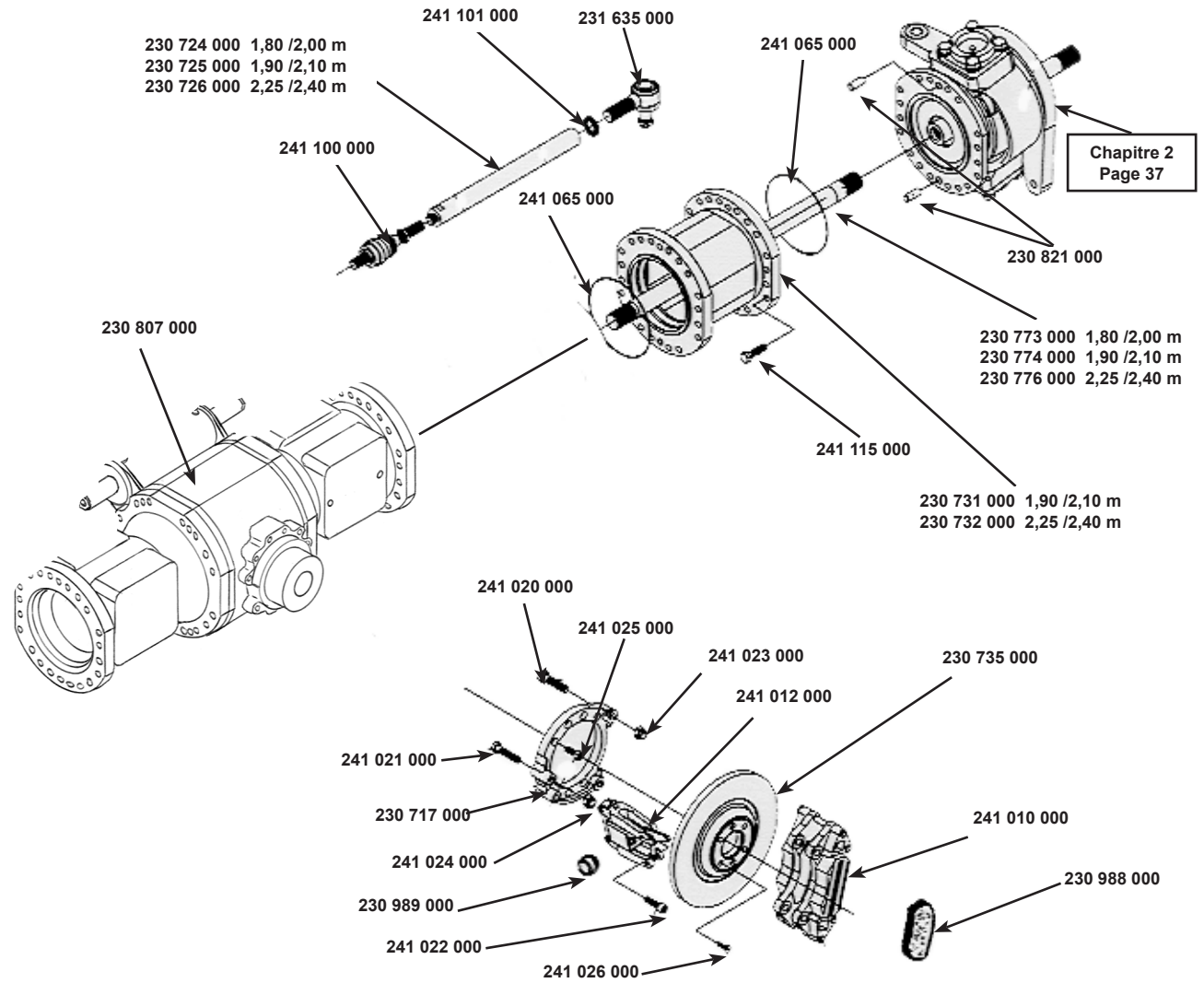
KIT PONT 1,80/2,00 m 230 987 000

KIT PONT 1,90/2,10 m 230 986 000

KIT PONT 2,25/2,40 m 230 985 000

(AXLE KIT)

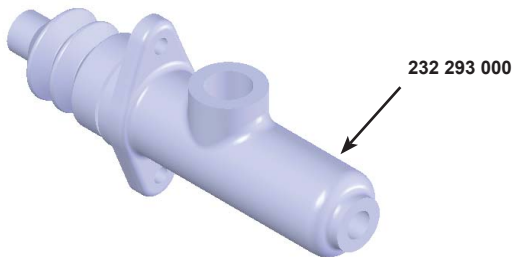
230 724 000 1,80 /2,00 m
230 725 000 1,90 /2,10 m
230 726 000 2,25 /2,40 m




Chapitre 2
Page 37



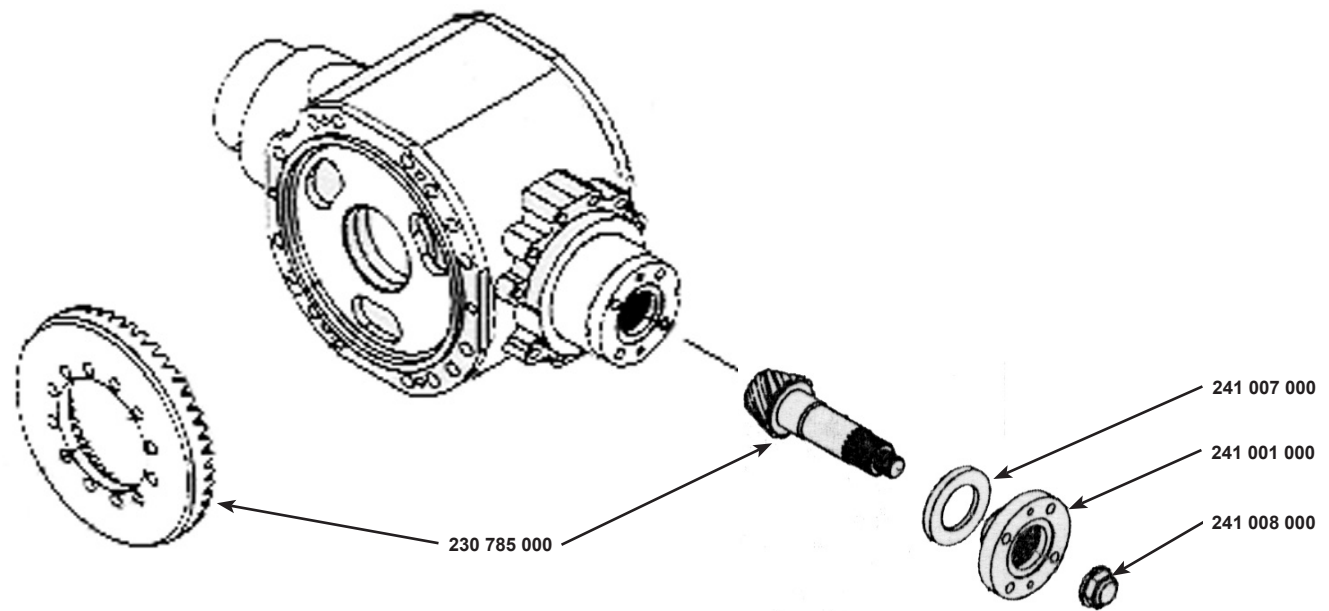
COUPELLE A DEMONTER




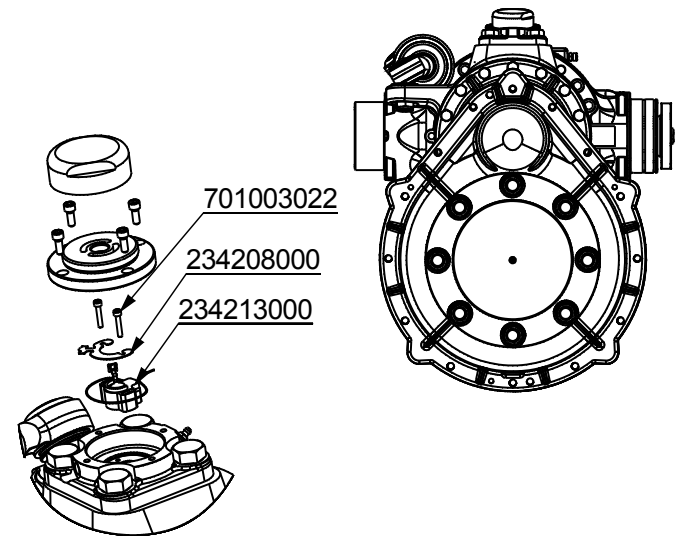
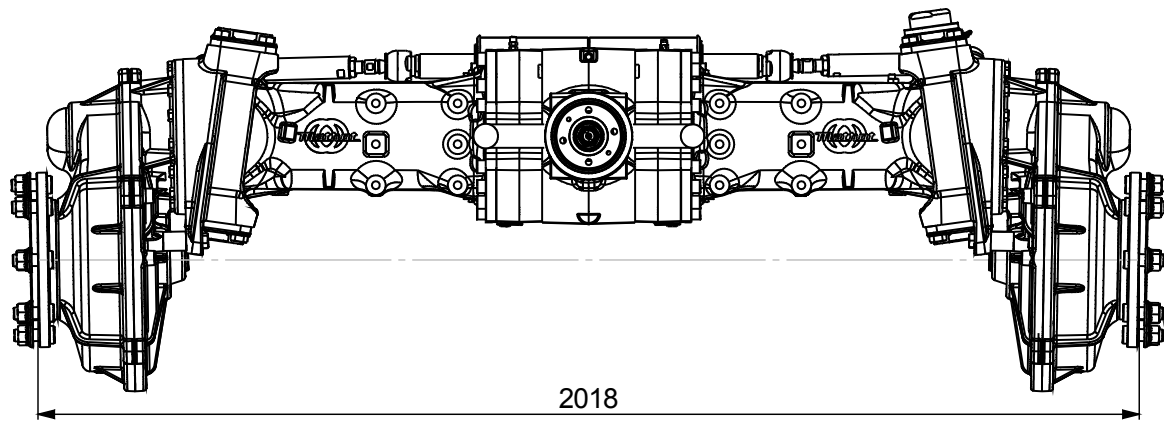
232 293 000

Hellios	Pont arrière / Rear axle	16.10.2009
		Chap. 02
		P. 12

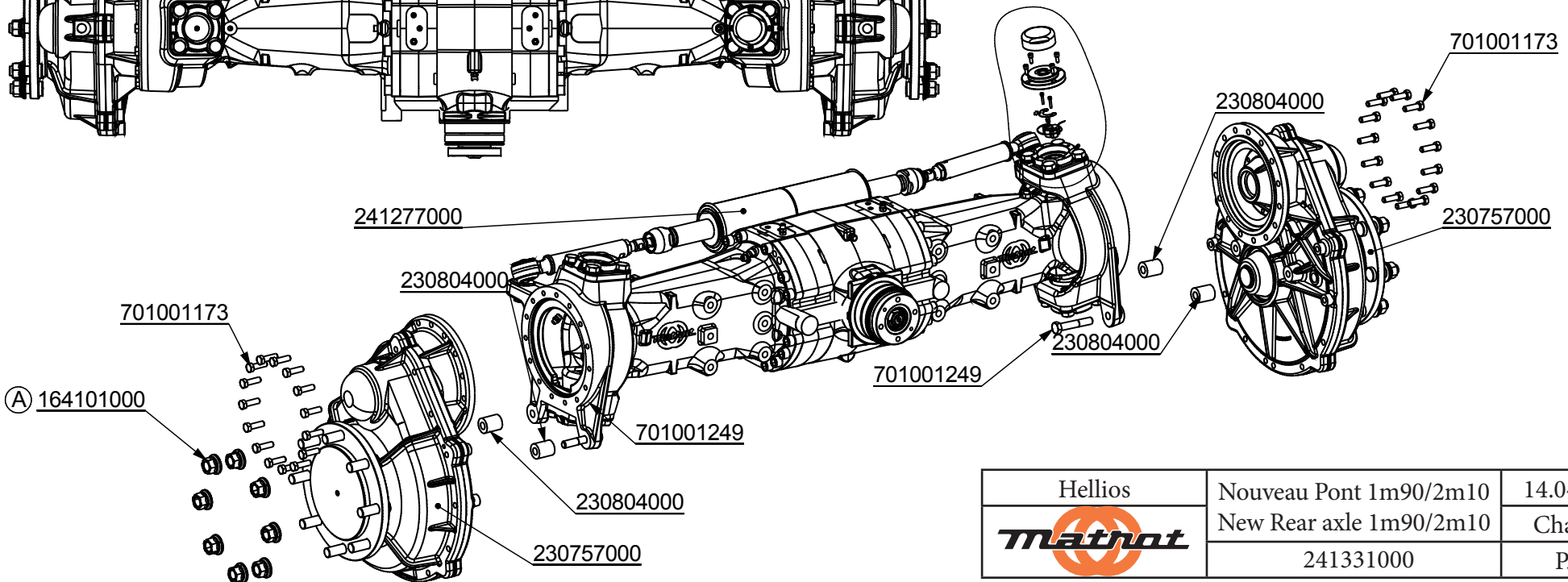
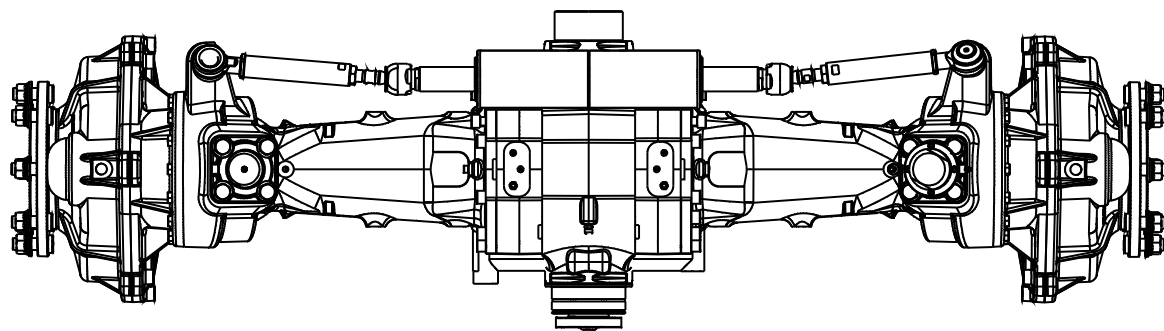
Différentiel arrière complet
 Complete rear differential
 241 164 000




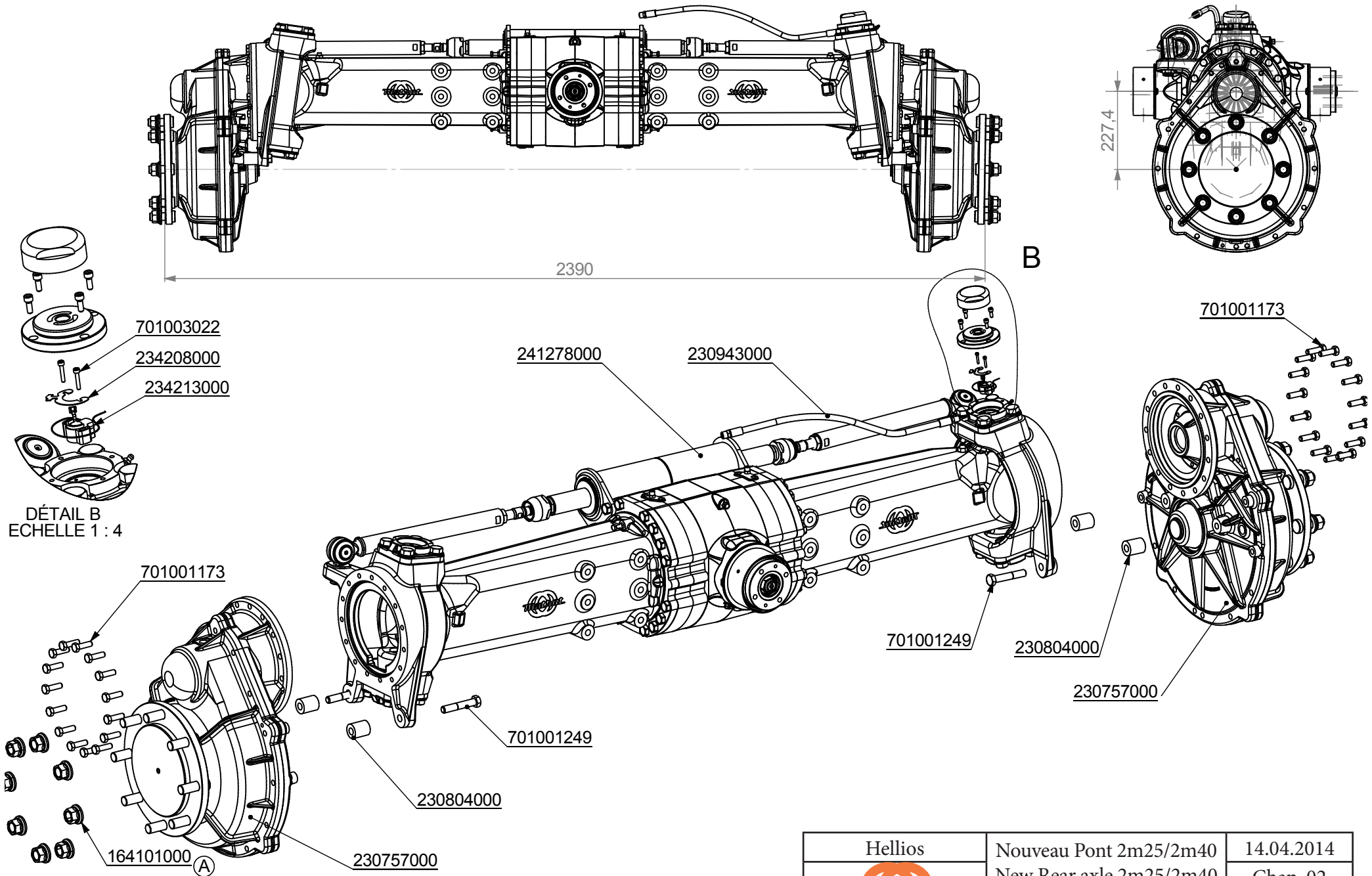
Hellios	Différentiel / Differential	16.10.2009
	241164000	Chap. 02
		P. 13




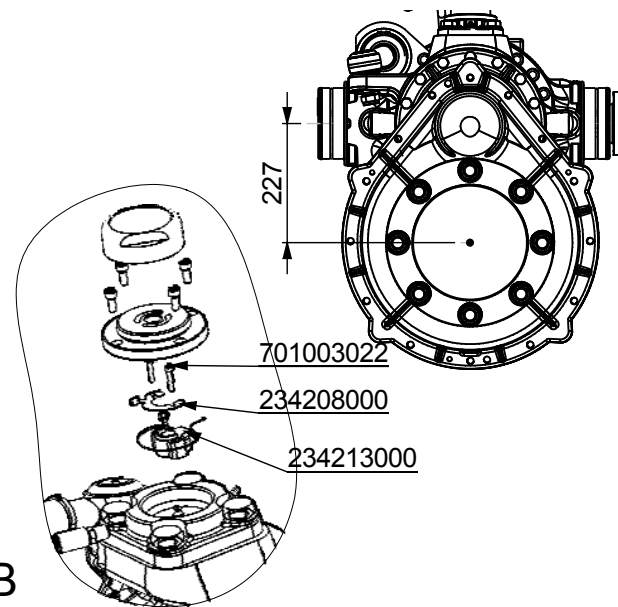
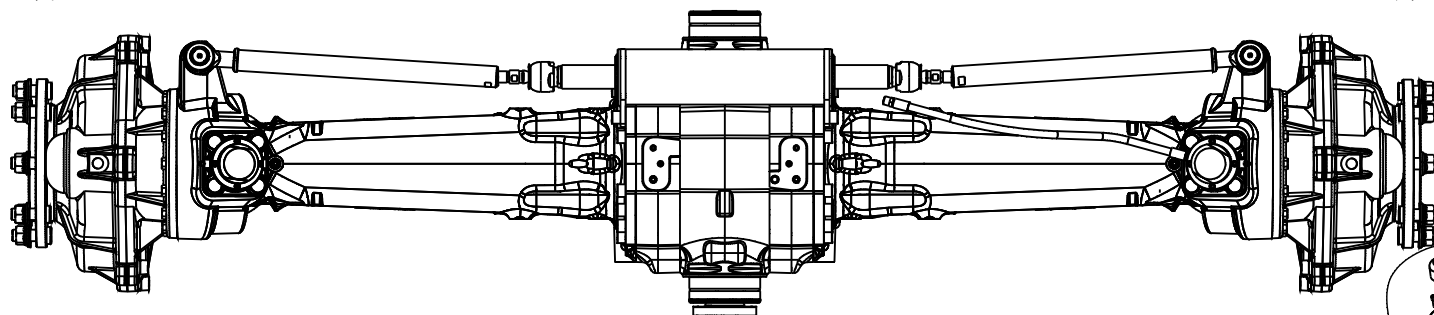
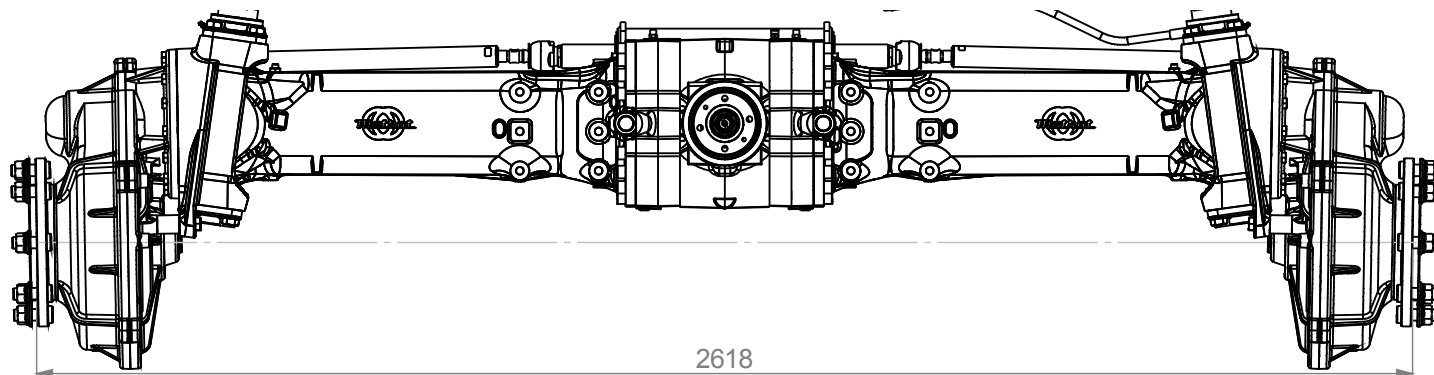
DÉTAIL B
ECHELLE 1 : 5



Hellios	Nouveau Pont 1m90/2m10	14.04.2014
	New Rear axle 1m90/2m10	Chap. 02
	241331000	P. 14

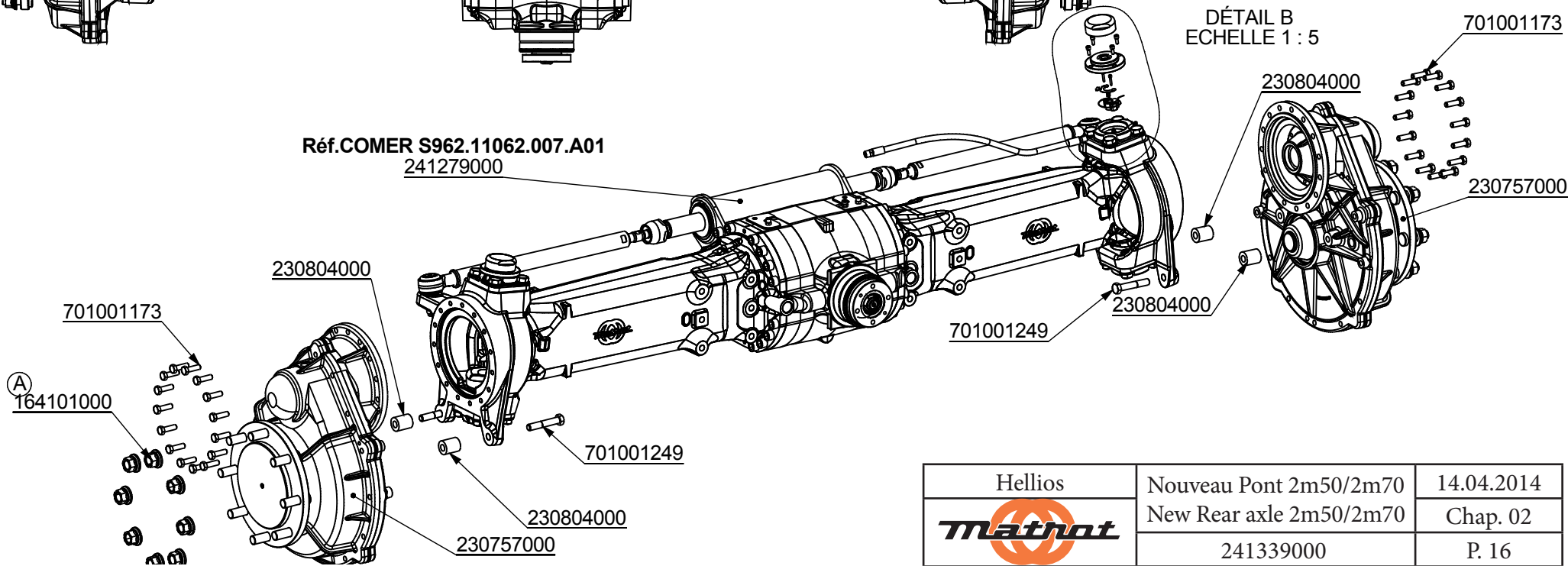


Hellios	Nouveau Pont 2m25/2m40	14.04.2014
	New Rear axle 2m25/2m40	Chap. 02
	241332000	P. 15

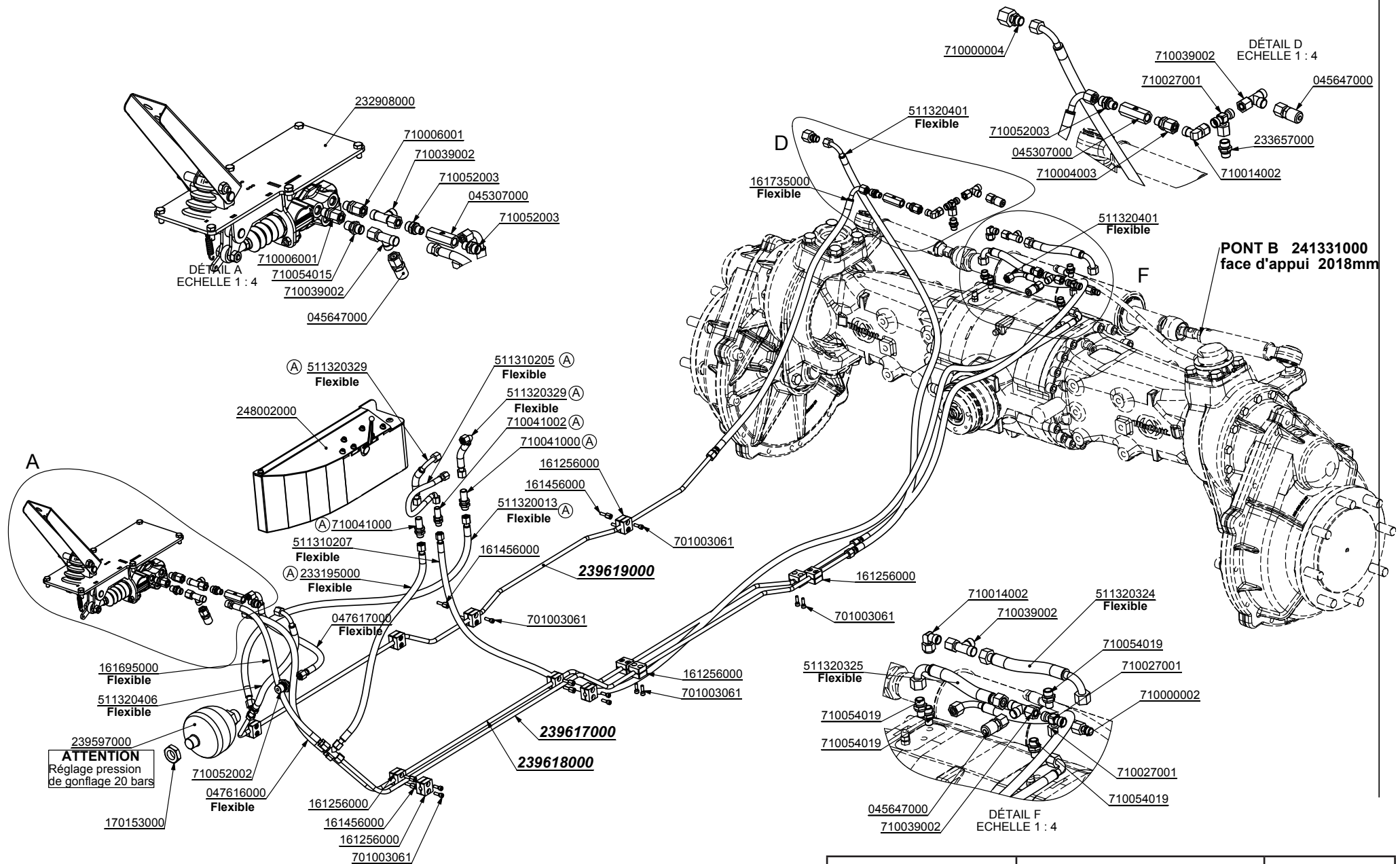



DÉTAIL B
ECHELLE 1 : 5

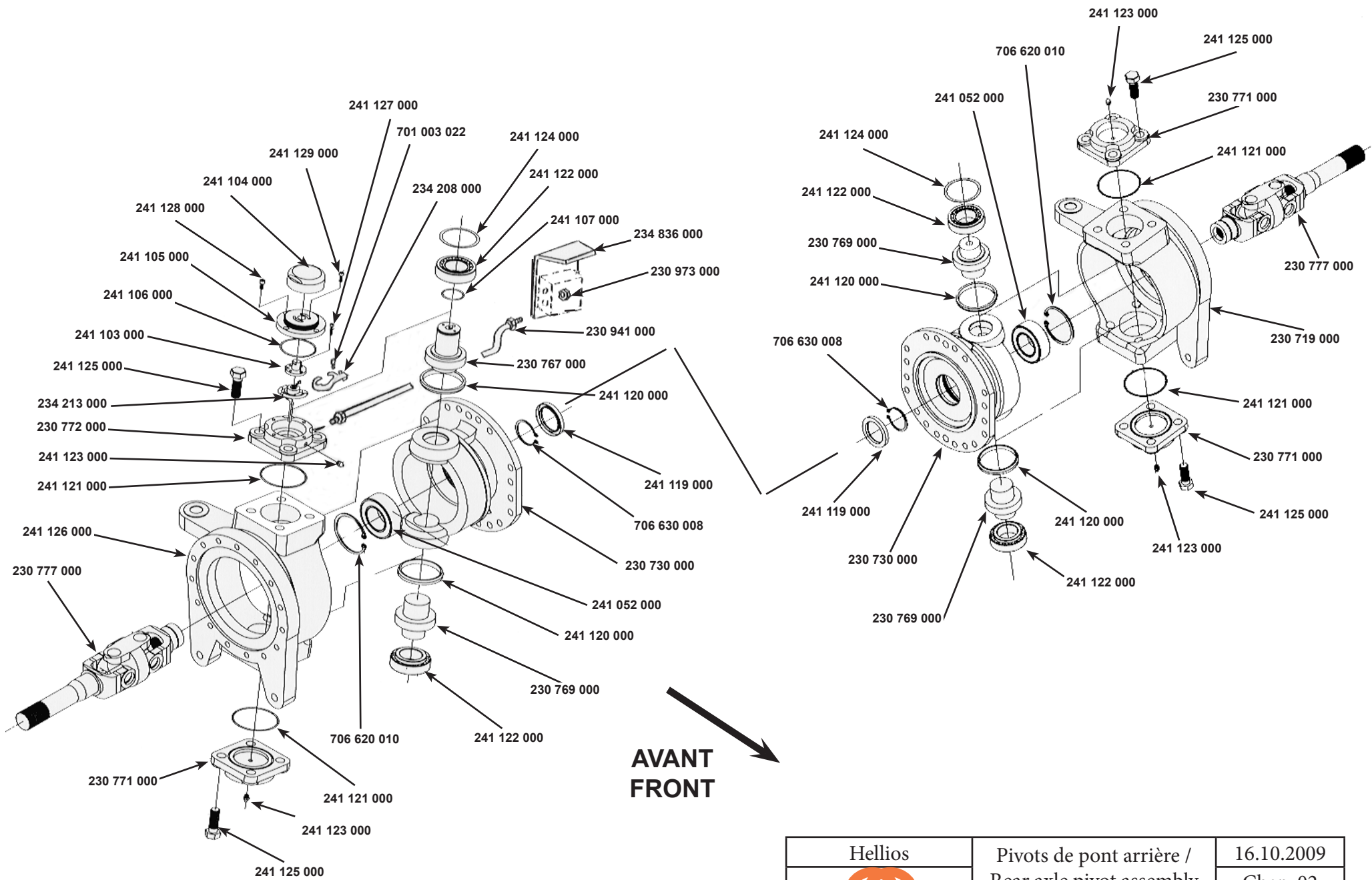
Réf.COMER S962.11062.007.A01
241279000




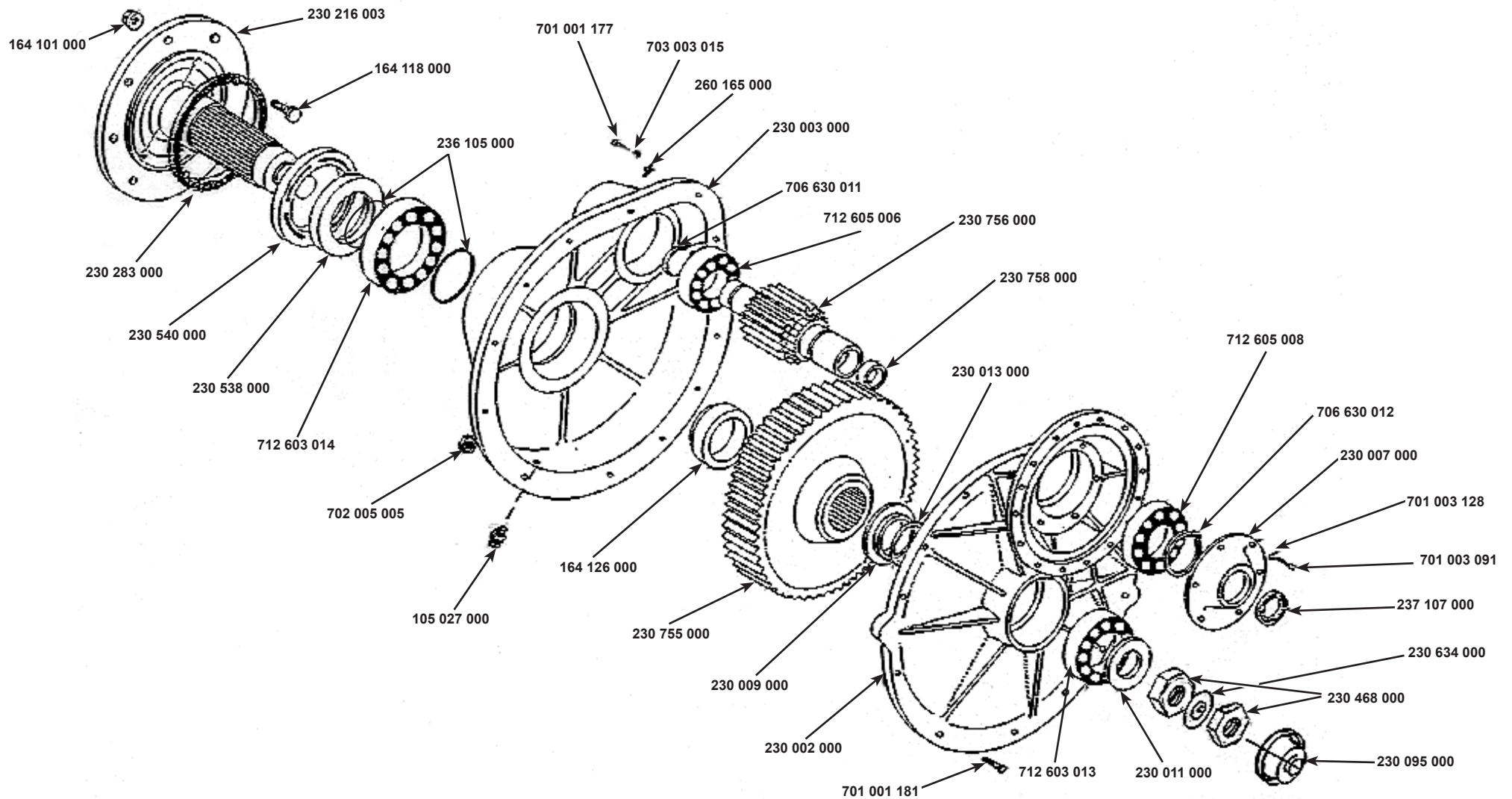
Hellios 	Nouveau Pont 2m50/2m70	14.04.2014
	New Rear axle 2m50/2m70	Chap. 02
	241339000	P. 16




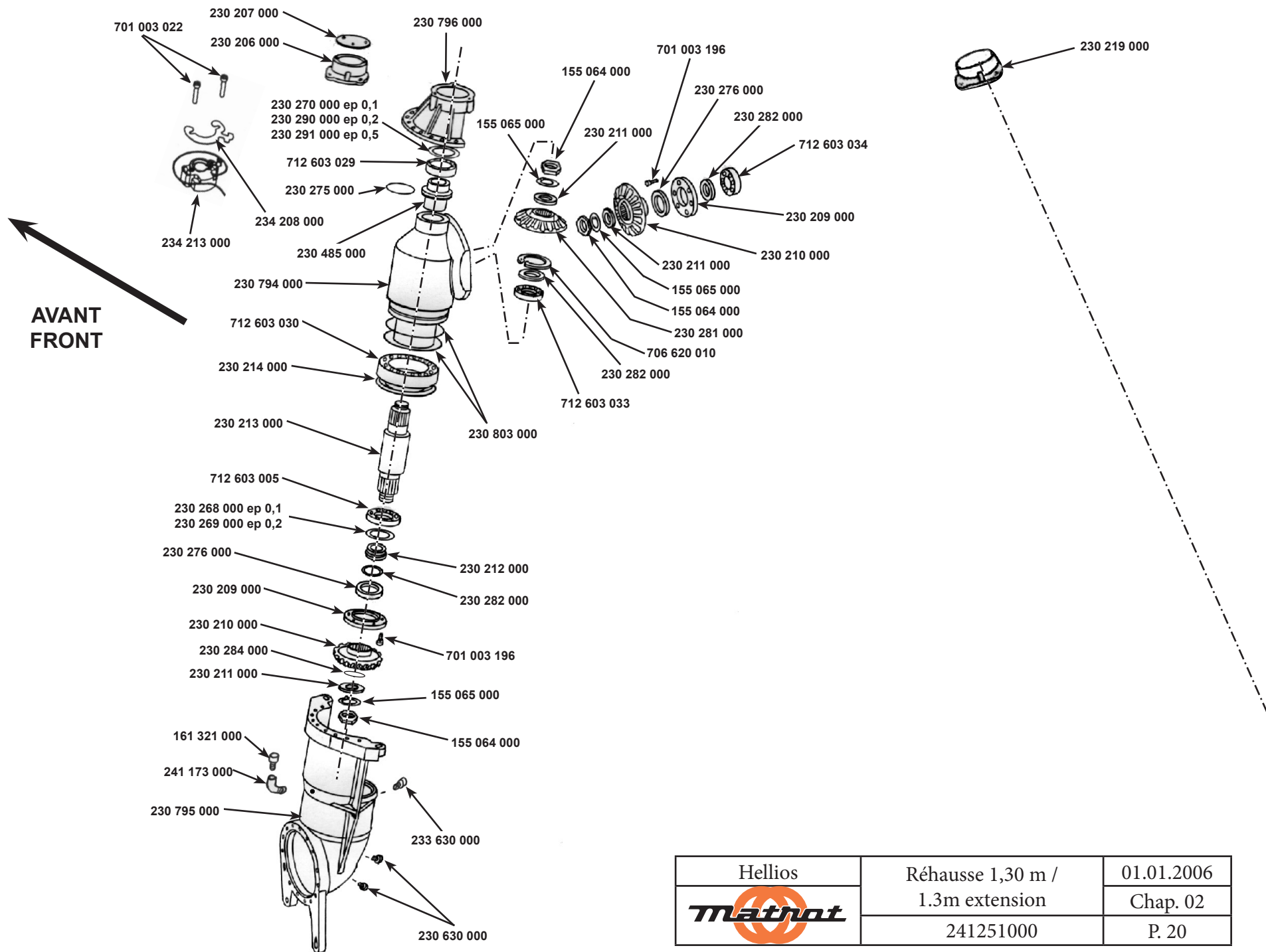
	Freinage pont 2012 / Brake system 2012	16.10.2009
		Chap. 02
		P. 17



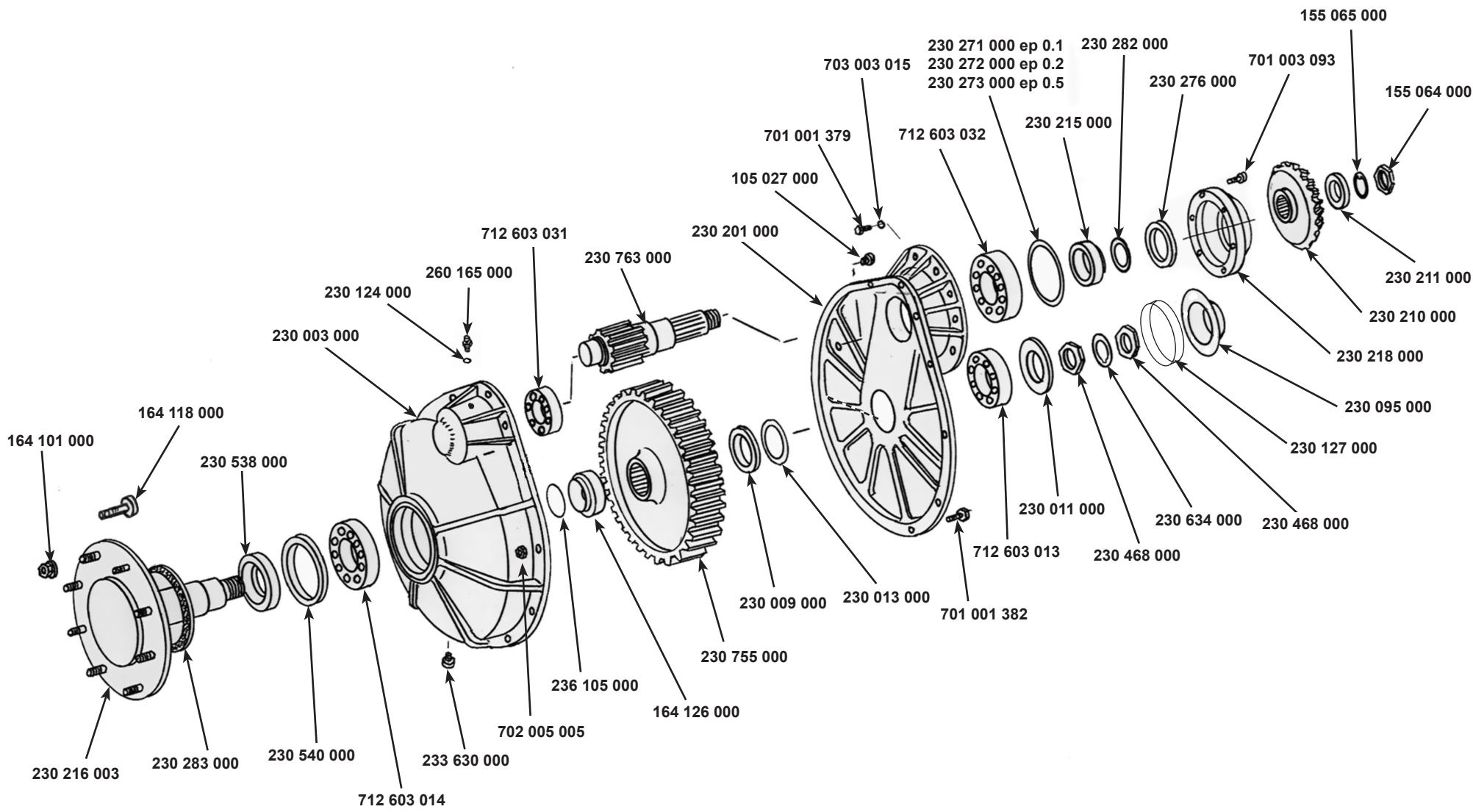
Hellios 	Pivots de pont arrière / Rear axle pivot assembly	16.10.2009 Chap. 02 P. 18
--	--	---------------------------------




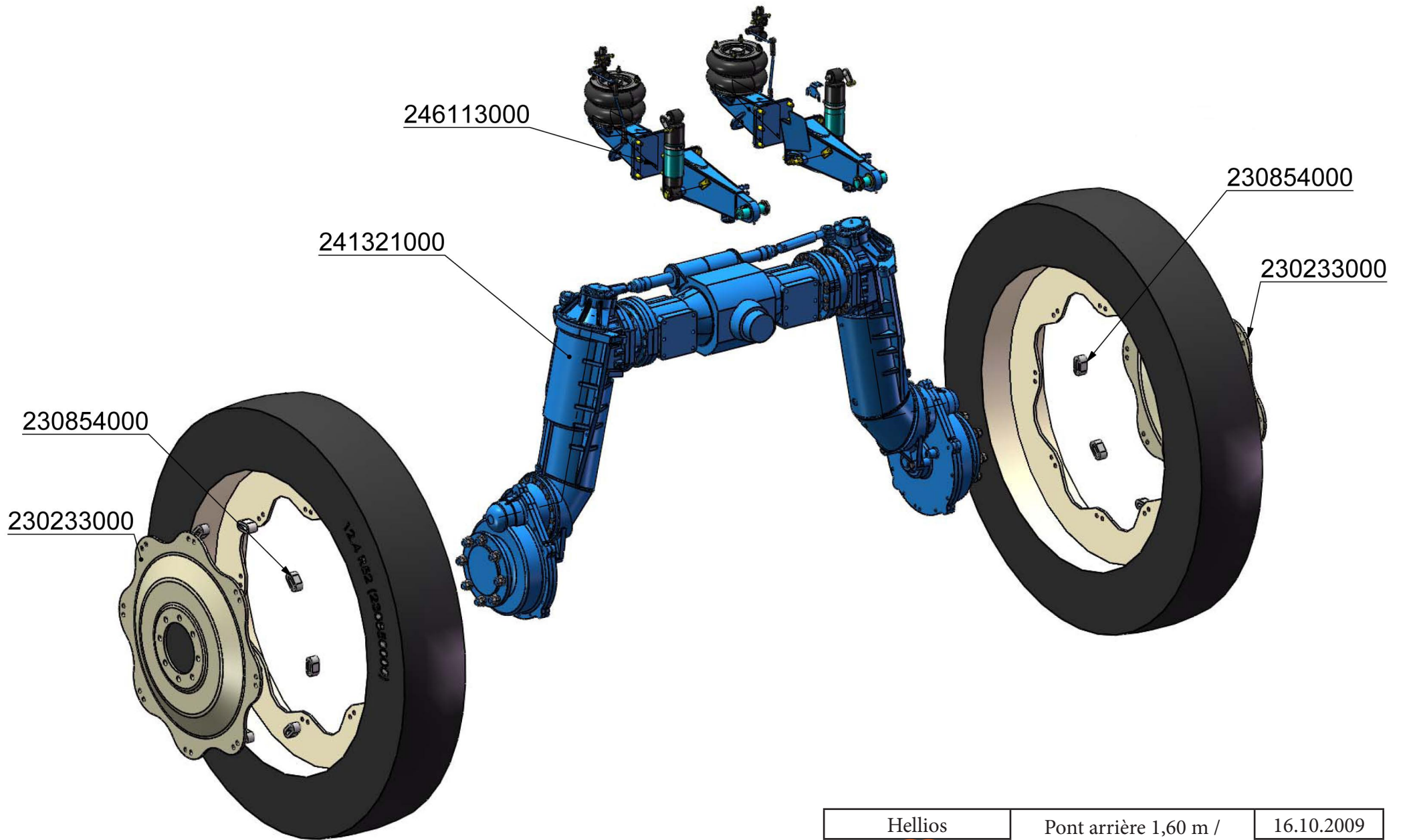
Hellios	Réducteurs / Final drive	01.01.2006
	230757000	Chap. 02
		P. 19



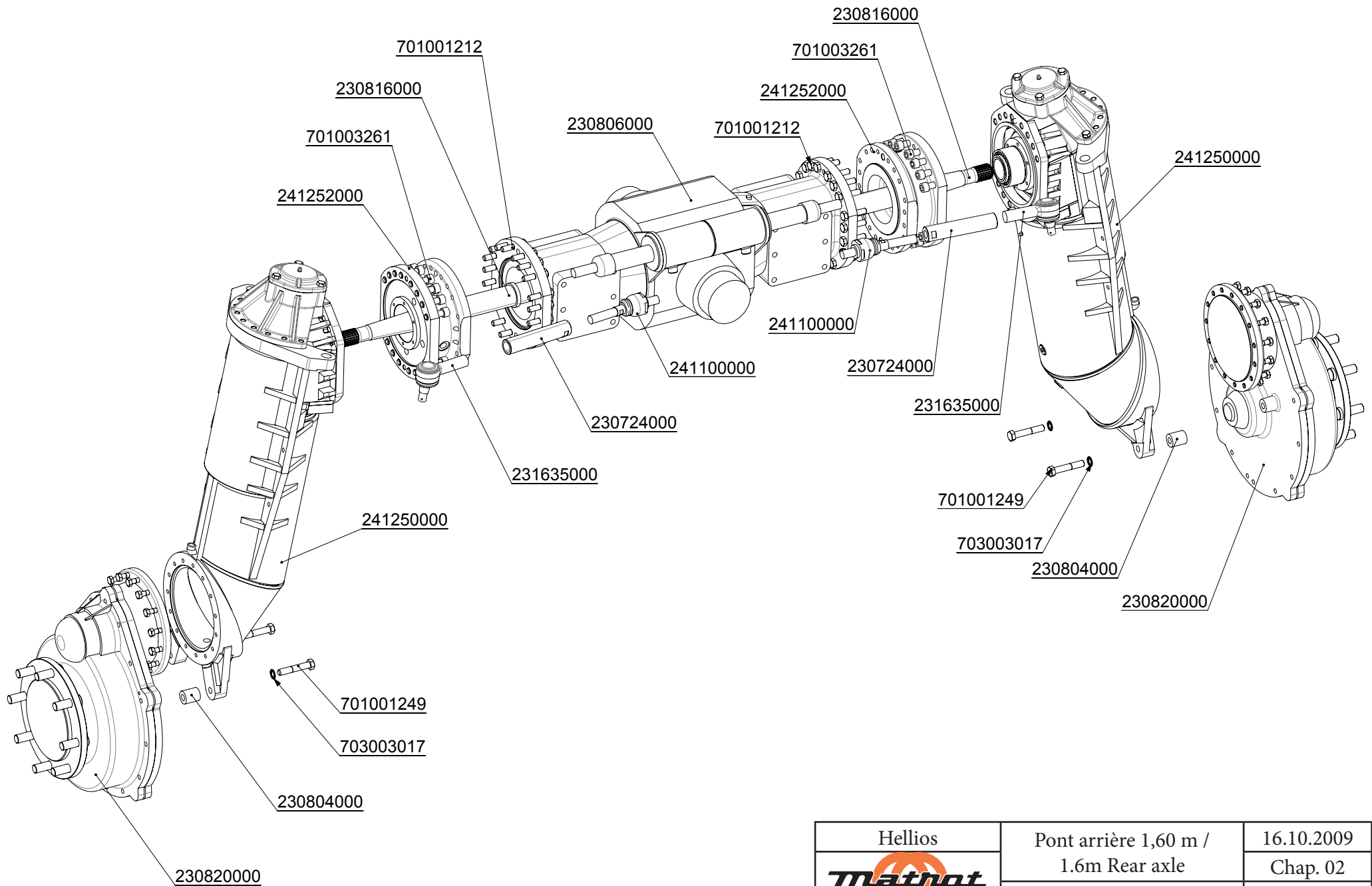
Hellios	Réhausse 1,30 m / 1.3m extension	01.01.2006
Matrot	241251000	Chap. 02
		P. 20



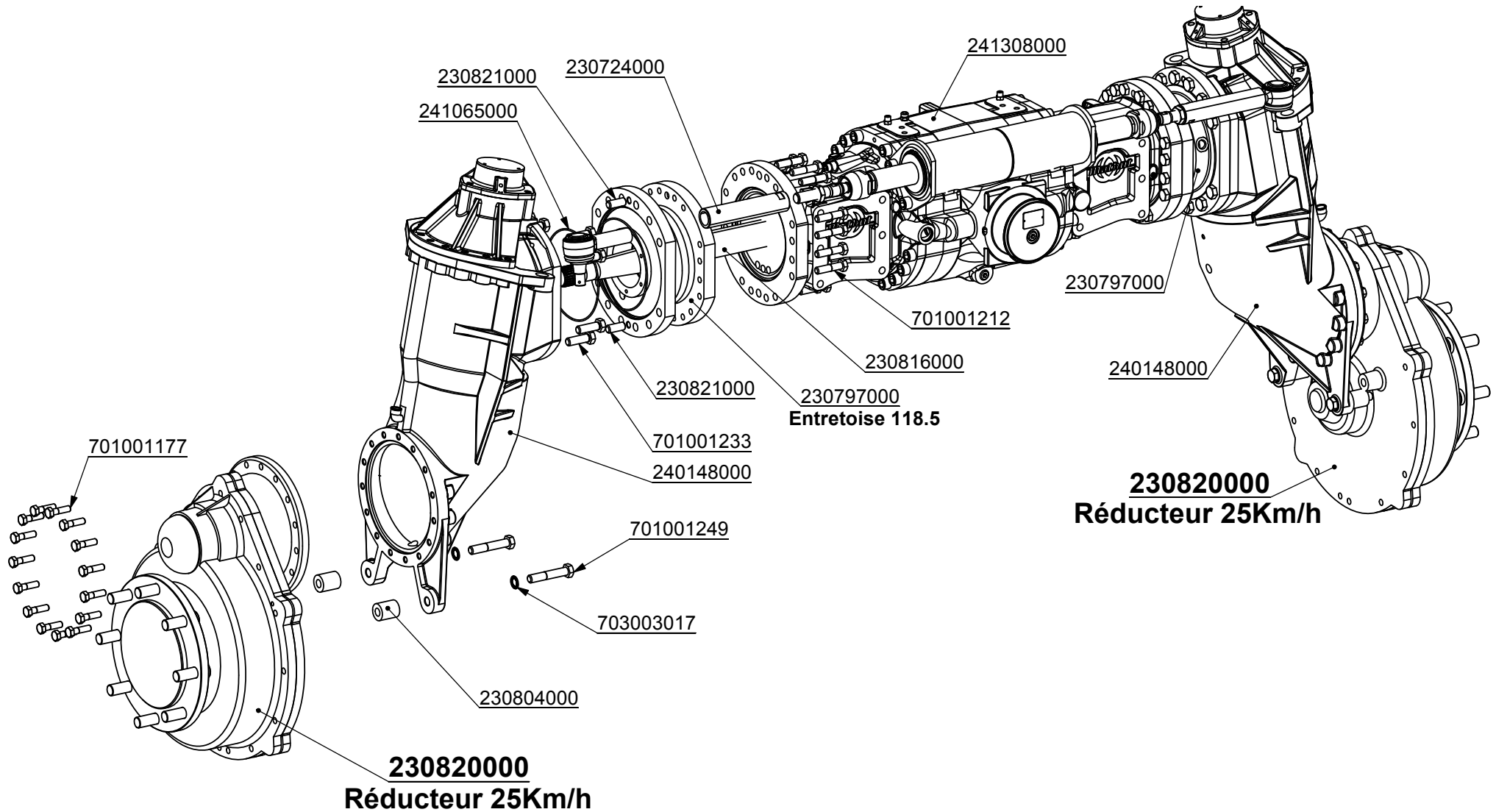
Hellios	Réducteur 1,30 m / 1.3m final drive	01.01.2006
	230820000	Chap. 02
		P. 21



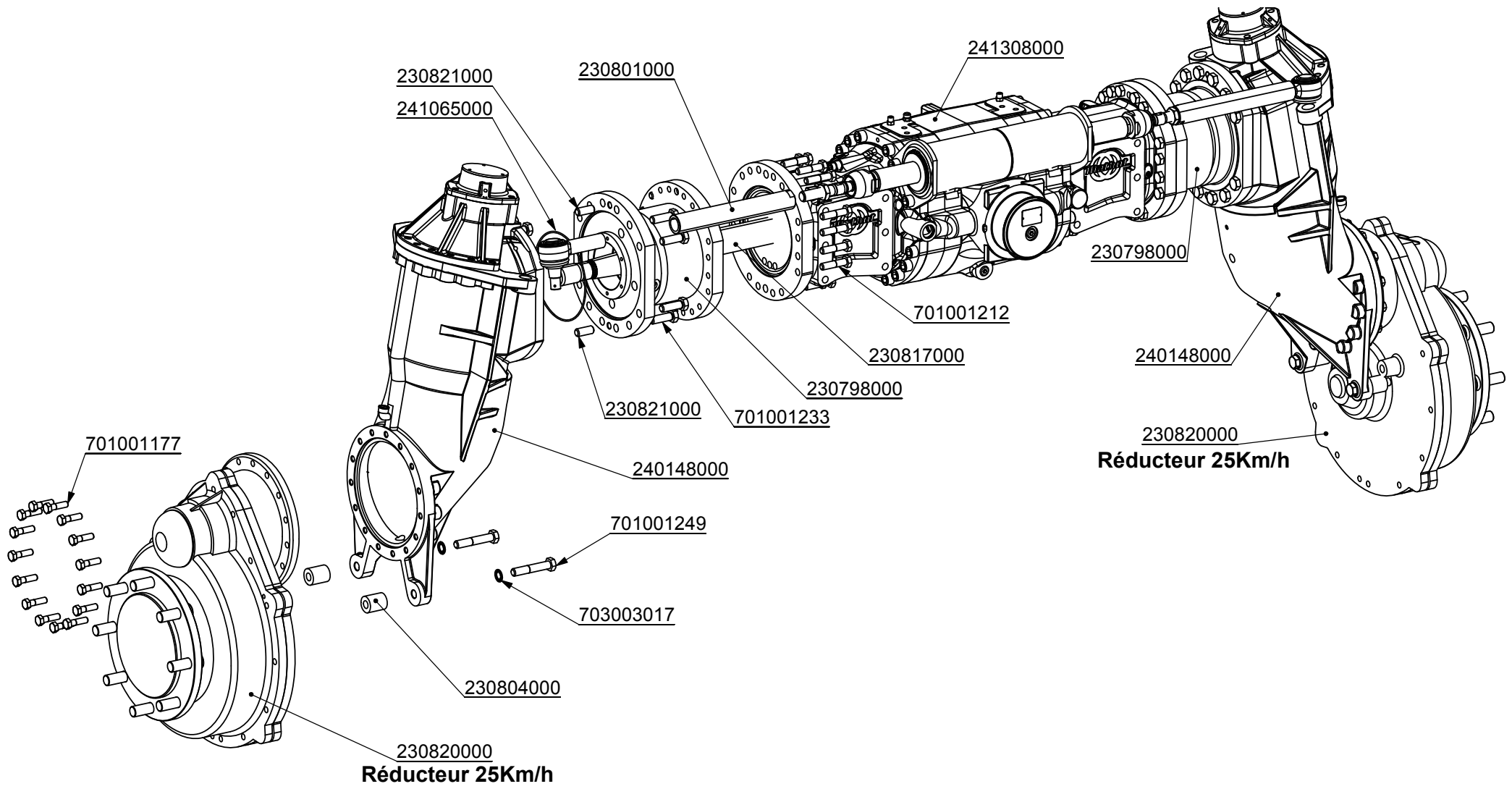
Hellios	Pont arrière 1,60 m / 1.6m Rear axle	16.10.2009
		Chap. 02
		P. 22




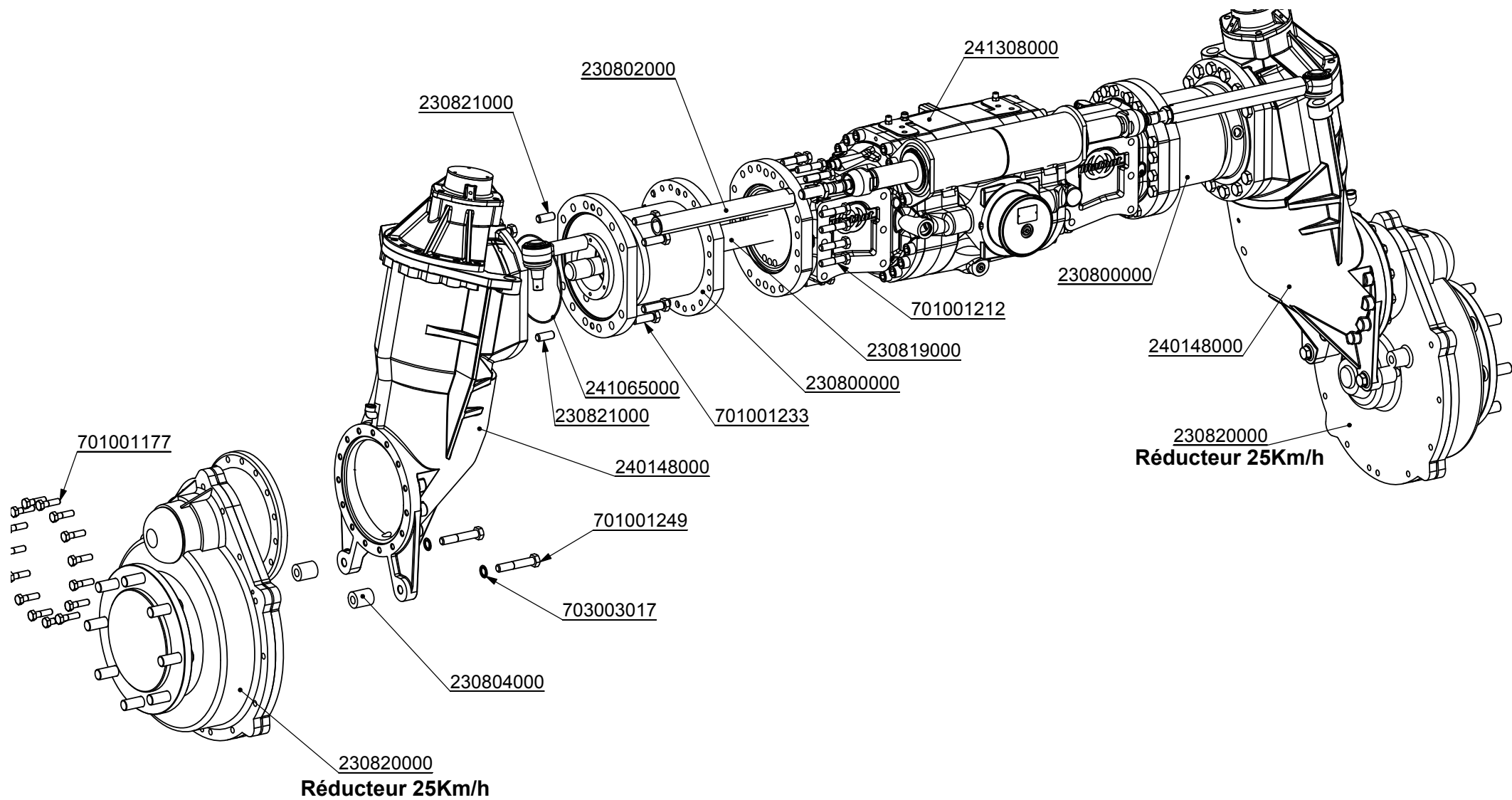
Hellios	Pont arrière 1,60 m / 1.6m Rear axle	16.10.2009
	241321000	Chap. 02
		P. 23




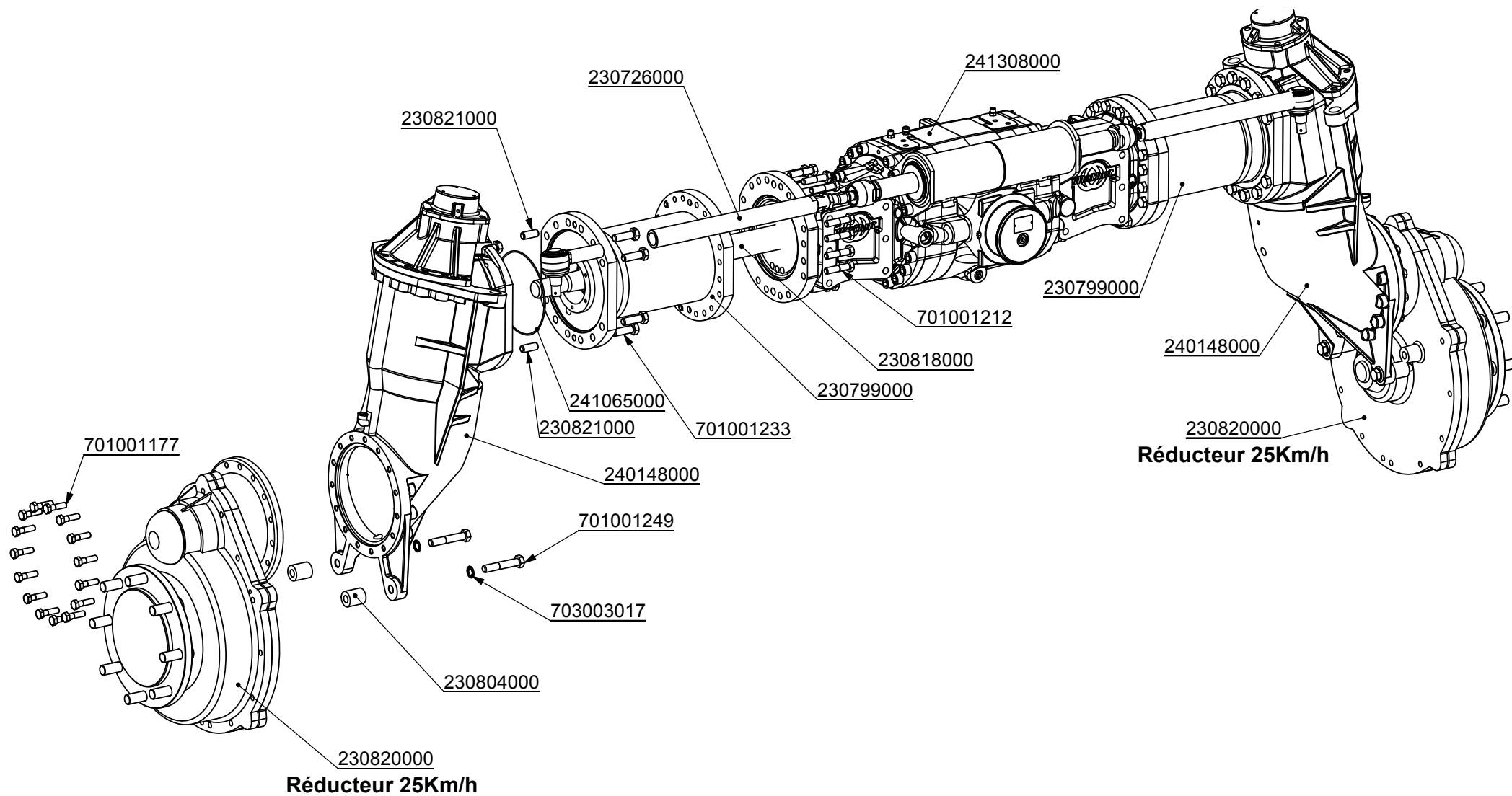
Hellios	Nouveau Pont 1m30/2m25	29.08.2011
Matrot	New Rear axle 1m30/2m25	Chap. 02
	241341000	P. 24




Hellios	Nouveau Pont 1m30/2m40	08.11.2011
	New Rear axle 1m30/2m40	Chap. 02
	241334000	P. 25



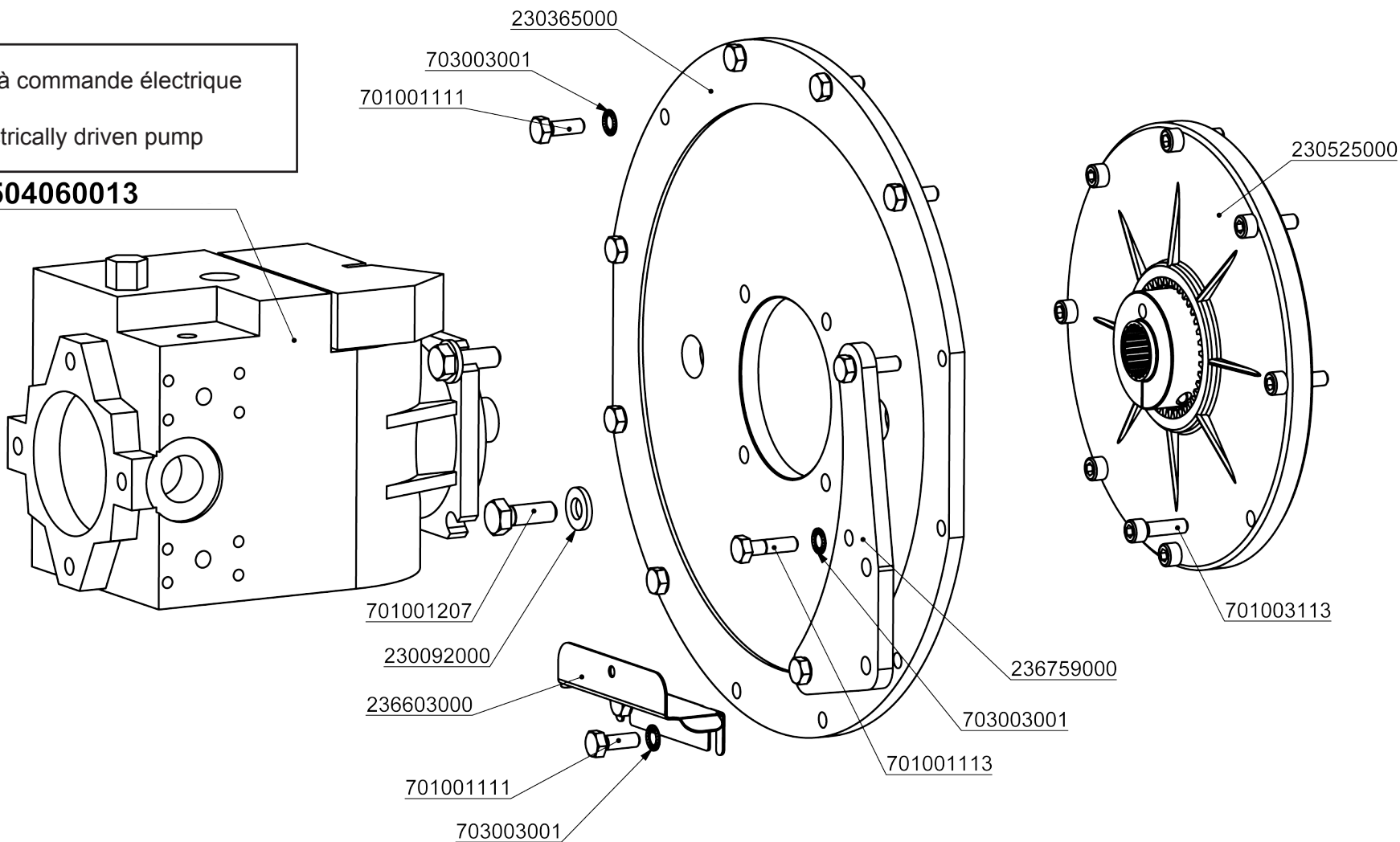
Hellios	Nouveau Pont 1m30/2m50	08.11.2011
	New Rear axle 1m30/2m50	Chap. 02
	241343000	P. 26




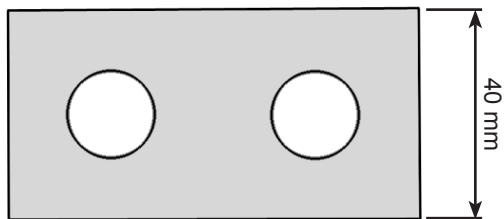
Hellios	Nouveau Pont 1m30/2m70	08.11.2011
	New Rear axle 1m30/2m70	Chap. 02
	241345000	P. 27

Pompe à commande électrique
Electrically driven pump

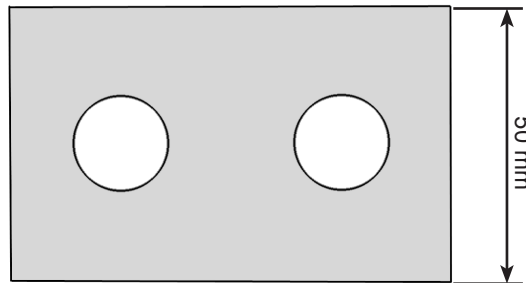
504060013



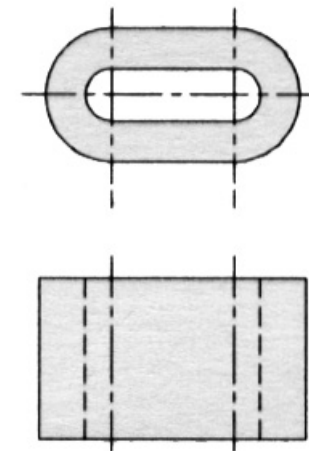
Hellios	Sortie moteur / Engine output	16.09.2009
	230573000	Chap. 02
		P. 28




Cale de 14 mm d'épaisseur
Wedge of 14 mm thick
230 234 006



Cale de 20 mm d'épaisseur
Wedge of 20 mm thick
230 255 000



Cale de 35/53 mm d'épaisseur
Wedge of 35/53 mm thick
230 854 000 (35 mm)
230 593 000 (53 mm)

Hellios	Cales pour voies / Track wedges	16.09.2009
		Chap. 02
		P. 29


25
km/h

Avant Front	Roues		Voies disponibles pour garde au sol 1 m Tracks for 1 m clearance							Pont surélevé, voies 2,25 et 2,40 m 2.25m 2.4m tracks for high clearance		
	Pression	Arrière	Pression									
	Pressure	Rear	Pressure	1,80	2,00	2,15	2,20	2,25	2,40	1,30 m	1,60 m	
12,4 R 36 Alliance	1,6	12,4 R 46 Alliance	3,6								-	-
12,4 R 36 Alliance	1,6	12,4 R 46 Alliance	3,6	Spécial garde au sol 1,30 et 1,60 m							O	O
320/85 R 36 Kléber	1,6	300/95 R 46 Kléber	4,0								O	-
270/95 R 36 Alliance	2,4	270/95 R 48 Alliance	3,6								-	-
270/95 R 36 Kléber	3,6	270/95 R 48 Kléber	4,0								-	-
270/95 R 42 Alliance	2,1	300/95 R 52 Alliance	3,0								O	O
16,9 R 26 Alliance	1,6	16,9 R 38 Alliance	1,9								O	-
16,9 R 26 Alliance	1,6	16,9 R 38 Alliance	1,9	Spécial garde au sol 1,60 m							-	O
16,9 R 34 Alliance	1,6	14,9 R 46 Alliance	2,5			(1)					O	-
420/85 R 34 Michelin	1,6	420/80 R 46 Michelin	2,4			(1)					O	O
13,6 R 36 Alliance	1,6	14,9 R 46 Alliance	2,5							O	-	
340/85 R 36 Kléber	1,6	380/90 R 46 Michelin	2,0							O	O	

(1) Montage des garde-boue impossible
Mud - guard fitting impossible

Monte de ces pneumatiques possible dans les voies correspondantes. OK with the corresponding track.

Monte de ces pneumatiques impossible dans les voies correspondantes. Fitting impossible

Hellios	Pneumatiques 25km/h / 25km/h tyres	16.09.2009
		Chap. 02
		P. 30

40
km/h

	Roues		Voies disponibles pour garde au sol 1 m							
	Avant	Pression	Arrière	Pression	Tracks for 1m clearance					
	Front	Pressure	Rear	Pressure	1,80	2,00	2,15	2,20	2,25	2,40
12,4 R 36 Alliance	1,6	12,4 R 46 Alliance	3,6							
320/85 R 36 Kléber	1,6	300/95 R 46 Kléber	4,0							
270/95 R 42 Alliance	2,1	300/95 R 52 Alliance	3,0							
16,9 R 26 Alliance	1,6	16,9 R 38 Alliance	1,9							
16,9 R 34 Alliance	1,6	14,9 R 46 Alliance	2,5	(1)						
420/85 R 34 Michelin	1,6	420/80 R 46 Michelin	2,4	(1)						
13,6 R 36 Alliance	1,6	14,9 R 46 Alliance	2,5							
340/85 R 36 Kléber	1,6	380/90 R 46 Michelin	2,0							


(1) Montage des garde-boues impossible
Mud - guard fitting impossible



Monte de ces pneumatiques possible dans les voies correspondantes. OK with the corresponding track.




Monte de ces pneumatiques impossible dans les voies correspondantes. Fitting impossible.

Hellios	Pneumatiques 40km/h / 40km/h tyres	16.09.2009
		Chap. 02
		P. 31

	ROUES Wheel	Marque Trade	Type	Indice / load index	Voie mini 25 km/h 25km/h minimum track			Voe mini 40 km/h 40km/h minimum track	Largeur Width (mm)	Diamètre Diameter (mm)	Rayon S/charge Radius (mm)	Circonférence Circumference (mm)	Pression Pressure (Bar)	Jante
					1,00 m	1,30 m	1,60 m	1,00 m						
Avant / Front	12,4 R 36	Alliance	Power Drive R-1	124A8					315	1 450	677	4 369	1,6	W10 W9 (W11)
Arrière / Rear	12,4 R 46	Alliance	Row Crop	148D	1,80 m	-	-	-	315	1 705	797	5 142	3,6	W10 W9 (W11)
Avant / Front	12,4 R 36	Alliance	Power Drive R-1	146A8					315	1 450	677	4 369		W10 W9 (W11)
Arrière / Rear	12,4 R 46	Alliance	Row Crop	148D	-	2,25 m	2,25 m	1,80 m	315	1 705	797	5 142		W10 W9 (W11)
Avant / Front	320/85 R 36	Kléber	Traker	128A8	1,80 m	2,25 m	-	1,80 m	323	1 461	667	4 357	1,6	W11 (W10)
Arrière / Rear	300/95 R 46	Kléber	Super 3	146A8					320	1 741	806	5 308	4,0	W10 (W11)
Avant / Front	270/95 R 36	Alliance	Row Crop	136D	1,80 m	-	-	-	284	1 410	654	4 232	2,4	W9 W8 (W10)
Arrière / Rear	270/95 R 48	Alliance	Row Crop	142D					284	1 710	803	5 171	3,6	W9 W8 (W10)
Avant / Front	270/95 R 36	Kléber	Super 3	137A8	1,80 m	-	-	-	275	1 426	655	4 258	3,6	W8 (W9 W10)
Arrière / Rear	270/95 R 48	Kléber	Super 3	142A8					291	1 730	810	5 255	4,0	W10 (W8 W9)
Avant / Front	16,9 R 26	Alliance	Power Drive R-1	135A8	2,00 m	2,25 m	-	-	429	1 370	624	4 066	1,6	W14L (W15L)
Arrière / Rear	16,9 R 38	Alliance	Power Drive R-1	144A8					429	1 675	772	5 007	1,9	W14L (W15L)
Avant / Front	16,9 R 26	Alliance	Power Drive R-1	135A8	-	-	2,25 m	2,00 m	429	1 370	624	4 066		W14L (W15L)
Arrière / Rear	16,9 R 38	Alliance	Power Drive R-1	161A8					429	1 675	772	5 007		W14L (W15L)
Avant / Front	270/95 R 42	Alliance	Row Crop	139D	2,00 m	2,25 m	2,25 m	2,00 m	284	1 565	728	4 705	2,1	W9 W8 (W10)
Arrière / Rear	300/95 R 52	Alliance	Row Crop	148D					310	1 890	895	5 745	3,0	W9 W8 (W10)
Avant / Front	16,9 R 34	Alliance	Power Drive R-1	139A8	2,15 m	2,25 m	-	2,15 m	429	1 575	722	4 693	1,6	W14L (W15L)
Arrière / Rear	14,9 R 46	Alliance	Power Drive R-1	146A8					378	1 824	841	5 454	2,5	W12 (W13)
Avant / Front	420/85 R 34	Michelin	Agribib	142A8	2,15 m	2,25 m	2,25 m	2,15 m	449	1 580	707	4 690	1,6	DW15L (W14L DW14L W15L)
Arrière / Rear	420/80 R 46	Michelin	Agribib	151A8					410	1 872	861	5 555	2,4	DW13 (DW12)
Avant / Front	13,6 R 36	Alliance	Power Drive R-1	127A8	2,15 m	2,25 m	-	2,15 m	345	1 500	697	4 507	1,6	W11 (W12)
Arrière / Rear	14,9 R 46	Alliance	Power Drive R-1	146A8					378	1 824	841	5 454	2,5	W12 (W13)
Avant / Front	340/85 R 36	Kléber	Traker	132A8	2,15 m	2,25 m	2,25 m	2,15 m	354	1 503	683	4 478	1,6	W12 (W11)
Arrière / Rear	380/90 R 46	Michelin	Agribib Row Crop	157A8					401	1 864	867	5 583	2,0	W13A (W12A DW13A)

- Montage impossible
Impossible fitting

Hellios	Données pneumatiques / Tyres data	16.09.2009
		Chap. 02
		P. 32